

Lodestar

The Friendly Federation ★ Founded to Serve



The Southeast Federation of Mineralogical Societies, Inc.

Volume XXXII/Seven

September 2008

UPCOMING FIELD TRIPS

September 27 (September 28-rain date), 2008: Buck Creek Area of Chunky Gal Mountain, NC; hosted by the Gem and Mineral Society of Franklin, NC. Various minerals, including: corundum (sapphire/ruby), sillimanite, rutile, kyanite, mica, garnet, moonstone, and soapstone.

See your local club newsletter for additional information on the above field trips.

Field trips are open to all members of associated clubs of the DMC program of the SFMS Field Trip Committee and to all members of SFMS member clubs who have provided their membership with SFMS liability insurance. Because of insurance requirements, members of the GENERAL PUBLIC are NOT invited on this or any DMC program field trips.



PRESIDENT'S MESSAGE

The Prez Rambles On . . .

I just recently had a mountain top experience. I found a fabulous place on top of a mountain in near Little Switzerland, NC. And it wasn't even a flat spot. The buildings were built to conform to the mountain, not the other way around. If you don't have a clue, I'm talking about the Wildacres Retreat. We hold two of the four annual Federation workshops here. What a great week. No phone, no computer, fresh air, good food. What more could you ask for? Yes you can bring your computer – they have wireless internet access. Most phones will work – somewhere either on the property or in a nearby town. The staff of the retreat went out of their way to make us welcome and feel at home. Wildlife can be spotted here as well. I watched a squirrel eat a peach while perched on the very highest point of the tree. Wish my balance was that good. I heard rumors that a deer was spotted on one of the decks early one morning. They have several trails that many people hiked each day. I was either too busy or too lazy to try any of them – your choice. Maybe next time I'll make some time to take a walk at least once a day. Hopefully I won't be quite as exhausted going into the work shop in September.

I took the faceting class. Dave Lonser was the instructor for four exceptionally bright students. Dave said he took up faceting to learn patience. Let me tell you, he had plenty of patience with his students. He showed us what to do, gave guidance when needed and bailed us out when we got in trouble. He had to bail me out of problems several times. I finished the week with two beautiful stones. Not perfect by any means but much prettier than most stones you see in a jewelry store. It's amazing how much brighter stones are when they are cut with the proper angles. One is a synthetic stone called Tourmalike. It's actually a piece of a laser rod. My favorite part is that it is a Rubellite Tourmaline color in natural light and a mint green color under fluorescent light. It's 15 mm wide and weighs in at 12.4 carats. My second stone is a man-made citrine quartz. It's a bit smaller at 11.6 mm wide and weighs in at 5.45 carats. I've got a special project in mind for the Citrine that I hope to finish in the PMC class I'm planning to take at the October session at William Holland. That part of the story will be continued later in the year.

Tropical storm Fay brought wind and rain to much of Florida during the week. A large number of instructors and students from Florida were concerned about their homes flooding. People were calling to check on things at home at each break and others were monitoring the storm progress

(Continued on Page 3)

Inside this Issue:

2008 Officers and State Directors	2
Be Safe-Be Well	3
David T. Tuttle, Sr.	4
In Memory of Mary Evelyn Chambliss	4
Proposed Amendments to SFMS Constitution and By-Laws	4
Constitution/By-Laws Committee Solicitation for Additional Recommended Changes	5
SFMS Education Chair/Workshop Report	5
2008 SFMS Workshop Announcement and Application Forms	6
Falls of the Ohio Fall Fossil Festival	9
Words of Caution	9
Graves Mountain Rock Swap and Dig	11
Looking Ahead	12
2007 SFMS Committee Chairmen & Mayo Foundation Officers/Directors	13



THE SOUTHEAST FEDERATION OF MINERALOGICAL SOCIETIES, INC.



A Non-Profit, Non-Commercial, Non-Political Organization and Regional Federation of the American Federation of Mineralogical Societies

PURPOSE:

To bring about a closer association of Clubs and Societies devoted to the study of Earth Sciences and the practice of Lapidary Arts and Crafts in the Southeast part of the United States.

OBJECTIVE:

To cooperate with similar Federations to promote public interest in the Earth Sciences and the conservation of natural resources.

2008 SFMS OFFICERS

President

Steve Henegar
3415 Northboro Court
Murfreesboro, TN 37129-1209
615.896.1472
stevehenegar@bellsouth.net

First Vice President

Betty James
167 Florence Circle
Florence, MS 39703
601.914.6747
mineralid@comcast.net

Second Vice President

Mark Easterbrook
6701 Dorchester Road, Apt. 1007
North Charleston, SC 29418
843.552.1049
asgardsgc@earthlink.net

Secretary

Beryl Ferguson
414 S. Ridgewood Avenue
Ormond Beach, FL 32174
386.589.3583
crossbowcreations@yahoo.com

Membership Secretary

Ray Behr
200 Mica Circle
Franklin, NC 28734
828.349.0827
raybehr@touchnc.net

Treasurer

Ed Harris
12520 Jeff Hamilton Road
Mobile AL 36695
251.865.9157
edharrisir@mchsi.com

Assistant Treasurer

Roger Campbell
131 Double Falls Road
Pisgah Forest, NC 28768
828.877.4073 or 828.384.8561
campbere@citcom.net

Editor

Carolyn L. Daniels
3660 Prince Way
Tucker, GA 30084-8317
770.723.1359
dpdaniels@mindspring.com

Immediate Past President

Buddy Shotts
P.O. Box 427
Lucedale, MS 39452-9780
601.947.7245
buddys@datasync.com

AFMS 4th Vice President

Don Monroe
350 Lapidary Lane
Young Harris, GA 30582
706.379.9662
donmonroe@att.net

President: Mayo Education

Foundation
William (Bill) G. Waggener
1909 Moores Mill Road
Atlanta, GA 30318-1309
404.355.7377
wqwaggenerii@bellsouth.net



2008 SFMS STATE DIRECTORS

Alabama

Iris McGehee
2433 Upper Wetumpka Road
Montgomery, AL 36107
334.262.7275
irisjmcg@aol.com

Florida

Hugh Sheffield
2440 Southshore Drive, SE
St. Petersburg, FL 33705
727.894.2440
husheffie@aol.com



Georgia

Anita Westlake
1253 Spencer Avenue
East Point, GA 30344
404.761.7849
libawc@emory.edu

Kentucky

David Horn
1702 Applewood Lane
Louisville, KY 40222
501.426.4457
crystalman@earthlink.net

Louisiana

Dr. Bridget Joubert
P.O. Box 5402
Alexandria, LA 71307
318.443.5184
jemarler@aol.com

Mississippi

Floy and Bill Hawkins
P.O. Box 7312
Tupelo, MS 38802
662.844.7441

North Carolina

Mike Streeter
7 English Place
Candler, NC 28715
828.667.8290
mcstreeter@charter.net

South Carolina

Fred Sias
120 Holly Avenue
Clemson, SC 29631
864.540.6833
fredsias@gmail.com

Tennessee

Marty Hart
4935 Olivia Drive
Antioch, TN 37013
615.331.3570
webmaster@gemizo.com

Virginia

Steve Gordon
213 Sugar Mill Drive
Amherst, VA 24521
434.929.1524
ssdtgordan@aol.com

**The article submittal due date for the October 2008 *Lodestar* is September 25, 2008.
(No exceptions!)**

PRESIDENT'S MESSAGE

The Prez Rambles On . . .

(Continued from Page 1)

whose phone service didn't work could call home. One couple had to leave early in the week due to damage to their home. I think one other person left later in the week for the same reason. I hope their damage was minimal and they are able to make repairs and get back to normal as soon as possible. For the rest that stayed the entire week, my hat's off to your for you dedication. I hope all of you returned home safely and didn't find much damage. Wind can do strange and amazing things. Let's hope this hurricane season passes quickly. As of this writing hurricane Gustav has plowed ashore, hurricane/tropical storm Hanna is raging thru the eastern Caribbean, and tropical storm Ike is heading east as well. For those of you in the way of these storms, I pray that you are safe.



As president this year, I've made our workshops a priority. In fact I plan to attend all four workshops. People seem to be glad that I'm attending them. Two are complete, two more just waiting for us to arrive. I'm certainly enjoying attending and meeting a lot of people, some whose names I recognize from reading newsletters when I was newsletter editor of my local club. I have a new appreciation of the effort our workshop directors, registrars, education chair put forth to make the workshops happen. I also appreciate the instructors who give their time to teach. I have a whole new appreciation and recognize the value that our workshops represent. Both locations for the workshops are in the mountains where the air is clear and clean. Won't you come join us? Learn a new skill or increase your skills in an area you are already proficient in. How about volunteering to teach? I can almost assure you you'll enjoy it.

I'm still working on arrangements for the annual meeting. It will be held in Nashville on December 13. I will get the information out to everyone as soon as I can lock it down.

Enough rambling, see you next month or maybe at Wildacres in a couple of weeks.



Be Safe – Be Well

Safety Committee – Don Monroe, Chairman

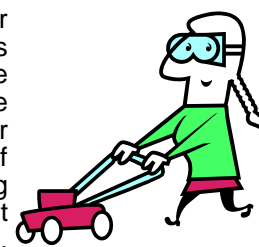
Mow, Mow – Mow Once More

We are now beginning my favorite time of the year – Fall. Most everyone likes the fall for many different reasons. There is football and other sports. It signals the approach of the hunting season, maybe fishing in your area and lots of other fun things.

For many of us it is the time for the last mowing of the yard for the year. I, for one, am tired of the yard and all that goes with it. Now we have leaves falling and some really tough weeds and we must focus on the fact that the

appearance of the yard when we finally finish our work will be the appearance that we must live with until next spring. By now you are asking what does this have to do with safety. Some experts state that the last mowing of the year is the most hazardous. To support this theory, think about the following situations.

1. We have been using our lawn equipment for several months and it probably needs maintenance. My rotary mower is now terminally dull and requires much exertion to get through the really tough grass which is hard on my back and knees. (O.K. I know I am a senior citizen and need to back off this stuff but getting help here in the mountains is "mission impossible")
2. At this time of the year much debris has found its way into the yard and some of it can become a missile when propelled by your mower. A college friend of my vintage was mowing and struck a coat hanger which, in turn, penetrated his groin causing pain, anguish, and injury. He lived but it was a long recovery. In our yard we have black walnuts and hickory nuts which make dandy little weapons. Now, more than ever, wear your safety glasses.
3. We have briars, crabapple bushes and other stickers that will draw blood. In addition, thorns can really create a nasty infection.
4. Depending where you live you may be disposing of brush and weeds by burning or by mulching. I use a "chopper" which brings a whole category of opportunities for injury. Mine is a large one and it would love to get your arm into its mouth. The noise level is deafening and the chips it spits out will bite you. I will not even talk about burning.



We do some of it and if you have reached adulthood without a working knowledge of the dangers of fire, I really do not want to live near you. If you need a short course in fire complete with "war stories" you must meet my brother. During his years of service with the DNR (Department of Natural Resources) he was involved in several projects involving controlled burning. When "controlled" is not part of the exercise, the results are very impressive.



There is much more that could be said but I think you are getting the drift. If you need additional instruction, run your mower over a yellow jackets' nest and they will at least teach you how to run.

PROPOSED AMENDMENTS TO SFMS CONSTITUTION AND BY-LAWS



David T. Tuttle, Sr.

David T. Tuttle, Sr. of the Jacksonville Gem and Mineral Society, Jacksonville, FL passed away August 22nd. David served as president of The Southeast Federation in 1994 and remained

active in various positions, he and Barbara served as directors of the Wildacres workshops and on the Mayo Education Foundation Board of Directors. He taught soap stone carving at both workshops, and has been an avid supporter of the workshops for many years.

David was a serious Rockhound in every aspect of the hobby, Minerals and Mineralogy, Carving, Cabbing, and an expert in Faceting, perhaps he was best know for his faceting of depression glass. He has exhibited his collections of faceted depression glass in the SFMS and other shows through out the Federation. His exhibits included the faceted stone as well as the material it was cut from, telephone wire insulators, water pitchers, wine glasses, etc, etc.

He was a member of the Jacksonville Club for more then 25 years, serving as president on more than one occasion. He was Bulletin Editor for several years and served in many other club positions. He remained active in the club activities until just days before his death.

David will surely be missed by his many friends in the Southeast Federation and especially the Jacksonville Gem and Mineral Society.

*Jim Robinson
(Photograph provided by Mickey Cecil)*

**In Memory of Mary Evelyn Chambliss
October 10, 1948 - July 5, 2008**

Mary's involvement with the Jacksonville Gem and Mineral Society was "multifaceted". She attended field trips and meetings, worked the fairs, outfitted the picnics, exhibited her collection of rocks and minerals and gifted many of her pearls and treasures. Her official duties over the years included being field trip co-chair with Charlie Broome, angel program chair, JGMS treasurer, and JGMS president. For the past 8 years, Mary chaired the annual club show committee while battling her cancer and was always present at her show "desk". She will be deeply missed as a dedicated member, enthusiastic rockhound, and loyal friend.

Mickey Cecil

The following amendments to the Constitution and By-laws of the Southeast Federation of Mineralogical Societies are proposed by the Executive Board:

PROPOSED AMENDMENT TO THE CONSTITUTION AND BY-LAWS OF THE SOUTHEAST FEDERATION OF MINERALOGICAL SOCIETIES

ARTICLE VII, Section 2. EXECUTIVE BOARD: At least two semi-annual meetings of the Executive Board of the Federation shall be held each year as prescribed in the By-Laws. Other meetings may be held as necessary to perform the work of the Federation.

Change: Delete the words "two semi-annual meetings" on line one and change to read:

ARTICLE VII, Section 2. EXECUTIVE BOARD: At least one meeting of the Executive Board of the Federation shall be held each year as prescribed by the By-Laws. Other meetings may be held as necessary to perform the work of the Federation.

Reason for Change: Due to the increased cost of gasoline and the distance which must be traveled by some Executive Board members, this decreases the number of required meetings to one. It retains the next line permitting called meetings as needed to perform necessary work of the Federation.

*NOTE: This change does not affect Article VII, Section 1., of the Constitution governing the Annual meeting.

PRPOSED AMENDMENT TO THE BY-LAWS OF THE SOUTHEAST FEDERATION OF MINERALOGICAL SOCIETIES

ARTICLE V, BOARDS, Section 2.D. MEETINGS: The Executive Board shall hold at least two (2) semi-annual meetings each year. All meetings shall be held at the call of the President.

Change: Delete the words "at least two (2) semi-annual meetings" and change to read:

ARTICLE V, BOARDS, Section 2.D. MEETINGS: The Executive Board shall hold at least one meeting each year. This meeting shall be held at the call of the President.

Reason for Change: Change to correspond with proposed change of the Constitution and to reduce the number of required meetings to one. Other meetings may be called by the president as provided by the Constitution in ARTICLE VII, Section 2. quoted above.

*NOTE: This proposed change does not affect Article VI of the By-Laws governing the annual meeting.

(Continued Next Page)

PROPOSED AMENDMENTS TO SFMS CONSTITUTION AND BY-LAWS

(Continued from Previous Page)

The following amendments to the Constitution and By-Laws of the Southeast Federation of Mineralogical Societies are proposed by the Mississippi Gem & Mineral Society, a member Society in good standing.

PROPOSED AMENDMENT TO THE CONSTITUTION OF THE SOUTHEAST FEDERATION OF MINERALOGICAL SOCIETIES

ARTICLE IV, MEMBERSHIP, Section 1. MEMBERSHIP. Retain as is.

Add: Section 2, NON-DISCRIMINATION: The Federation does not discriminate against anyone on the grounds of race, creed, religion, sex., sexual orientation, or any other cause whatsoever, providing, however, that all other requirements for membership are met.

Reason for change: This change is required by our insurance carrier. It also meets current government standards for non-discrimination set for 501-c-3 corporations.

PROPOSED AMENDMENT TO THE BY-LAWS OF THE SOUTHEAST FEDERATION OF MINERALOGICAL SOCIETIES

ARTICLE I, MEMBERSHIP

Following Section 2., C. Add the following:

D. The Federation does not discriminate against anyone on the grounds of race, creed, religion, sex, sexual orientation, or any other cause whatsoever, providing, however, that all other requirements for membership are met.

Reason for change: This change is needed to correspond with change in By-Laws.

.....

CONSTITUTION/BY-LAWS COMMITTEE SOLICITATION FOR ADDITIONAL RECOMMENDED CHANGES

I was recently appointed the Constitution/By-Laws Chairman by the SFMS President. In accordance with the By-Laws, I am soliciting recommended changes to the Constitution/By-Laws. The last change was number 19, 2005. Because of the requirements stated in the By-Laws for making changes, I must receive your request by the end of September.

If you send me a request and don't receive an

acknowledgement, keep trying to contact me until you know that I have received your request. Time is short and we must work fast.

Roger Campbell
131 Double Falls Rd
Pisgah Forest, NC 28768
campbere@citcom.net
828.877.4073 or 828.384.8561 (cell)

SFMS EDUCATION CHAIR/WORKSHOP REPORT

Good news - for most of us anyway. We had so many folks sign up for the August session that we ran out of rooms to put them in! As of this writing, we have several would-be attendees on standby, waiting to see if we get cancellations (or maybe a few more rooms). This underscores the need to register early. A lot of these folks registered in the month before the workshop start date, and I'm afraid some will have to be disappointed.

However, September is just around the corner (actually it is here), and it's a beautiful time to be up there in the mountains. The time is NOW to send in your registration for the September session. And if you are registered but haven't sent in your full payment, please do so now. Registrations need to be paid in full 30 days before the workshop start date. Only those paid in full can be placed on standby. A final note on the September session: The casting-finishing class has been canceled - no takers.

The October session at William Holland is also filling up. If you were disappointed to miss out on Vivian's beading class and Ken's digital photography class at Wildacres in August, both classes are being offered in October. Also, there are three - count 'em - three silver classes in October. Since silver appears to be the most popular class we offer, we have been trying to schedule more classes. They do fill up quickly.

Correction: In my July column, I made reference to the auction income at the June session. I didn't catch my error until after press time. The correct auction income in June was in excess of one thousand dollars, not two thousand.

A personal note: I've been involved with glass work, stained glass and fused glass, since about 1985. Since I was a tad nervous about working with an open flame, my glass work ended at the kiln. With some trepidation, I signed up for Cindy Reed's beginning lampwork class at the June session, and fell in love with glass all over again. Cindy is a new instructor for us this year, and she is wonderful. Before the week was out, I had ordered the equipment and it was waiting for me when I got home. My guest room is now a torch room, and I am hoping Cindy will continue to teach for the federation for years to come. Plus, they had great things at the auction and at tailgating! Husband Jim is a rockhound extraordinaire and was happy to share his finds with us.

A final note on the September session: The casting-finishing class has been canceled - no takers.

*I hope to see many of you this fall,
Julia Larson, SFMS Education Chair*

2008 WORKSHOP INFORMATION

One of the unique facets of the Southeast Federation of Mineralogical Societies is the **Workshop Program**, which offers members the opportunity to gather for week-long, hands-on seminars taught by experienced instructors. Whether you are a newcomer to the lapidary arts and want to learn the basics, or whether you're an old hand who wants to learn something new or move on to the next level, the Workshop Program has something for you. We look forward to seeing you in 2008. Julia Larson, SFMS Education Chair

2008 WORKSHOP DATES

William Holland	June 8-14
Wildacres	August 18-24
Wildacres	September 15-21
William Holland	October 12-18

William Holland School of Lapidary Arts (www.lapidary.com) is located in the mountains of north Georgia near the North Carolina border.

Wildacres Retreat (www.wildacres.org) is a privately owned conference center nestled in the North Carolina mountains near Little Switzerland. Please visit these websites for additional information.

Who May Attend

Anyone belonging to an SFMS club will be given priority. Student under 18 are welcome, but must be accompanied by a responsible adult and must have approval from the workshop director and the instructor to attend an adult class. Members of other AFMS regional federations may attend on a space available basis. Anyone not affiliated with AFMS may attend by paying an additional fee of \$50. First-time workshop attendees and those taking a class for the first time will receive priority.

REGISTRATION PROCEDURES

Applications from members of SFMS clubs will be accepted beginning February 1, 2008. Applications from other regional federations and the public at large will be accepted beginning April 1, 2008. Your club membership dues must be current and your club's dues to the Federation must also be paid before you will be accepted as an SFMS member.

A non-refundable administrative deposit of \$25 per person must accompany the application. The full amount may be remitted at that time. The balance is due four weeks before the workshop start date. No reminders will be sent. If you have not received written confirmation of your application within 30 days, please contact the registrar or education chair.

Refunds are at the discretion of the Education Chair and the workshop director; however no refunds will be made once the workshop has started. There is no adjustment for late arrival or early departure. No fee will be charged if a class is cancelled.

The **application form** is on the next page, along with the course offerings. Please read it carefully. **Note that some classes are marked with an asterisk (*), meaning they are Intermediate or Advanced, and therefore have prerequisites.** Please do not sign up for these classes unless you

have the required experience. Contact the instructor for more information on these classes.

About instructors

All instructors for our workshop program are volunteers. They may charge a materials fee for their classes, but are not otherwise compensated for their time and effort. For additional **information about our instructors**, please visit www.amfed.org/sfms.

WORKSHOP STAFF

WM HOLLAND DIRECTOR: Pat Davis
4642 23rd Ave. N.
St. Petersburg FL 33713
whdirector@yahoo.com

WILDACRES DIRECTOR: Dan Griffin
1320 Bird Cir.
Kingston TN 37763
865-406-8802
wildacresdirector@yahoo.com

REGISTRARS

WILDACRES Mrs. B. J. Gearhart
P. O. Box 36
Lebanon GA 30146-9998
770-479-0963
waregistrar0809@yahoo.com

WM HOLLAND Denise Talbott
216 Springview St.
Murphy NC 28906
828-494-7213
whregistrar@yahoo.com

NOTE:

Check-in at Wildacres is
MONDAY afternoon.

Check it at William Holland is
SUNDAY afternoon.
Early check-in is not permitted at either
location.

2008 SFMS WORKSHOP REGISTRATION FORM

SESSION: ◇ 1 William Holland June 8-14 (check one) ◇ 2 Wildacres August 18-24	◇ 3 Wildacres September 15-21 ◇ 4 William Holland October 12-18
ACCOMMODATIONS: ◇ Lodge ◇ Day Student ◇ Campground (Wm Holland only)	

1 NAME _____ SFMS CLUB _____
 Address _____
 City _____ ST__ ZIP _____ Email _____
 Home Phone (____) _____ Cell Phone (____) _____
 Have you attended any other SFMS workshops? _____
 Do you want to be placed on standby if your class is filled when we get your application? Y N

Spouse NAME _____ SFMS CLUB _____
 (#2) Address _____
 City _____ ST__ ZIP _____ Email _____
 Home Phone (____) _____ Cell Phone (____) _____
 Have you attended any other SFMS workshops? _____
 Do you want to be placed on standby if your class is filled when we get your application? Y N

Single applicants only: Do you have someone you want to share a room with? If yes, whom? _____ Are you a smoker?? Y N Do you want a non-smoking roommate? Y N No preference ____ Are you an early riser? _____ or a night owl? _____

Special needs: Do you need a handicap room? Y N Can you negotiate stairs? Y N (elevator at Wm Holland only) Dietary: Diabetic _____ Other _____ Campers: Type _____ Length _____ (40 ft. max.)

Class Selection

**** Please list alternates****

	First Choice	1 st time taking class?	Second Choice	Third Choice
Student #1		Y N		Y N
Spouse #2		Y N		Y N

Cost per person \$310.00 double occupancy
Single room with private bath \$470
*****Non members add \$50.00 to all fees*****
Day Student or camper workshop fee \$140 per person. Campsite fee (Wm Holland only) \$120 per week. No meals are included for day students or campers. They are available from and payable directly to the facility. **A \$25 non-refundable deposit per person must accompany your application.** You may, and are encouraged to pay the full amount at that time.

Cancellation Policy: There is a non-refundable \$25 administration fee. Other refunds are at the discretion of the director and Education Chair.

MAKE CHECKS PAYABLE TO SFMS William Holland Workshop Denise Talbott, William Holland Registrar 216 Springview St Murphy NC 28906 ----- --- OR --- SFMS Wildacres Workshop Mrs. B.J. Gearhart, Wildacres Registrar P.O. Box 36 Lebanon GA 30146-9998

FOR REGISTRAR'S USE ONLY

Postmark Date	Check #
Deposit #	Amt Paid \$
Accept Mailed	Bal due \$
Standby mailed	Bal check #
Cancel Date	Total Paid
- cancel fee \$	Refund \$
Refund check #	Refund mailed

(Continued Next Page)

2008 SFMS WORKSHOP CLASS SCHEDULE

Workshop Staff

William Holland Director, Pat Davis
4642 23rd Ave. N.
St Petersburg Fl 33713
727-323-2147
Email: whdirector@yahoo.com

Wildacres Director, Dan Griffin
1320 Bird Cir
Kingston TN 37763
Phone: 865-406-8802
Email: wildacresdirector@yahoo.com

Wildacres Registrar Mrs. B. J. Gearhart
P. O. Box 36
Lebanon GA 30146-9998
Phone 770-479-0963
Email: waregistrar0809@yahoo.com

William Holland Registrar Denise Talbott
216 Springview St
Murphy NC 28906
Phone 828-494-7213
Email whregistrar@yahoo.com

Education Chair
Acting Director Wildacres
Julia Larson
5297 Huntington St NE
St Petersburg FL 33703
Phone 727-522-1254
Email sfmsedchair@gmail.com

Classes with asterisk (*) have prerequisites. Check with instructor before registering.

SESSION ONE - WILLIAM HOLLAND SUNDAY, June 8-14, 2008

Basic of Stringing	CANCELED
Cabochons, beginning	Jerry Mason
Chainmaking, beg.	CANCELED
Enameling	Renee Wright
Glass fusing	CANCELED
Lampwork, beginning	Cindy Reed
Opal cutting	Sara Lee Boyce
Scrimshaw techniques	CANCELED
Silver, beginning #1	Dan Haga
Silver, beginning #2	Allen Jewell
Wire sculpture*	Diane Mason
Wirecraft, Beginning	Danny Griffin

SESSION TWO - WILDACRES MONDAY, August 18-24, 2008

Cabochons	Betty James
Faceting, beg	David Lonser
Cold Connection	Kim St Jean
Chains, Beg. & Adv.	Roy Deere
Gem Ident/Appreciation	Ben Smith
Metalsmithing, Advanced*	Jeff Sheer
Digital Photography	Ken Kipnis
PMC 1	Ken, Mary Ann Devos
Raku Beads, Pendants	Jim Cullen
Seed Bead Techniques	Vivian Heath
Silver, beginning	Nancy English
Wire, beginning	Rowan Rose

SESSION THREE - WILDACRES MONDAY, September 15-21

Cold Connections	Kim St Jean
Enameling	CANCELED
Chains, adv* & beg	Roy Deere
Facet/Intarsia, beg	Tom Wilkie
Casting Finishing*	CANCELED
Opal Cutting	Sara Lee Boyce
PMC 2	Ken, Mary Ann Devos
Seed bead tech.	Roz Evans
Silver, beginning	Zane Purcell
Stained glass, beg.	Julia Larson
Wire Weaving*	Louise Coulson
Wire, knotting/braiding*	Don Coulson

SESSION FOUR - WILLIAM HOLLAND SUNDAY, October 12-18

Cabochons	Anita Westlake
Chainmaking, Inter.*	Bill & Dee Conybear
Cold Connection	Kim St Jean
Faceting Two	David Corn
Fused Glass	Addy DiPietro
Gourd Carving	CANCELED
Opal cutting	Joe DiPietro
Lost Wax Casting	John Iacullo
Digital Photography	Ken Kipnis
PMC (Non-Cert)	Pam Hall
Scrimshaw	Gino Deskins/Betty Porter
Seed Beading	Vivian Heath
Silver, beginning #1	Don & Ann Monroe
Silver, beginning #2	Dan Haga
Silver, intermediate*	Allen Jewell
Beginning Wire	Janet Corn

FALLS OF THE OHIO FALL FOSSIL FESTIVAL

The Falls of the Ohio State Park's 14th "Falls Fossil Festival" will be held September 20 (9 a.m. - 6 p.m.) and 21 (10 A.M. - 5 P.M.), 2008. This event, sponsored by the Falls of the Ohio Foundation, will feature:

- * Daily non-technical programs and workshops for hobbyists, educators and the curious on fossils, minerals, and collecting.
- * Almost 20 vendors selling fossils, minerals, educational material, crafts and food.
- * *Children's Activity Area* with a variety of activities scheduled.
- * *Resource Tent* where you can get fossils and rocks identified by members of the Indiana Society for Paleontology, the Kentucky Paleontological Society and the Kyana Geological Society. Learn about other geological sites with material from many other fossil parks in North America, as well as information and free literature from the Indiana and Kentucky Geological Surveys.
- * Fossil and mineral identification (Bring in your mystery rocks!).
- * Hikes on the fossil beds, including extended hikes on the outer fossil beds.
- * Collecting Silurian and Devonian fossils from special rock piles donated and staffed by Hanson Aggregates and mineral piles from the dumps of Cave in Rock fluorite mines.
- * Exhibit – "*Rocks, Minerals and Life!*" in our Interpretive Center explores the value of earth materials in our daily lives.

Proceeds benefit the educational programs at the Falls of the Ohio State Park which reach more than ten thousand students each year!

A web site with a detailed schedule for the Festival is posted on our web site at: <http://www.fallsoftheohio.org>
For more information contact Alan Goldstein at: 812.280.9970 ext. 403.

*Alan Goldstein, Certified Interpretive Planner
Interpretive Naturalist
Falls of the Ohio State Park
201 West Riverside Dr.
Clarksville, IN 47129-3148
www.fallsoftheohio.org*

WORDS OF CAUTION

by

John M. Wright, RPG

AFMS Conservation & Legislation Chairman

HR 554 Resurrected Again!

The Paleontological Resources Preservation Act, HR554, has once again this year been resurrected, reviewed, and approved by the Agriculture Committee. It is now currently under review by the House Judiciary Committee and expected to clear that committee by July 18, 2008. This bill is on a "fast track" for passage and will most likely be voted on by the House of Representatives shortly after their return from summer recess which means September or October unless there is some unforeseen delay. I fully expect it to be quickly passed by voice vote, or quietly tacked onto some other major piece of legislation. It appears that a compromise has also been reached for Senate approval. While you may not agree with my assessment of this bill, it is important that we let all our members know that it is back on the table so to speak and hopefully they will take appropriate action

I want to emphatically remind you again, this is a dangerous piece of legislation that is going to hurt a lot of innocent people. The bill is so vague and open to interpretation that you can be arrested, have your vehicle impounded, and be tried for driving on a federal highway with a small rock wedged in the tread of your tires. As I said before, there is no requirement for the arresting officer to be knowledgeable regarding fossils or rocks, the burden of proof is your problem. I wonder what happened to innocent until proven guilty. Does the gravel in your driveway contain fossils? Your neighbor can turn you in for a nice reward. Secret "**Area 51**" type sites for paleontologist; sounds ridiculous, but unfortunately this bill authorizes it.

Who is going to benefit from this bill? A few inconsiderate paranoid college professors and museum curators that seriously lack the competence to compete in a free market society. Actually, this group is really all about money in the form of job security, grants, books, articles, TV specials, and speaking fees. The fact that more than 90% of the major fossil discoveries are made by amateurs causes symptoms suffered by these "professionals" very similar to a severe case of hemorrhoids.

"We the people" according to the Constitution own the federal lands and support them with our tax dollars, so why should a small special interest group be given exclusive rights to our lands? The justification used by paleontologist is to preserve rare fossils for future generations, but aren't these the same scholars that warn us that the catastrophic circumstances that led to the demise of the dinosaurs and

(Continued on Next Page)

September 2008

The Southeast Federation of Mineralogical Societies, Inc.

WORDS OF CAUTION*(Continued from Previous Page)*

many other species in the past is going to happen again. They say **"it's not a matter of if, but when,"** so according to their own philosophy the prospects for any future generations are not very good.

They say that rockhounds (informed amateurs in their vernacular) destroy sites and remove critical evidence needed by the scientific community. Well, I recently spent several weeks reviewing paleontological articles and publications plus numerous other well known scientific publications covering a span of about 50 years and while I'm sure there must be many references to cleaning up excavation sites, I did not find any. However, I easily found "hundreds" of articles and references about leaving a site **"as good as or better than found"** in the American Federation of Mineralogical Societies' monthly Newsletters, the seven area Federations of Mineralogical Societies' monthly newsletters, and the numerous local Gem & Mineral Societies' monthly bulletins. It sure seems to me like rockhounds (whoops – informed amateurs) are a little more concerned about conservation and protecting the environment than the scientific community.

Once the scholars and curators acquire "our" fossils from "our" lands, they will be tucked away in storage areas at universities supported by "our" tax dollars, to be studied by students who we as parents "pay" tuitions for, and taught by professors whose salaries are paid by "our" dollars and tuition fees. The museums built with "our" tax dollars and "our" donations will have experts whose salaries are paid by "our" taxes and donations prepare the fossils "owned by us" for display so "we the public" can see them for a "fee." Talk about a stacked deck!

A lot of politicians have benefited by riding on the environmental bandwagon, but with the price of gasoline skyrocketing, travel, food, utilities, building materials, and almost everything else going up astronomically, being "Green" is becoming more of a political liability than an asset. Someday, they may even come to the realization that people who spend their lives studying petrified bones and dinosaur poop don't add a lot to the economy.

Another important product of this legislation will be to further enhance the black-market trade. It's already a lucrative business and this bill will just increase the price of American fossils overseas. With people, merchandise, and tons of narcotics being smuggled freely across our porous borders, moving fossils out of the country shouldn't pose much of a problem.

It is ironic, but we spend billions of dollars helping other nations gain independence, become democracies, and their people enjoy the benefits of freedom. Unfortunately, the same politicians that appropriate our tax dollars for this noble purpose turn right around and help implement policies to accommodate special interest groups that place far more restrictions on our freedoms here at home.

Time is short to stop or change HR 554. About the only alternative we have left at this stage is to call our representatives and tell them how we feel about this bill. I

know that many of you are leery when it comes to talking directly with dignitaries and that it may be difficult for you to contact your Representatives or Senators to talk with them in person. Most of the members of congress maintain offices in their districts and the staff members working for them at these offices are local people. If you call and talk with a member their staff, you will normally find them to be very friendly, courteous and easy to talk with because they want your vote and support. Most importantly, they pass information received from constituents on to their boss. If they get several calls, a red flag, so to speak, goes up indicating areas of importance. Often this is a better way to get the attention of your Representative as he or she wants and needs every vote to stay in office. Constituents usually are more influential than anyone else when dealing with legislators.

I might add a note of interest at this point: our club sends a courtesy copy of our monthly bulletin (which includes my AFMS & SFMS articles) to both our U.S. Senators and our Representative. We have been told that it is well received and appreciated by them.

I am also including a list of the Agriculture Committee members provided by Carolyn Weinberger, Editor of the AFMS Newsletter. It would really help if you called or faxed them, particularly if you live in their congressional district.

Agriculture Committee Members:

Collin C. Peterson, MN, Chairman
 Tim Holden, PA, Vice Chairman
 Mike McIntyre, NC
 Bob Etheridge, NC
 Leonard L. Boswell, IA
 Joe Baca, CA
 Dennis A. Cardoza, CA
 David Scott, GA
 Jim Marshall, GA
 Stephanie Herseth Sandlin, SD
 Henry Cuellar, TX
 Jim Costa, CA
 John T. Salazar, CO
 Brad Ellsworth, IN
 Nancy E. Boyda, KS
 Zachary T. Space, OH
 Timothy J. Walz, MN
 Kirsten E. Gillibrand, NY
 Steve Kagen, WI
 Earl Pomeroy, ND
 Lincoln Davis, TN
 John Barrow, GA
 Nick Lampson, TX
 Joe Donnelly, IN
 Tim Mahoney, FL

Republican Minority:

Bob Goodlatte, VA, Ranking Minority Member
 Terry Everett, AL
 Frank D. Lucas, OK
 Jerry Moran, KS
 Robin Hayes, NC
 Timothy V. Johnson, IL

(Continued on Next Page)

WORDS OF CAUTION
(Continued from Previous Page)

- Sam Graves, MO
- Mike Rogers, AL
- Steve King, IA
- Marilyn N. Musgrave, CO
- Randy Neugebauer, TX
- Charles W. Boustany, Jr., LA
- John R. "Randy" Kuhl, NY
- Virginia Foxx, NC
- K. Michael Conaway, TX
- Jeff Fortenberry, NE
- Jean Schmidt, OH
- Adrian Smith, NE
- Tim Walberg, MI
- Robert E. Latta, OH

Mark your calendar and tell all your friends about this great event!

**THIS DIG IS OPEN TO ALL.
NO NEED TO SIGN-UP,
JUST SHOW UP!**

Contact Information: Clarence Norman Jr. - 706.359.3862 (his business) or 706.359.2381 (his home).

.....

GRAVES MOUNTAIN CODE OF CONDUCT!

- **Park your vehicle in the designated area (s) only.**
- **NO child under the age of 12 years old is to be alloed on the mountain because of the dangers involved.**
- **ALL pets must be kept under control and on a leash.**
- **The field trip leaders have final and absolute say as to where you may safely work.**
- **Ladders or power tools of any kind will not be allowed. (HAND TOOLS ONLY!)**
- **STAY AWAY FROM ALL HIGH WALLS!!**
- **NO RAPELLING OFF OF ANYTHING!**
- **NO ONE IS ALLOWED TO DRIVE THEIR VEHICLE ON ANY PART OF GRAVES MOUNTAIN BEYOND THE PARKING AREA! (The caretaker must accompany anyone driving beyond the parking area!)**
- **EVERYONE NEEDS TO BE OFF THE MOUNTAIN BY DUSK. (Absolutely no one is allowed on Graves Mountain after dark.)**

.....
GRAVES MOUNTAIN "ROCK SWAP AND DIG"

8:00 A.M. to 6:00 P.M., Friday, October 3, 2008
8:00 A.M. to 6:00 P.M., Saturday, October 4, 2008
8:00 A.M. to 6:00 P.M., Sunday, October 5, 2008

Your society is invited to field collect minerals at Georgia's premiere mineral location!

The caretaker in charge of Graves Mountain, Clarence Norman Jr., has announced plans to hold a three day dig and rock swaps on the Mountain during October 3, 4, & 5 2008. He will have the mountain open to collecting from 8 am to 6 pm each day. All participants must stop at the welcome table in the Hospitality tent to sign a liability release form and make a small contribution to defray the cost of opening the mountain and providing port-o-lets. (Please consider what it is worth for you to be able to field collect at Georgia's premiere mineral location!) There will be several golf cart type, four wheeled vehicles available to transport those participants who have trouble walking long distances. The dig will cease and everyone is expected to be off the mountain by around 6 pm each day. Participants will be allowed to park in a designated area on the mountain.

Rock Swap and Hot Food/Drinks: Junior will set aside an area in the upper parking lot for tables to be setup for daily rock swaps. Anyone who would like to setup a table, please contact Junior at the phone numbers listed below. Hot food cooked on the grill, cold drinks and chips will be available for purchase on the mountain during all three days of these events. Don't forget to bring some extra money to buy that special "Graves Mountain Rock Swap and Dig" T-shirt!

Please protect our ability to field collect at Graves Mountain!

Report Violations to:

Clarence Norman Jr.
706.359.3862 (his business) or 706.359.2381 (his home)
All reported violations will be held in strict confidence.

September 2008

The Southeast Federation of Mineralogical Societies, Inc.

LOOKING AHEAD**CLUB & SOCIETY SHOWS/SWAPS**

(Check with show contact for admission charges, if any)

DATE CORRECTION: September 19-21, 2008, Jacksonville, FL-Jacksonville Gem & Mineral Society. 20th Annual Gem, Mineral, Fossil, and Bead Show., Morocco Temple, 3800 St. Johns Bluff Road South. Hours: 26th, 1:00 P.M.-6:00 P.M.; 27th & 28th, 10:00 A.M.-6:00 P.M. Contact: Tom Frame at jgms_show@hotmail.com or 904.400.3818.

September 27-28, 2008, Lexington, KY - Rockhounds of Central Kentucky. 18th Annual Show. Kentucky National Guard Armory, Airport Road. Hours: 27th, 10:00 A.M. - 6:00 P.M.; 28th, 12:00 Noon to 5:00 P.M. Contact: Kay Fisher at 859.537.1776 or kkay19@aol.com.

CANCELLATION: September 27-28, 2008, Hiddenite, NC - Western Piedmont Mineral & Gem Society. CANCELED DUE TO ROAD CLOSURE.

October 16-18, 2008, Franklin, NC- Gem & Mineral Society of Franklin, NC. Leaflookers Gemboree. Macon County Community Facilities Building, U.S. 441 South. Hours: 16th-17th, 10:00 A.M. - 6:00 P.M.; 18th, 12:00 Noon- 5:00 P.M. Contacts: Fredplesner at 828.349.4224 or willa@dnet.net or Linda Harbuck at 800.336.7829 or lindah@franklin-chamber.com.

November 7-9, 2008, Pascagoula, MS - Mississippi Gulf Coast Gem & Mineral Society. Magnolia State Gem, Mineral and Jewelry Show. Civic Center Building, Jackson County Fairgrounds, Pascagoula, MS. Hours: 7th & 8th, 10:00 A.M. - 6:00 P.M.; 9th, 10:00 A.M. - 5:00 P.M.. Contact: John Wright, 3304 Nottingham Rd., Ocean Springs, MS 39564, 228.875.9192, or osjpw@datasync.com.

November 7-9, Tulsa, OK - Rocky Mountain Federation/Tulsa Rock and Mineral Society. Central Park Building, Tulsa Fairgrounds, 21st Street and Yale, Tulsa, OK. Hours: 7th, 10:00 A.M. - 6:00 P.M.; 8th, 9:00 A.M. - 6:00 P.M.; 9th, 10:00 A.M. - 5:00 P.M. Contacts: Richard Jaeger, 919.481.0249, RjgrSci@aol.com and Virgil Richards, dws@dances-with-snakes.com.

November 21-23, 2008, Marietta, GA—Cobb County Gem & Mineral Society. 23rd Annual Gem & Mineral Show, Cobb County Civic Center, 548 South Marietta Parkway. Hours: 21st & 22nd, 10:00 A.M.-6:00 P.M.; 23rd: 10:00 A.M.– 5:00 P.M. Contact: Mary ingram at 770.427.1108 or mandmingram@comcast.net.

November 22-23, 2008, West Palm Beach, FL - Gem & Mineral Society of the Palm Beaches. 42nd Annual Gem, Mineral, Jewelry, Bead and Fossil Show. Americraft Expo Center East (South Florida Fairgrounds Expo Center East, 9067 Southern Blvd. Hours: 22nd, 9:00 A.M. to 6:00 P.M. and 23rd, 10:00 A.M. to 5:00 P.M. Contact: Carl Bengtson at gemandmineral@bellsouth.net. Website: <http://www.gemandmineral.cc>.

November 28-30, 2008, Columbia, SC - Columbia, SC Gem & Mineral Society. 41st Annual Gem, Mineral, and Jewelry Show 2008. South Carolina State Museum, 301 Gervais St. Hours: Not Provided - call contact. Contacts: Sharon Sterrett at 803.356.1472 or sssterrett@sc.rr.com or Susan Shrader at 803.736.9317 or ashrader@mindspring.com.

November 28-30, 2008, Mobile, AL - Mobile Rock and Gem Society. 14th Annual Gem, Jewelry, Mineral and Fossil Show. Greater Gulf State Fairgrounds at Cody and Zeigler Roads. Hours: 28th, 2:00 P.M. to 7:00 P.M.; 29th, 9:00 A.M. to 6:00 P.M.; 30th, 10:00 A.M. to 5:00 P.M. Contact: Doug Shaw at 251.344.9986.

December 5-7, 2008, Montgomery, AL - Montgomery Gem and Mineral Society. 38th Annual Montgomery Gem, Mineral & Jewelry Show. Garrett Coliseum, 1555 Federal Drive. Hours: 5th, 9:00 A.M. to 6:00 P.M.; 6th, 10:00 A.M. to 6:00 P.M.; 7th, 11:00 A.M. to 5:00 P.M. Contacts: Jane Barkley at 334.277.2722 or Iris McGehee at 334.262.7275.

December 5-7, 2008, Spring Hill, FL - Withlacoochee Rockhounds. 34th Annual Gem and Mineral Show, SNPJ Club County Line Rd. Hours: 9:00 A.M.- 5:30 P.M. each day. Contact: Jerry Johnson at withlacoocheerockhounds.com.

December 13-14, 2008, Nashville, TN— Mid-Tennessee Gem & Mineral Society. 28th Annual Earth Treasures Show, Tennessee State Fairgrounds, Creative Arts Building. Hours: 13th, 9:00 A.M.- 6:00 P.M.; 14th, 10:00 A.M.- 5:00 P.M. Contacts: John Stanley at 615.885.5704 or istanley@picagroup.com OR Steve Henegar at 615.714.3194 or stevehenegar@bellsouth.net.

January 16-18, 2009, Largo, FL-Pinellas Geological Society. 33rd Annual Gem, Jewelry and Mineral Show and Sale, Parkside Room, Largo Cultural Center. Hours: 16th & 17th, 10:00 A.M.-6:00 P.M.; 18th, 12:00 Noon-5:00 P.M. Contact: Hugh Sheffield @727.897.2440.

February 13-15, 2009, Merritt Island, FL-Central Brevard Rock & Gem Club. 32nd Annual Symphony of Gemstones Show, Kiwanis Island Park, 950 Kiwanis Park Rd. Hours: 13th, 1:00 P.M.-6:00 P.M.; 14th & 15th, 10:00 A.M.-5:00 P.M. Contact: 321.153.6379.

2008 REGIONAL FEDERATION SHOWS & CONVENTIONS**Rocky Mountain Federation**

Tulsa, Oklahoma

November 7-9, 2008

Hosts: Tulsa Rock and Mineral Society

South Central Federation and AFMS Convention

Hosts: Houston Gem and Mineral Society

Humble, Texas

September 25-28, 2008

Southeast Federation

Nashville, Tennessee

December 13, 2008

Remember - To insure your show is listed here, send a written notice to the *Lodestar* Editor: Carolyn L. Daniels, 3660 Prince Way, Tucker, GA 30084-8317 or email at: dpdaniels@mindspring.com. ALL SFMS CLUBS ARE ALSO ENCOURAGED TO REGISTER THEIR EVENT LISTINGS ON THE SFMS WEBSITE AT:

<http://www.amfed.org/sfms>.Choose *Submission Guidelines* under the SFMS Shows Column

2008 SFMS Committee Chairmen**Nominations**

Buddy Shotts
P.O. Box 427
Lucedale, MS 39452-9780
601.947.7245
buddys@datasync.com

SFMS Field Trip Committee

Jim Flora
P.O. Box 605
Hiawassee, GA 30546
706.896.8040
jimflora@alltel.net

Publications

Danny Miller
1320 Byrd Circle
Kingston TN 37763
865 406-8802
gciinc@comcast.net

Stamp Program

Jim Robinson
1058 Wilderland Drive
Jacksonville, FL 32225
904.221.5038
jrh30@netzero.net

Youth Resources

Bonita Harris
12520 Jeff Hamilton Road
Mobile, AL 36695
251.865.9157
bonitaharris@mchsi.com

Web Site

Jim Flora
P.O. Box 605
Hiawassee, GA 30546
706.896.8040
jimflora@alltel.net

Long Range Planning

Eileen Price
736 Sedgley Drive
Knoxville, TN 37922

Education

Julia Larson
5297 Huntington Street, NE
St. Petersburg, FL 33703
727.522.1254
juliamlarson@tampabay.rr.com

Safety

Don Monroe
350 Lapidary Lane
Young Harris, GA 30582
706.379.9662
donmonroe@att.net

Supplies

Danny Miller
1320 Byrd Circle
Kingston TN 37763
865 406-8802
gciinc@comcast.net

2008 Annual Meeting Host

-To Be Determined-

William Holland Director

Pat Davis
4642 23rd Avenue N.
St. Petersburg, FL 33713
727.323.2147
whdirector@yahoo.com

Bulletin Contest

Ed Johnson
10215 Macon Road
Jacksonville, FL 32219
904.768.8442
drejjohnson@bellsouth.net

Historian

-To Be Determined-

Slide/Video Programs

Freda Hull
P.O. Box 115
Grant, FL 32949
321.725.0847
fhull@bellsouth.net

Uniform Rules

Diane Johnson
10215 Macon Road
Jacksonville, FL 32219
904.768.8442
drejjohnson@bellsouth.net

Wildacres Director

Dan Griffin
1320 Bird Circle
Kingston, TN 37763
865.406.8802
wildacresdirector@yahoo.com

William Holland Registrar

Denise Talbot
216 Springview Street
Murphy, NC 28906
828.494.7213

Constitution/By-Laws

-To Be Determined-

Insurance Liaison

Roger Campbell
131 Double Falls Road
Pisgah Forest, NC 28768
828.877.4073
campbere@citcom.net

Social Concerns

-Optional - Position Not Filled-

Ways & Means

Frank Decaminada
795 Nile Drive
Alpharetta, GA 30022
770.992.8309
carrie128@comcast.net

Wildacres Registrar

Mrs. B. J. Gearhart
631 Lake Overlook Drive
Canton, GA 30411
770.479.0963
waregistrar0809@yahoo.com

Public Relations

Herb Whittington
2102 Brookhill Road
Dothan, AL 36301
334.793.6811

2008 Mayo Educational Foundation, Inc. Officers/Directors**President**

William (Bill) G. Waggener
1909 Moores Mill Road
Atlanta, GA 30318-1309
404.355.7377
wqwaggenerii@bellsouth.net

Vice-President

Steve Henegar
3415 Northboro Court
Murfreesboro, TN 37129-1209
615.896.1472
stevehenegar@bellsouth.net

Treasurer

Frank Decaminada
795 Nile Drive
Alpharetta, GA 30022
770.992.8309
carrie128@comcast.net

SFMS Education Chairman

Julia Larson
5297 Huntington Street, NE
St. Petersburg, FL 33703
727.522.1254
juliamlarson@tampabay.rr.com

**Director**

Charlotte Mayo Bryant
506 Rain Song Road
Dalton, GA 30270
706.278.8344

Director

Jeanette Banks
119 Eddie Lane
Mableton, GA 30126
770.948.8444
ojbanks@comcast.net

Secretary

Eileen Price
736 Sedgley Drive
Knoxville, TN 37922
865.694.4071
rfeprice@yahoo.com

2008 SFMS Representatives to AFMS Committees**Club Rockhound of the Year**

Herb Whittington
2102 Brookhill Road
Dothan, AL 36301
334.793.6811

Boundaries

Janie Hand
253 Wanda Drive
Brandon, MS 39042
601.825.3989
fossilfinder2@aol.com

Bulletin Editors

Carolyn L. Daniels
3660 Prince Way
Tucker, GA 30084
770.723.1359
dpdaniels@mindspring.com

Club Publications

Danny Miller
1320 Byrd Circle
Kingston TN 37763
865 406-8802
gciinc@comcast.net

Conservation & Legislation

John Wright
3304 Nottingham Road
Ocean Springs, MS 39564
228.875.4191
osjwb@datasync.com

Collecting Sites

Mike Streeter
7 English Place
Candler, NC 28715
828.667.8290
mcastreeter@charter.net

Education All American

-To Be Determined-

Endowment Fund

Ken Anderson
2023 Briarwood Circle
Fort Mill, SC 29715-7027
803.547.5147
27k.da66@rjsonline.net

Juniors Program

Bonita Harris
12520 Jeff Hamilton Road
Mobile, AL 36695
251.865.9157
bonitaharris@mchsi.com

Program Competition

Freda Hull
P.O. Box 115
Grant, FL 32949
321.725.0847
fhull@bellsouth.net

Supplies & Publications

-To Be Determined-

Uniform Rules

Roy Deere
7041 Rodes Place
W. Melbourne, FL 32904
321.725.9179

Ways & Means

Frank Decaminada
795 Nile Drive
Alpharetta, GA 30022
770.992.8309
carrie128@comcast.net

Public Relations

Herb Whittington
2102 Brookhill Road
Dothan, AL 36301
334.793.6811

Safety

Don Monroe
350 Lapidary Lane
Young Harris, GA 30582
706.379.9662
donmonroe@att.net

Webmaster

Jim Flora
P.O. Box 605
Hiawassee, GA 30546
706.896.8040
jimflora@alltel.net

The policy of the Southeast Federation of Mineralogical Societies, Inc. is that neither the name nor the logo of the Federation may be used for commercial purposes. If any commercial ventures using the name or the logo of the Federation are found, Member Societies and their members are requested to advise Federation Officers.

THE SOUTHEAST FEDERATION OF
 MINERALOGICAL SOCIETIES, INC.
 Carolyn L. Daniels, Editor
 3660 Prince Way
 Tucker, Georgia 30084-8317



Non-Profit
U. S. Postage Paid
Tucker, Georgia
Permit No. 317

Lodestar Subscription			
Name:		Telephone:	
Club/Society Affiliation:			
Mailing Address:		Email Address:	
City:	State:	Zip Code (plus four):	
Special Interests:			
Check all that apply:	New Subscription	Renewal	Address Change
<u>Subscription rates are \$10.00 per year for 10 issues.</u> (Not published in June or August) -Make checks payable to Southeast Federation of Mineralogical Societies - Mail to SFMS Editor: Carolyn L. Daniels, 3660 Prince Way, Tucker, GA 30084-8317			
Recorded:	Date Entered:		To Treasurer: