



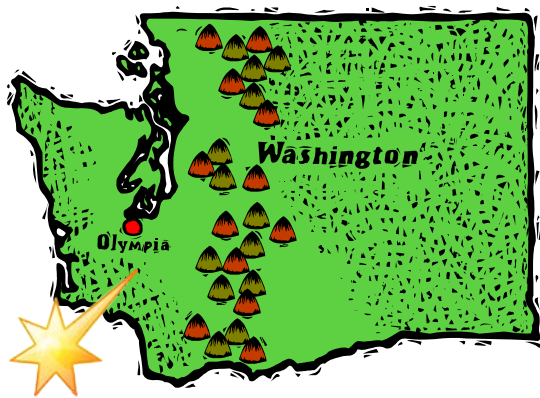
NORTHWEST NEWSLETTER



Northwest Federation of Mineralogical Societies
Tom Burchard, Circulation
875 E 4500 S
S Ogden, UT 84403-2913

Address service Requested

VOLUME 51, NO. 8 Northwest Federation of Mineralogical Societies MAY 2011



Welcome to Lewis County, Washington

The NFMS Annual Meeting Chehalis, WA July 29-31, 2011

It is now time to think about the NFMS Annual show. The show site is in Lewis County, Washington. The show is called a *COMMUNITY EXPERIENCE*. The Federation web site will give you a link to views and attractions in our county.

What is different about this show? Lewis County at one time was home to five rock and gem clubs. Now we have none. With all the collecting sites available and people who enjoy the hobby, why not. The Federation is putting on the show to bring those people together. We hope to find enough individuals to create a new club. This club should be able to work with the local land owners to keep sites open.

About the show: The location is the Southwest Washington Fairgrounds, 2555 N National Ave, Chehalis, WA 98532. We will be using the 9,000 sq. ft. Blue building. The show will open on Friday, July 29th at 10am and close at 6pm. Friday is also the annual meeting day. The pre-registration starts at 5pm with the annual meeting at 6pm. Location of the meeting is in the 4-H Hall. A map will be available at the show. For camping and motels, check web site and click on accommodations.

Junior Club Seminar

What makes a junior club work? Gary wrote several articles for the NW Newsletter. What we hope to do is add to this knowledge. Saturday at noon will be a meeting for junior clubs. We would like the Junior clubs to send one or two of their members, more if you like, to talk about what works for them. We will have someone take notes so this information can reach our web site and newsletter.

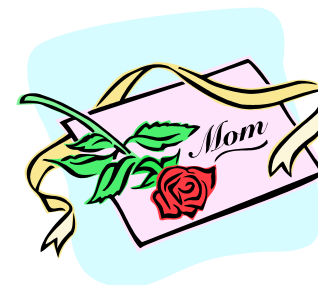
Rock Auction

WE NEED MATERIAL. The show committee will supply some of the material for the events. What we need is for those Federation members attending the show bring a bucket or two. If you have something that you don't want to give away, we will have long term auctions running each day. These auctions will work on a 60/40 split with the NFMS making 40%. The oral auction also needs material. All members making donations to the oral auction will receive a receipt for the amount of the bids.

It is the show committee's belief that the community will enjoy what we have to offer and understand what our hobby is all about. We should not have a problem in finding community members interested in developing a club.

(Information continued on page 3)

Note that Display, Pre-registration and Credentials forms
are on pages 7 and 8 in this issue



Non-Profit Org.
U.S. Postage Paid
Burley ID 83318
Permit No. 9

What's Inside:

Annual Meeting	1
Annual Meeting and VP Reports	3
Various Reports	4
Editor's Rockpile ,	4
Notice of Printing Schedule	4
Running out of Rocks?	5
AFMS Meeting	6
Stamps and Calendar	6
Annual Meeting (Forms).....	7
Annual Meeting (Credentials) .	8
Various Reports	9
Public Lands Issues	10
Mid-Year Report	10
Field trip Info	11
Junior's Update	11
Shows	11-12

JUNE/JULY NEWSLETTER
ARTICLES ARE DUE ON
MAY 15TH

Contact
Beth Heesacker
Email: nfmseditor@coho.net

NFMS Website:
www.amfed.org/nfms

NFMS EXECUTIVE OFFICERS 2010-2011

PRESIDENT: Fritz Mack, Everett Rock & Gem Club, 10619 Holly Dr., Everett, WA 98204, 425.513.0115, rockngem_mack@comcast.net
1st VICE PRESIDENT: Judi Allison, Hatrockhounds Gem & Mineral Society, 1701 NW 11th #A, Hermiston, OR 97838, (541) 720.4950, jall@eotnet.net
2ND VICE PRESIDENT: Kathy Moedl, Idaho Falls Gem and Mineral Society, 149 E. 1st N, Rexburg, ID 83440, (208) 356-4169, kmoedl@cablone.net
EXECUTIVE SECRETARY: Joan Day, Golden Spike Gem & Mineral Society, 509 Highland Blvd., Brigham City, UT. 84302, (435) 723-3830, joanday@sisna.com
TREASURER: Lyle Vogelpohl, West Seattle Rock Club, 8810 37th Ave. SW, Seattle, WA 98126-3617, (206) 932-3292, nfmstreasurer@comcast.net

NFMS STANDING COMMITTEES

BUDGET: Judi Allison, 1st Vice President (see above)
BULLETIN AIDS: Peggy Blickfeldt, Idaho Gem Club, 236 Tollgate Rd., Boise, ID 83716, (208) 345-8774, pblick@ymail.com
CIRCULATION: Tom Burchard, Golden Spike Gem & Mineral Society, 875 E 4500 S, S. Ogden, UT 84403, (801) 479-4286, Roxhund@aol.com
CREDENTIALS: Del & Clara Walker, Tualatin Valley Gem Club, 12377 SE Davis Loop, Prineville, OR 97754, (541) 447-7826, dcwalker@embarqmail.com
CUSTODIAN: Kathy Moedl, 2nd Vice President (see above)
DIRECTORY: Audrey Vogelpohl, West Seattle Rock Club, 8810 37th Ave. SW, Seattle, WA 98126-3617, nfmsdirectory@comcast.net
EDUCATION: Jim & Libby Spencer, Clackamette Mineral & Gem Society, 660 Collins Crest, Gladstone, OR 97027, (503) 650-5027, the_spencers@comcast.net
ENDOWMENT FUND: CHAIRMAN: Edna Nelson, Mt Hood Rock Club, 66830 Maple Crest Rd., Deer Island, OR 97054, (503) 397-5284, snelson@ados.net ;
TREASURER: NFMS Treasurer (see above)
EXHIBITS REGISTRAR: Carol Cimolino, Marysville Rock and Gem, Marysville, WA, 1429 Ave D PMB 518 Snohomish, WA 98290, (360)668-0378, ccubed1@earthlink.net
FINANCIAL ADVISOR: Jon Spunaugle, 4841 Doctor Eldridge Dr., Washougal, WA 98671, 360.624.7604, jonspe@comcast.net
HISTORIAN: Shirley Leeson, Bitterroot Gem/Mineral Soc, Hamilton, MT, P.O. Box 23, Tendoy, ID., 83468-0023, (619) 460-6128 or (208) 756-2394, beauholland@centurytel.net
JUDGING DIRECTOR: Larry Hulstrom, Lakeside gem and Mineral Club, Kennewick, WA, 5409 W 26th, Kennewick, WA 99338, (509)783-6210, rockhound132@charter.net
JUNIORS CHAIR: Rick Bower, P.O. Box 184, Caldwell, ID 83606, 208-697-6605; sunstonesandsuch@peoplepc.com
NEWSLETTER EDITOR: Beth Heesacker, Clackamette Gem & Mineral Corp., 4145 NW Heesacker Rd., Forest Grove OR, 97116, (503) 357-8804, nfmseditor@coho.net
NFMS Club-at-Large: 1st Vice President (see above)
NOMINATING CHAIRMAN: : Evelyn Cataldo, Lakeside Gem & Mineral Club, 99509 Brandon Dr. Kennewick, WA, 99336, (509) 628-0170, ecataldo@cbtabs.com
OPERATIONS REVIEW: OPEN
PAST PRESIDENTS COUNCIL: Chuck Sonner, Southern WA. Mineralogical Society, 165 Tingle Rd., Winlock, WA. 98596, (360) 785-3909, chuckagate2@yahoo.com
PUBLIC LANDS ADVISORY: Andy Johnson, Lakeside Gem & Mineral Club, P.O.Box 3251, Pasco, WA 99302, (509)546-1950, washatonian2@hotmail.com
SLIDE/ VIDEO LIBRARIAN: Tim and Sharon DeGrie, Lakeside Gem & Mineral Club, P.O. Box 458 Goldendale, WA 98620, 509-772-2533, cell 509-910-9228 ROCKNlibrary@yahoo.com
RESOLUTIONS: Fred Burton, Golden Spike Gem & Mineral Society, 90 Lakeview, Tooele, UT 84074, (435)882.8614, fburton@trilobyte.net
RULES & AWARDS CHAIR: Dee Holland, Bitterroot Gem/Mineral Soc, Hamilton, MT, P.O.Box 23, Tendoy, ID, 83468, (208) 756-2394, beauholland@centurytel.net
SAFETY: OPEN
SCHOLARSHIP: Rose Alene McArthur, Hells Canyon Gem Club, 14 Debertin Drive, Orofino, Idaho, 83544, (208) 476-3840, obmcarthur@cpinternet.com

SHOW CHAIRPERSON 2011: Chuck Sonner, Southern WA. Mineralogical Society, 165 Tingle Rd., Winlock, WA. 98596, (360) 785-3909, chuckagate2@yahoo.com
SHOW CHAIRPERSON 2012: Larry Hulstrom and Evelyn Cataldo, Lakeside Gem and Mineral Club, 5409 W. 26th, Kennewick, WA, 99338, (509) 783-6210,
SHOW COORDINATION: Pat Lambert, Lakeside Gem & Mineral Club, 26106 S. Oak, Kennewick, WA 99337, palambert@charter.net
STAMPS: Hermina Kolski, Club-at-Large, 208 Riverview 2 East, Great Falls, MT 59404-1534, 406-231-0620
SUPPLIES: Tim Hoff, Butte Mineral & Gem Club, 1016 Waukesha Ave, Butte, MT., 59701, 406-491-3587, nwfm.timhoff@bresnan.net
WAYS & MEANS: Janice Van Cura, Willamette Agate & Mineral Society, Inc.3448 NW Covey Run, Corvallis, OR 97330 (541)753-2401, jvancura@peak.org
WEBMASTER: Jack Eads, Kitsap Mineral & Gem Soc., 5169 E. Hillcrest Drive, Port Orchard, WA. 98366-8101, (360) 871-2445, jacke@wavecable.com
NFMS WEB SITE: www.amfed.org/nfms

NFMS SPECIAL COMMITTEES

FIELD TRIP CHAIRMAN: Doug True, Billings Gem & Mineral Club, 2622 Broadwater, Billings, MT 59102, 406.670.0506, dtruefossils@yahoo.com
LONG RANGE PLANNING: Bryan Schroeder, Lakeside Gem & Mineral Club, 153 Spring St., Richland, WA 99354, (509) 371-1572, bks1939@gmail.com
NORTHWEST ROCKHOUND RETREAT (Hancock): Lamar Tilgner (Chair), Mt. Hood Rock Club, 200 SE Olvera Ave., Gresham, OR 97080, (503) 666-2905, lstilgner1@verizon.net
OPERATIONS PROCEDURE UPDATE: OPEN
ROCKHOUND OF THE YEAR: Viola Jones, Skagit Rock & Gem Club, P. O. Box 2841, Mt. Vernon, WA. 98273, (360) 424-8340, rocks1x1vi.george@frontier.com
WEBSITE COMPETITION: OPEN

AFMS COMMITTEES (NFMS Representatives)

AFMS 1st VICE PRESIDENT-Lauren Williams,
ENDOWMENT FUND- Edna Nelson, **EDITORS HALL OF FAME-Open, NEWSLETTER EDITOR-**Beth Heesacker,
NFMS CLUB BULLETINS-Peggy Blickfeldt,
ROCKHOUND OF THE YEAR-Viola Jones,
CONSERVATION & LEGISLATION-Darlene Posthuma,
EDUCATION-ALL AMERICAN AWARD- Jim & Libby Spencer, **INTERNATIONAL RELATIONS-**Bill and Janet Smith, **JUNIORS PROGRAM-Open, PROGRAM COMPETITION-Open, PUBLIC RELATIONS-OPEN, SAFETY-OPEN, SCHOLARSHIP FOUNDATION-**Dee Holland & Rose McArthur, **SUPPLIES AND PUBLICATIONS-**Tim Hoff, **JUDGE TRAINING COMMITTEE-**Dee Holland, **UNIFORM RULES-**Dee Holland (Director), **WAYS AND MEANS-**Glenn Lee (chair) & Janice Van Cura, **WEBSITE-**Jack Eads.

THINGS YOU SHOULD KNOW

The **AMERICAN LANDS ACCESS ASSOCIATION (ALAA)** is a 501(c)(4) organization. Its purpose is to promote and ensure the right of amateur hobby fossil and mineral collecting, recreational prospecting and mining, and the use of public and private lands for educational and recreational purposes; and to carry the voice of all amateur collectors and hobbyists to our elected officials, government regulators and public lands managers. Your annual individual membership fee of \$25.00 helps support their activities. Club membership is \$50 per year. Contact: Shirley Leeson, ALAA Vice President, P.O. Box 23, Tendoy, ID, 83468, shirleyleeson@cox.net or beauholland@centurytel.net

The **AFMS NEWSLETTER** is published monthly except Jan-Jul-Aug by the American Federation of Mineralogical Societies. Each NFMS member club should have three people (usually the Pres, Secretary, and Editor) receiving the AFMS Newsletter. If they are not, or if anyone else wants to subscribe (\$4.50 per year). Contact:: AFMS Central Off., Steve Weinberger, P.O. Box 302, Glyndon, MD 21071-0302 cebar62@aim.com Make checks payable to "AFMS".

The **NORTHWEST NEWSLETTER** is the official publication of the Northwest Federation of Mineralogical Societies (NFMS) and is usually published ten (10) times per year. This publication is brought to you through your club membership in NFMS. The purpose of the Northwest Newsletter is to keep all

NFMS members informed of activities and events pertaining to the business and services of the Federation. The Newsletter is printed and mailed to approximately 3500 homes in six states by Burley Reminder in Burley ID. For matters related to the Newsletter (i.e. content, advertising, etc) contact the **Newsletter Editor**. For matters related to the Newsletter circulation (new members, address changes, etc.) contact **Circulation**.

SHOW COORDINATION. Your Federation provides a free service for NFMS members by listing your show in this Newsletter, on the NFMS website, two magazines ("Rocks and Minerals" and "Rock and Gem") and the on-line Calendar from "Lapidary Journal". Please provide the date and time for the show, the club name and show title (if applicable), the location of the show, and most important a contact person with address, e-mail address and/or phone (e-mail is preferred). Please send your show information four to six months in advance to the **Show Coordination** Chairperson. If you see an error once your show is listed, or if your show is not listed, contact the **Newsletter Editor**.

SAVE STAMPS PROGRAM. NFMS members are encouraged to use and save commemorative stamps. The money generated from the sale of these used (cancelled) stamps is then donated to Cancer Research. The collected stamps can be sent to the **Stamps Chairman**, brought to the NFMS Annual Show or given to your Federation Director in your club.

ATTENTION CLUB TREASURERS**Where to send your money**

To NFMS Treasurer for:

1. Dues and supplies
2. Donations for the general fund
3. Donations to Junior Achievement
4. Advertisement in this Newsletter

Send to: Lyle Vogelpohl, see Treasurer this page.

To NFMS Endowment Fund Treasurer for:

1. Donations to Endowment Fund
2. Memorial contributions

Make check payable to NFMS Endowment Fund, send to Endowment Fund Treasurer.

To NFMS Scholarship Chairperson for:

1. Donations to AFMS Scholarship Fund
2. Memorial contributions to AFMS Scholarship

Make check payable to AFMS Scholarship Fund. Send to: Rose Alene Mc Arthur (see Scholarship this page).

To AFMS Endowment Fund for:

1. Donations to AFMS Endowment
2. Memorials

Send to: See AFMS Newsletter

To ALAA Treasurer for:

1. Memberships, new and renewals
2. Donations

Make check payable to ALAA
 Send to Joyce Hanschu, ALAA Treasurer, 6607 Sturbridge Ln; Canton, MI 48187-2638

NFMS NEWSLETTER AND WEBSITE ADVERTISEMENT

Members, Non-members, clubs, etc. can advertise in the Northwest Newsletter. This service is provided to help defray the cost of printing and mailing the newsletter and is encouraged by the Federation. The only criteria for the ad is that it be hobby related (e.g. rocks, equipment, grit, shows, etc.).

Ads for the Northwest Newsletter are \$1.50 per square inch.

Example: 3" x 4" ad = 12 inches

12 inches x \$1.50 = \$18 per issue of the Newsletter
 For an additional 50% of the cost of the Newsletter ad, you can have the same ad placed on the NFMS website for the same length of time. The Newsletter ad must be purchased to receive this additional advertisement.

Do not send ads on colored paper because the back-ground will look gray in the ad. The Editor will send a billing statement to the customer which will include instructions to make payment to the NFMS Treasurer. For more information or questions, call, e-mail or write the **Newsletter Editor**

To see this newsletter in living color and to see it by the first of the month go to <http://www.amfed.org/nfms/newslet2.htm> and click on the month you want to see.

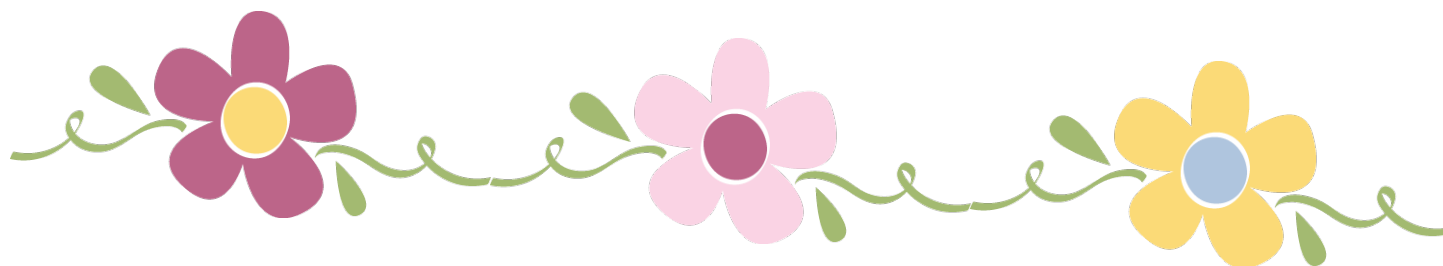
ANNUAL MEETING, CONTINUED

Meals

We will be using the Lewis County Senior Center for our Awards Banquet, Editor's Breakfast and Past President & Committee members Luncheon. This building is next door to the fairgrounds and within 100 yards of our show. The Editors Breakfast is Saturday the 30th at 8am. The menu will be breakfast casserole, fresh fruit, juice, coffee, bread and pastries. The Awards Banquet will start at 6pm on the same day, Saturday the 30th. Complementary local wines will be available. Dinner will be served at 7pm. Menu will be choice of roast beef or roast turkey, Mashed potatoes and gravy, mixed vegetables, salad, rolls, homemade desserts, ice cream, lemonade, iced tea and coffee. The Past Presidents Luncheon will be at noon Sunday the 31st. The menu is meat loaf, mashed potatoes & gravy, carrots, salad, lemonade, iced tea & coffee. The senior center has great cooks and gets their seniors involved. We are looking forward to a great time.

Directions

The fairgrounds are on the east side of I5 between exits 79 & 81. Coming south bound, exit 81 and turn left (east.) This will be Mellon Street. Go approximately 7/10 of a mile to Pearl Street. This will be a one way street heading south. Follow it over the viaduct. At this point the street becomes National Ave. Go another one miles until you see the Fairgrounds on the right. We will be at the south end of the Fair. Signs will lead the way. Coming north bound on I5, you will exit 79 and turn right. Follow Chamber Way until the 'T' intersection (100 yards). Turn left and follow National Ave. It will turn into a one way street heading north called Kresky Rd. Follow Kresky for about 6/10th of a mile. Turn left at either Scott Johnson Rd of Fair Street. Both will lead to National Ave and the Fairgrounds. Remember, we are at the south end between the Fair Office and the Senior Center.



Judi Allison
1st VP

Isn't being a member of an organization a fun and rewarding thing? We get to meet new people, have a say in what is going on and enjoy taking part in activities that are of interest to us. But, along with the joys of membership, come responsibilities. We have rules and guidelines to follow. We have meetings to be set up and run, activities

to be planned and prepared and the expectation of participation.

We may become frustrated when only a few participate or when others don't view a point in the same manner that we do. We might attempt to continue making an issue of something that has been resolved or be completely resistant to change. As humans, we have all most likely experienced these things from others or ourselves.

As a preschool teacher, I find it interesting how cyclical our lives are. Preschoolers are learning to become members of social groups. They are developing the ability to take on responsibilities and discovering that their preference may not always be what is chosen. They are learning to adapt and compromise. In so doing, they are becoming valuable and valued members of society.

As adults, we have presumably learned all these lessons about being part of a group, but we sometimes have a tendency to forget and believe our agenda is the correct one. We may belabor a point that is of little importance to most. Or we may feel that a rule or guideline is

unjust, so we need not follow it. We may want to "pick up all our marbles, go home by ourselves and pout."

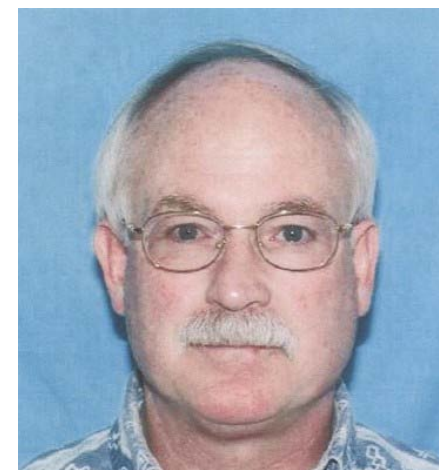
Let's all take a lesson from the preschoolers instead, and learn to share, use our words and play nice.

Note: I wrote this earlier in the month, so I just want to add that we had a nice mid-year meeting with members remembering their preschool lessons. It was great to see all who were there, and I look forward to seeing everyone at the show and convention in Chehalis in July. Take care, everyone.



Kathy Moedl
2nd VP

Kathy was unable to attend the NFMS Mid-Year Meeting. Her husband Grant Moedl is still missing. Continue to keep them in your prayers and good thoughts.



NEWS OF INTEREST



Rockhound of the Year Nomination

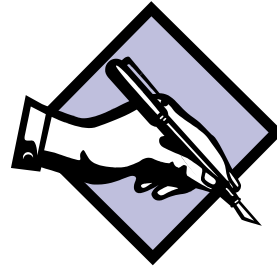
The Lakeside Gem and Mineral Club of Kennewick, WA is proud to name THORA

TRUMBO, our Junior Club Leader, as our Rockhound of the Year. Thora's background in education provides the juniors with valuable learning experiences in creative hands-on projects, i.e., plate tectonics using orange peels; sands, rocks and water to teach mountain formation; marsh-mellows and pretzels to demonstrate crystal formation. Juniors are rewarded by Thora for choosing a mineral and then giving a monthly written and oral report during club meetings.

This Show and Tell session gives them experience in public speaking and they get to keep the mineral. Thora also arranges field trips, engages guest speakers and craft sessions for juniors--encouraging Scout troops and home schoolers to participate. She supports the AFMS Future Rockhounds of America badge program. The Annual Show Kid's Corner is fun and educational for juniors and Thora makes sure there are lots of polished rocks for activities.

Thora goes above and beyond for our juniors and is our Rockhound of the Year nominee for 2011.

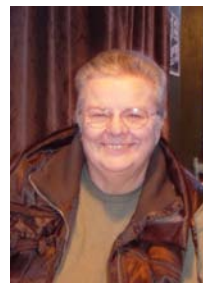
Submitted by Pat Lambert, Membership Chairman



Notice to Bulletin Editors: By Peggy Blickfeldt

A note to all editors; I would really appreciate it if you would send me your email addresses as it would make my life so much easier when trying to relay information to each of you. I have a special email address for Bulletin Aids. It is pblick@ymail.com Please send all correspondence to this address.

Also, there will be an editors' breakfast at the Federation Show in July. I will be doing a program on the bulletin aid contest. I will also be passing out the awards. More information about time, date and place later and on the NFMS website under Show.



From the Editor's Rockpile By Beth Heesacker

Many thanks for all the prayers and good thoughts during my knee replacement surgery. All went very well. I am already walking with a cane with occasional short excursions without any added support, and up and down stairs. I look forward to lots of rockhounding this summer.

The snow is leaving the hills and passes. Still a bit in the mountains which helps to make sure we have enough water though the summer. The rains are washing off the rocks the winter freezing has broken loose. The stage is set for a summer of fun. Time to clean and check-out the tools you did not get to last fall. Make sure everything is in good shape and safe to use. Let's have a safe and fun summer.

And a Happy Mothers' Day to all my fellow Mothers.

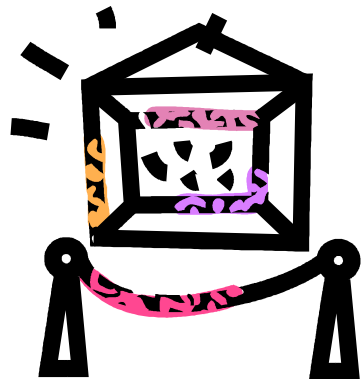


Please note that there will be a combined June/July Issue of the Northwest Newsletter which will be printed in June. Deadline for submissions is May 15th.

There will not be an issue in July.

The August edition will come out a bit later in August and include any follow-up on the NFMS Annual Meeting. The deadline for articles will be August 3rd.

Please plan your articles and announcements accordingly.



National Rockhound and Lapidary Hall of Fame

It's time to nominate the artist that has spent a life time sharing their talents with others. That special person with outstanding metal craft or lapidary skills, Is there a person in your club or federation

that is worthy of and is nationally known and has been involved in the earth sciences or lapidary arts for at least fifteen years

- To make a nomination: List Name, Address, Phone Number and E-mail (if Known} of your nominee
- Choose a category: Minerals, Lapidary, Metalcraft, Fossils, Education or Tribute (deceased)
- Include the name of a contact person as well as his or her address, phone number and e-mail.
- Mail to Steve Weinberger, P.O. Box 302: Glyndon, MD 21071-0302
Or e-mail to escrystals2@verizon.net
- Include as much information as possible about the nominee and the reasons he/she should be inducted into the National Rockhound and Lapidary Hall of Fame
- Nominations may be made at any time
- Balloting on the nominations will generally be in the spring of each year. Any nomination that is submitted too late for the current year will be included the following year

If you have any questions or need more information please call or email me: email to: dtruefossils@yahoo.com
Doug True (Northwest) (406) 670-0506
Hall of Fame Consultant

NEWS OF INTEREST

Geologists: 'We May Be Slowly Running Out Of Rocks'

May 1, 2010 | ISSUE 46•17

RALEIGH, NC—A coalition of geologists are challenging the way we look at global stone reserves, claiming that, unless smarter methods of preservation are developed, mankind will eventually run out of rocks.



may have once been filled with

"If we do not stop using them up at our current rate, rocks as we know them will be a thing of the past," renowned geologist Henry Kaiser said at a press conference Tuesday. "Igneous, metamorphic, even sedimentary: all of them could be gone in as little as 500,000 years."

"Think about it," Kaiser added. "When was the last time you even saw a boulder?"

The scientists warned that, although people have long considered the world's rock supply to be inexhaustible, it has

not created a significant number of new rocks since the planet cooled some 3.5 billion years ago. Moreover, the earth's rocks have been very slowly depleting in the last century due to growing demand for fireplace mantels, rock gardens, gravel, and paperweights.

Kaiser claims that humanity has "wreaked havoc" on the earth's stones by picking them up, carrying them around, and displacing them from their natural habitat.

"A rock can take millions of years to form, but it only takes a second for someone to skip a smooth pebble into a lake, and then it is gone." Dr. Kaiser said. "Perhaps these thoughtless rock-skippers don't care if they leave our planet completely devoid of rocks, but what about our children? Don't they deserve the chance to hold a rock and toss it up and down a few times?"

Continued Kaiser, "We are on a collision course to a world without rocks."

Geologist Victoria Merrill, who has been at the forefront of the rock conservation battle since 2004, said there are simple steps people can take to reduce their rock consumption.

"Only take as many rocks as you absolutely need," said Dr. Merrill, author of the book *No Stone Unturned: Methods For Modern Rock Conservation*. "And once you are finished with your rocks, do not simply huck them into the woods. Place the rock down gently where you found it so that others may look at the rock and enjoy it for years to come."

Merrill went on to point out that, even if there were some "magic hole" in the earth's crust that could miraculously spew out rocks every 10 years or

so, modern society's obsession with rocks means that we would still run out of them far more quickly than they could be replenished.

"Just look at the pet rock craze: In 10 years, millions upon millions of rocks were painted, played with, and discarded like trash," Merrill said. "Looking back, mankind's arrogance and hubris is startling."

But critics of the movement have already begun to surface, claiming that Kaiser and his colleagues are simply preying on people's fears of losing rocks.

While acknowledging that we should reduce our dependence on foreign rocks, many have argued that the current rock supply could easily last for the next 2 million years, by which time technology will have advanced enough to allow for the production of endless quantities of cheap, durable basalt.

Others who oppose the rock-loss theory claim that rocks were put on the earth to be used by humans in marble statues or kitchen countertops as they see fit.

"Take the Rocky Mountains, for example: There's plenty of rocks right there," Colorado resident Kyle Peters said. "It's our right as Americans to use as many rocks as we need for whatever purposes we decide, and no scientist is going to scare me into thinking otherwise."

"This country was built on rocks," he added. "Remember that."

Reprinted with permission of THE ONION.

Copyright © 2011, by ONION, INC.

www.theonion.com

[Editor's Note : The Onion is a satirical web newspaper.]

**MT. BAKER ROCK & GEM
CLUB**
PRESENTS

**“ROCKHOUNDS RECYCLING
RENDEZVOUS”**

**TAILGATE,
SWAP, AND SELL,
ROCKS & Related Items**

SIGN UP FOR A SPACE — 360-384-3187
(\$15.00 FEE) 360-366-0121
(FIRST COME FIRST CHOICE) TAILGATE OR TABLE / TENT

**ROCKHOUNDS AND PUBLIC WELCOME
(OUTDOOR)
EVENT**

GREAT LOCATION
Blaine, WA.

DATE: SATURDAY - JUNE 18th 2011
PLACE: BIRCH BAY SQUARE I-5 EXIT 270
TIME: 10:00 AM --- 5:00 PM
set - up at 9:00

NEWS OF INTEREST



AFMS / EFMLS combined Convention and the Syracuse Gem & Mineral Show “Gems and Minerals along the Erie Canal” July 6 – 10, 2011

July 6

12:00 pm Convention Registration. Ramada Inn, 1305 Buckley Rd.
Syracuse

2:00 PM AFMS Uniform Rules Meeting - Ramada Inn

July 7th

8:00 am – Convention Registration - Ramada Inn

Set up for AFMS meeting

9:00 am AFMS Annual Meeting - Ramada Inn

AFMS Scholarship Foundation Meeting follows - Ramada Inn

12:30 PM Presidents' Luncheon - Ramada Inn

4:30 pm Cracker Barrel (social hour) - Erie Canal Park Camillus

July 8th

8:00 am Convention Registration – Ramada Inn

10:00 am show set up at fairgrounds

6:30 PM Sign in for EFMLS Annual Meeting – Ramada Inn

7:00PM EFMLS Annual Business Meeting – Ramada Inn

July 9th

10:00 am “Gems Along the Erie Canal - 45th Gem, Mineral , Fossil,
and Jewelry Show” opens at the NYS Fairground

2:00 pm EFMLS Endowment Fund Auction - Fairgrounds

6:00 pm EFMLS/AFMS Awards Banquet – Ramada Inn

7:00 pm Awards Banquet

July 10th

8:00 am Breakfast With the Editors and Webmasters - Ramada Inn

10:00 am – 4 pm Show at New York State Fairgrounds

If You Have Questions, please contact **Cathy Patterson, Show
Chairman, 315-638-8817 (home) or 315-480-8907 (cell)**
cathypatterson@verizon.net

For registration form answers please contact **Lou Budell**
315-673-1891 loubudell@gmss.us

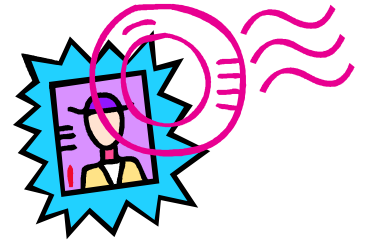
All forms can be found on the AFMS website

<http://www.amfed.org/show2011.htm>



Stamps for Cancer Research

By Hermina Kolski
NFMS Stamp Chair



Over the past 17 years, we have had extreme good luck with our stamp dealer. This past year, he has retired and the new dealer has requested that we hold any future shipments until they can reorganize.

Meanwhile, we will continue to gather stamps so we can have a shipment ready when they contact us. So, please keep saving stamps for cancer research.

We will be at the mid-year meeting in Kennewick, April 16th, and in Chehalis, July 29 & 30., but must start back then. We can't stay for Sunday.

We now have collected \$5429.30 so far and hope to add more soon. Thank you all for your help.



Mark Your Calendars:

AFMS Annual Meeting

July 7–10, Syracuse, NY

NFMS Annual Meetings

2011 – July 29-31, Southwest Washington Fairgrounds,
Chehalis, WA

2012 – May 18-20, Benton County Fairgrounds,
Kennewick, WA

Inter-Federation Rockhound

Rendezvous

Hampton Butte, OR - Memorial Day weekend,
May 27-30, 2011

For more information see the March Northwest
Newsletter.

NW Rockhound Retreat

Hancock Field Station, Antelope, OR - Labor Day
weekend, September 5-11, 2011

ANNUAL MEETING, CONTINUED

Northwest Federation of Mineralogical Societies
2011 Annual Show
Pre-Registration Form

[one form per individual]

Show hours are Friday the 29th of July 10am to 6pm, Saturday the 30th of July 10am to 6pm & Sunday the 31st of July 10am to 5pm.

Admission for Adults (17 and under free):

Daily \$2
Three day pass \$ 5

Meals:

Editor's Breakfast (Saturday 30th - 8am) \$6.00

Banquet (Saturday 30th -6pm) Adult \$17.50
Junior (17 and under) \$12.50

Meal choice (Please check) Beef Turkey

Past Presidents Luncheon (Sunday 31st 12pm) \$8.00

Misc:

Show Pins (Show price \$3.00) \$2.50 ea

Total

Please check all of the following if they apply: NFMS Executive Board*

Dealer * Exhibitor*

AFMS or Regional Federation Executive Board*

*If you check any of the above, admission to the show is free.

Name: Address:

City: State: Phone:

The Show Committee needs help in the following areas: Silent Auction, Junior Activities and Security. If you are able, please let us know which and what days :

Make payment out to the Northwest Federation of Mineralogical Societies at return form and payment to: EDNA NELSON P.O. BOX 1549, ST. HELENS, OR 97051

NORTHWEST FEDERATION OF MINERALOGICAL SOCIETIES
2011 Annual Show
APPLICATION FOR DISPLAY SPACE

Displayer's Name:
Address:
City: State: Zip:

PLEASE CHECK THE FOLLOWING:

I have my own case [] I need a loner case []

Case size: 4' [] 6' [] 8' []

Display Description:

Note:

We have 4' cases to loan which includes liners but no risers.
We do not have any 6' or 8' loaners.

Liability:

It is mutually agreed that the Northwest Federation of Mineralogical Societies shall not be liable to any Exhibitor in whole or in part. This includes the destruction or loss of any properties of said Exhibitor.

Security:

Northwest Federation of Mineralogical Societies will provide will provide security during setup, take down and the duration of the show.

Show Hours:

Friday, July 29th and Saturday, July 30th 10 A.M. to 6 P.M.
Sunday, July 31st 10 A.M. to 5 P.M.
SETUP THURSDAY July 28th 3 P.M. to 8 P.M. &
FRIDAY July 29th 8 A.M. to 10 A.M.

Show location:

Southwest Washington Fairgrounds Blue Pavilion
2555 North National Ave, Chehalis, Washington 98532

Return to exhibits chair:

Tanya Sonner
165 Tingle Road, Winlock, Washington 98596
Phone; 360 785-3909 e-mail: csonner2011@gmail.com

Exhibitors Signature :

ANNUAL MEETING, CONTINUED

A REMINDER AND REQUEST FROM THE CREDENTIALS COMMITTEE

The NFMS Credentials Committee Chairpersons, Clara & Del Walker, must receive the names (only) of Club Directors and Delegates as soon as possible (ASAP) for planning purposes of the meeting. The annual meeting will be held at 6:00 p.m. on July 29, 2011. Registration is open one hour prior to the meeting at the SW Washington Fairgrounds, Chehalis, WA. The Credential forms below must be completed by the designated director/delegate, signed by the Club President and Secretary, and **BROUGHT BY THE DIRECTOR AND DELEGATE** to the annual meeting. Or, this should be done by the alternate delegate(s), if necessary. Send the name(s) (not the credentials forms) at least two days prior to the meeting to:

Clara & Del Walker
 12377 SE Davis Loop
 Prineville, OR 97754

Phone: 541-447-7826 (cell: 503-812-6540) or email to dcwalker@embarqmail.com



NFMS DIRECTOR'S CREDENTIALS

Name of Director _____
 Name of Club _____
 City, State _____
 Club President Signature _____
 Club Secretary Signature _____
 Date _____

Must be **completed** and **signed** to be seated with voting rights at the Northwest Federation of Mineralogical Societies Annual Meeting



NFMS DELEGATE'S CREDENTIALS

Name of Delegate _____
 Name of Club _____
 City, State _____
 Club President Signature _____
 Club Secretary Signature _____
 Date _____

Must be **completed** and **signed** to be seated with voting rights at the Northwest Federation of Mineralogical Societies Annual Meeting



NEWS OF INTEREST



Finding Our Way to a Club Lapidary Shop

By Jack L. Edwards
Past President 2004 - 2005

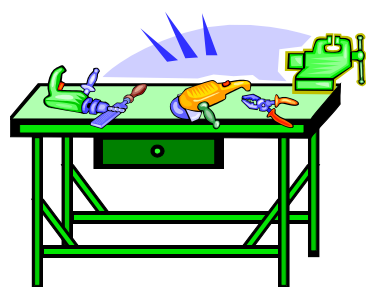
One of the goals of our Marcus Whitman Gem and Mineral Society has been to have a Lapidary Shop.

It has been a long road, but now we have a place for members to learn the lapidary skills. We have been looking at all the normal options for a shop; renting, buying land and building, etc. none of which worked out.

Finally our Club Past President Warren Rood (who I might say was determined to succeed) found the way. It happened like this: Warren is working for the Walla Walla Community College part-time. He talked with people who support the Over 50 Quest Program, and Community Education Program. They were interested in a program that could teach lapidary and other rock related skills. So being Warren he offered to teach the courses, and spent much time negotiating with the College. The final outcome is that we have formed a partnership with the College. They will provide the space for the shop and classes; Our Club will provide the equipment and materials. He was able to insure that the Club could use the facility several times a week. Three of our members (Frank, Olan, and Vern) provided their experience in ordering parts, and material, planning, overhauling the equipment, and installation.

Warren will now teach two classes for the college each week. Both classes filled immediately with a standby list for future classes. Warren will also teach a five week class to Club members who do not have equipment experience. Supervision of the Club nights will be provided by experienced Club members.

I want to thank the NFMS Rock Hound Retreat instructors who have dedicated their time and experience to teaching lapidary skills. A few of our members have attended for several years. Now our new members will benefit from what they have learned. The Rock Hound Retreat continues to be a very valuable part of the NFMS. I hope our future Officers will continue to give it your full support.



Workshops available - based upon signup:

Lapidary, Basic Faceting (Maximum of Six), Silversmithing (Maximum of Eight), Basic Intarsia (Minimum of Four), Basic Wirewrapping, Beading, Casting (Maximum of Six), Doublets & Triplets

The cost to the attendee will be \$270.00 for room and board, \$45.00 for workshop fee and if you desire a guided one day trip to the Fossil Beds, it will cost you \$35.00.

If you take the full package, that will be \$350.00

If you must have an Electric RV hookup (no water or sewer), there will be a \$15.00 charge for the week.

If you need additional info, please call Lamar Tilgner at 503-666-2905 or Email at lstilgner1@frontier.com



Your Official NFMS Directory

By Audrey Vogelpohl
NFMS Directory Chair

The last of the orders for the current NFMS Directory have been either picked-up at the mid-year meeting or mailed via USPS.

Please send to each of us any changes you might see. Ask us to delete names of rockhounds who are no longer members of your club. Provide us with the name, address and telephone number of your new members as they join your club.

This keeps the NFMS official membership list up to date for your members to receive awards and for receiving the newsletter. Your club is not assessed dues for the new members until December 31st. Send the changes to both Tom and Audrey:

Tom Burchard
NFMS Newsletter Circulation
875 E 4500 S
South Ogden, UT 84403
roxhund@aol.com

Audrey Vogelpohl
NFMS Directory
8810 37th Ave SW
Seattle, WA 98126
nfmsdirectory@comcast.net



Program Librarian Address Correction

I am sorry to say there is a mistype of the address of the Program Librarian (Page 3 of 155) in the Standing Committees AND in the Program Library Section of the Directory. The correct address for requesting and returning programs is: Tim and Sharon DeGrie, POB 458, Goldendale, WA 98620. Thank you for making the change in your copy of the NFMS Directory. Their address is correct in the NFMS Newsletter.

NORTHWEST ROCKHOUND RETREAT

Labor Day Week

September 5 through 11, 2011

For a detailed schedule, see the March Northwest Newsletter.

PUBLIC LANDS ISSUES



Public Lands..... By Andy Johnson

PACK IT IN – PACK IT OUT

Having just returned from a journey of 3,000 miles, rock hunting through the states of Washington, Idaho, Oregon and Nevada, one thing which has struck me as being all too common to the Public Lands which I visited and rockhounded upon was litter. Yes let's call this common denominator what it truly is TRASH.

Unbelievably out in the boonies where an encounter with another human is more rare than common I found myself wandering upon the likes of modern day garbage in the form of plastic water bottles and soda containers, plastic bags and in one instance a plastic toothbrush. Bottles and broken glass was quite common as well. Now common sense tells me that the only way that these objects could have gotten where I found them was the result of only one distinct animal, a humanoid devoid of any feelings of stewardship and respect for the environment and the land. In several instances I found myself collecting trash instead of rocks not because I wanted to but because of an innate feeling within that I should and could make a small difference in the environment I was enjoying. There was the satisfaction also knowing that I had done what another had failed to do.

2011 Fee-Free Days Set for BLM-Administered Public Lands

WASHINGTON, DC – The Bureau of Land Management (BLM), in conjunction with other agencies within the Department of the Interior, will waive recreation-related fees for visitors to the National System of Public Lands on the first day of summer, June 21; National Public Lands Day, which is scheduled for September 24; and the Veterans Day holiday weekend, November 11-13. These fee-free days also apply to areas managed within the BLM's National Landscape Conservation System.

BLM Seeks Nominations to Resource Advisory Councils throughout NFMS states

The Bureau of Land Management in **Montana** is seeking public nominations for **16 open positions** on its Western, Central, and Eastern Montana Resource Advisory Councils, which advise the BLM on public land issues. The deadline for nominations is May 2, 2011. Contacts: Contact Mary Apple 406-896-5258

The Bureau of Land Management in **Washington/Oregon** has announced that it is seeking public nominations for 14 open positions on its John Day-Snake and Southeast Oregon Resource Advisory Councils (RACs) Contact: Pam Robbins (503) 808-6306

Bureau of Land Management (BLM) in **Idaho** announced today that it is seeking public nominations for **22 open positions** on its four Resource Advisory Councils (RACs), which advise the BLM on public land issues.

The BLM will consider the nominations until May 2, 2011, which is 45 days after the date the agency published its formal call for nominations in the Federal Register. Contacts: Cheryl Zwang (208) 373-4016

Anchorage --- The Bureau of Land Management (BLM) is calling for applications for its statewide 15-member Alaska Resource Advisory Council (RAC) beginning today. The 45-day nomination period closes April 30, 2011. The BLM seeks qualified individuals to fill five RAC positions in the following categories. The BLM's Resource Advisory Councils (RACs), composed of citizens chosen for their expertise in natural resource issues, help the Bureau carry out its stewardship of 245 million acres of public lands. The Bureau, which manages more land than any other federal agency, has 28 RACs across the West, where most BLM-managed land is located. Each RAC consists of 12 to 15 members with an interest in public land management, including such individuals as conservationists, ranchers, outdoor recreationists, state and local government officials, Tribal officials, and academics. The diverse membership of each RAC is aimed at achieving a balanced outlook that the BLM needs for its mission, which is to manage the public lands for multiple uses. Contacts: Danielle Allen, 907-271-3335 - Thom Jennings, 907-271-3546

Here is an opportunity for our members to make a difference by applying for any of these openings.

2011 Mid Year Meeting Report By Beth Heesacker

The Mid-Year meeting was well attended and a fun time was had by all. Many thanks to the Lakeside Club for hosting us again. They have a wonderful show with fantastic displays and dealers.

I got to see my old friends and make some new ones. And the weather was fantastic. It rained on the way there but both Saturday and Sunday were sunny and a very pleasant break from winter.

The resolutions that will be voted on at the Annual meeting were read so that the directors and delegates could take them back to their respective clubs for discussion and direction on how to vote. They concern Bulleting Aids, the Rockhound Retreat, Credentials, and timing of the Mid-Year meeting. Please review the resolutions carefully and be prepared to vote for the best for the NFMS.

Reports from the various committees were made and questions answered. The NFMS is growing. The hobby of rockhounding is growing. But more lands and areas that once were open to hunting are being closed. This does not look good for the future. Please make your voice heard and support groups such as the ALAA.

Remember the Annual Meeting is coming soon, July 29th. Everyone is welcome to join us at the meeting to see what we are doing and to further discussion on what we can do to best support our hobby.

Information on this meeting is elsewhere in this edition.



NEWS OF INTEREST



Field Trip Updates

by Doug True,
Inter-Regional
Field Trip Chair

WARNING- The Rules for fieldtrips and collecting are changing on public lands.

Actually these rules are for any organized group using our public lands. The rules are open for interpretation, but most districts are saying that if there is a planned trip by two or more people and the schedule of your trip is published or posted, you must apply for a recreation permit.

You must find the local district you are going to collect in, determine if it is run by the BLM or USFS and then request a recreation permit form 2930-1,.

In the application you will have to furnish maps (topographical, a written plan of your function, area you are camping and what you are collecting, and the estimated number of attendees. You will also be required to show a certificate of insurance naming the BLM or USFS as insured. In some cases they may require you to supply Porta Potties.

In your report you should indicate the specific areas where you plan on collecting and indicate if you will be digging or surface collecting. You have a much better chance of getting a permit if you plan on surface collecting. If you're digging, the selected area will be scrutinized by a number of different departments: Archeological, Paleontology, Endangered plants, etc, etc.

After a revue of your proposal, all or part of your request might be turned down. You need to work with the recreation officer and plan your trip together as this gives you a better chance of being successful. In talking with different BLM districts their numbers seem to vary as to what constitutes a group. There will also be a processing fee of around \$100 dollars. If you are planning a trip to public lands, **please check to see if your group trip is good to go.**

Via AFMS Newsletter 5/11



Having Fun: Junior Activities by Jim Brace-Thompson, Jr. Activities Chair

Exciting New Developments with our FRA Program!

I'm pleased to report on many exciting new developments with our FRA program thanks to the suggestions and interest of participating clubs. Last month, I reported how Patricia Egolf of the Gem & Mineral Society of Syracuse suggested we explore a "Rock Pals" program whereby the juniors groups of AFMS-affiliated clubs might collect local rocks, minerals, or fossils, package them in a flat-rate postage box, and exchange them for rocks with other juniors clubs. A half dozen clubs spread out across the U.S. have expressed interest, so I'll be assisting Patricia in making "Rock Pals" a reality.

In addition, Steve Veatch of the Colorado Springs Mineralogical Society and the Lake George Gem & Mineral Club has suggested we institute a procedure to facilitate communication among youth leaders whereby we could all discuss what we're doing with the kids in our clubs, what's working, what's not, best practices, etc. We've decided that establishing a blog might be the way to go, and Steve has volunteered to set one up and maintain it at zero cost to the Federation. Once this is established, Steve and I'll provide an alert on accessing the blog and how local clubs can participate.

Speaking of enhancing communication and sharing best practices, I've been invited by the AFMS Show committee in Syracuse to host a "junior activities discussion forum." Rather than go it alone, I've invited Darryl Powell (also known as Diamond Dan) to co-host it with me. Time and room to be announced, but it looks like it may take place 4PM Saturday of the AFMS Show. We invite anyone with an interest in juniors' activities who will be in Syracuse to share in what we hope will be a lively, informative discussion.

Finally, when I established the FRA Badge Program in 2004, my plan was to update and enhance it every four years. We went from 9 activity badges and the Rockhound badge in 2004 to 15 activity badges in 2008 and a recently added Rock Star pin.

With 2012 quickly approaching, I've been surveying clubs using the program. I've presented 9 new ideas, asking everyone to vote on their top 3 to 5 choices. With votes still coming in, it's not official yet, but so far the top vote-getters are Fluorescent Minerals, Special Effects, Honoring Senior Members in Your Club (or Reaching Across Generations), The World of Miniatures, and Maps. Thus, I'll be presenting a proposal at our July AFMS meeting to fund 5 more badges to provide more challenges to kids who have already earned the 15 existing badges and to provide junior leaders with an every-widening pool of ready-made activities from which to choose in educating kids, while having fun! Via AFMS Newsletter 5/11

NFMS Member Clubs - Gem and Mineral Show Calendar

April 30 - May 1 Sat 10 - 5, Sun 10 - 5	West Seattle Rock Club	Alki Masonic Temple, 4736 40th Ave SW, Seattle, WA	Audrey Vogelwohl, 206-932-3292, avogelwohl@comcast.net www.westseattlerockclub.org
May 7 - 8 Sat 10 - 6, Sun 10 - 4	Bozeman Gem & Mineral Club	Gallatin County Fairgrounds 901 North Black, Bozeman, MT	Sally Griffin 406 451 4362 griffin830@yahoo.com or Dan Carter 406 586 4552
May 14 - 15 Sat 9 - 5, Sun 9 - 4	The Bitterroot Gem and Mineral Society	First Interstate Events Center, Ravalli County Fair Grounds, 100 Old Corvallis Road Hamilton, MT 59840	Steve Vieth, 406-369-5489 viethsteve88@gmail.com or Mike McConnell, 406-360-4944 micker1949@yahoo.com
May 21 - 22 Sat 10 - 6, Sun 10 - 4	Hatrockhound Gem & Mineral Society	Hermiston Conference Center, 415 S. Hwy 395, Hermiston, OR	Mike Filarski, Show Chairman, email: stonemorlin1@netscape.net

NFMS Member Clubs - Gem and Mineral Show Calendar (cont.)

June 3 - 5 Fri 12 - 5, Sat - 10 - 5 Sun 11 - 4	Puyallup Valley Gem and Mineral Club	Fruitland Grange 11102 86th Avenue East Puyallup WA 98373	Nancy LeMay 253 952 6212 bees2knees@att.net or puyallupgemclub.org
June 11 - 12 Sat 10 - 6, Sun - 10 - 6	Butte Mineral & Gem Club	Butte Civic Center Annex 1340 Harrison Avenue (ext 127 North) Butte, MT	Pete Knudsen, 406-496-4395 PO Box 4492, Butte, MT 59702
June 18 - 19 Sat 10 - 6, Sun 10 - 4:30	Oregon Coast Agate Club, Rock'n The Coast - 48th Annual Rock and Mineral Show	Yaquina View Elementary School Multipurpose Room, 351 SE Harney St. (just off Hwy 20, south at the light), Newport, OR	K. Meyer 541 265 2514 (Mon-Sat 10-5 PST), PO Box 293 Newport OR 97365
July 7-10	AFMS AND EFMLS ANNUAL MEETING	New York State Fairgrounds, Syracuse , NY	http://www.amfed.org/show2011.htm for more information
July 15 - 17 Fri 10 - 6, Sat 10 - 6 Sun 10 - 4	Lower Umpqua Gem & Lapidary Society	Reedsport Community Building 415 Winchester Avenue, Reedsport, OR 97467	Bill Hendrickson 541 271 6816 100 River Bend Road, Spc 17 Reedsport, OR 97467
July 23 - 24 Sat 9 - 6, Sun 9 - 5	Washington Agate and Mineral Society	Parkside Elementary School, on Stage Street South (take I-5 exit 88), Tenino, WA	Daniel De Boer keylock1@live.com 5107 Brenner Rd NW Olympia, WA 98502
July 23 - 24 Sat. 10 - 6, Sun. 10 - 4	Northwest Montana Rock Chucks - 4th Annual Gem and Mineral Show	Flathead County Fairgrounds - 265 N. Meridian Rd., Kalispell, MT	Milah Gano 406-844-3560 mallard_g@centurytel.net Jim or Vi Hoover 406-862-1316
July 29 - 31 Fri 10 6, Sat 10-6, Sun 10-5	NFMS ANNUAL MEETING AND SHOW	Southwest Washington Fairgrounds, Chehalis, WA	Chuck Sonner csonner2011@gmail.com
August 5 - 7 Fri 10 - 5, Sat 10 - 5 Sun - 10 - 4	Far West Lapidary & Gem Society	North Bend Community Center 2222 Broadway, North Bend, OR	Don Innes 541 396 5722 donin11@hughes.net PO Box 251 Coos Bay OR 97420
September 10 - 11 Sat 10 - 6, Sun 10 - 4	Umpqua Gem and Mineral Club "OREGON REALLY ROCKS"	Douglas County Fairgrounds, 1-5 Exit 123, Roseburg, OR	Eileen Paul (541)672-5229 beadpatch@cmspan.net
September 10 - 11 Sat 10 - 5, Sun 10 - 5	Marcus Whitman Gem & Mineral Society	Walla Walla County Fairgrounds Community Ctr, 9th Street and Orchard, Walla Walla, WA	Warren Rood 509 522 2330 warrenrood@yahoo.com
September 17 - 18 Sat 10 - 6, Sun 10 - 4	Southern Washington Mineralogical Society	Castle Rock Fairgrounds, A Street and Cowlitz River, Castle Rock, WA 98611	Jackie Furuli 360 431 0059 jfuruli@yahoo.com or Dave Furuli 360 430 4092
September 24 - 25 Sat - 9 - 6 Sun - 10 - 5	Hellgate Mineral Society	Ruby's Inn and Convention Center 4825 North Reserve Street Missoula MT	Bob Riggs 406 543 3667 14 Holiday Lane Missoula MT 59801
October 7 - 9 Fri 10 - 5, Sat 10 - 5 Sun 10 - 2:30	Clallam County Gem & Mineral Association (CCGMA)	Boys & Girls Club, 400 West Fir Street Sequim, WA	Terry Stockman, terlin@wavecable.com PO Box 98 Sequim, WA 98382 or Foster Thompson fostert@olympen.com
October 8 - 9 Sat 10-5 Sun 10-5	Marysville Rock and Gem Club	Totem Middle School Cafeteria, 7th Street & State Avenue, Marysville, WA	Bill Moser 425-238-8222 bill- jj@comcast.net or George Haage 425-339-2272 haag@frontier.com
October 15 Sat - 9 - 4	Eureka Rock and Gem Club	Senior Citizen Center, 1000 North 3rd East Mountain Home, ID	Margaret Stallknecht 208 740 0937 mestallknecht@yahoo.com
October 15 - 16 Sat 10 - 6, Sun 10 - 5	Hells Canyon Gem Club	Nez Perce County Fairgrounds 1229 Burrell Avenue, Lewiston, ID 83501	Rick Westerholm 208-746-2101 PO Box 365 Lewiston ID 83501
October 22 - 23 Sat 9 - 6, Sun 10 - 5	Clackamette Mineral & Gem "Rock & Gem Heaven in 2011"	Clackamas County Fairgrounds 694 NE 4th Avenue, Canby OR 97013	Rick Mauer 503-691-6395 tallerricardo@juno.com or Bea Settle 503-631-3128 rockhound@clackamettegem.org
October 22 - 23 Sat 10 - 5, Sun 10 - 5	Bellevue Rock Club	Vasa Park, 3560 West Lake Sammamish Blvd SE, Bellevue, WA. Take Exit 13 off I-90, 1 mile north	Bruce Himko, PO Box 1851 Bellevue, WA 98009-1851 Bellevuerockclub@comcast.net www.bellevuerockclub.org
November 11-13 Fri 10 - 5, Sat 10-5 Sun 10-4	NW Opal Association and The Cascade Mineralogical Society	Expo Hall, Puyallup Fairgrounds Meridian St. S and 9 th Ave SW Puyallup, WA	206-283-4205 253-630-8413 425-483-0557
November 19 - 20 Sat 10 - 5, Sun 10 - 5	Kitsap Mineral and Gem Society	Kitsap County Fairgrounds, President's Hall 1200 NW Fairgrounds Road Bremerton WA 98311	Jim McClure pogy2@centurytel.net 253-265-3011, www.kmgs.org

