



NORTHWEST NEWSLETTER



Northwest Federation of Mineralogical Societies
Tom Burchard, Circulation
875 E 4500 S
S Ogden, UT 84403-2913

VOLUME 52, NO. 4 Northwest Federation of Mineralogical Societies JAN/FEB 2012



**Judi Allison
President**

It certainly is amazing how rapidly time passes. It seems that as we get older it runs by at an even faster pace. That being said, the New Year is upon us, and we will soon be attending the Annual Show and Convention in Kennewick, Washington. May 18th will be here before we even have time to blink. The Lakeside Club has been busy getting ready to give you a great time "Rockin' in the Country". So be

sure to mark your calendars and plan to take in the activities and enjoy the hospitality that will be served up. I purchased the geode I am holding in the picture from a dealer who will be at the show.

Since the convention is a bit earlier this year, and since there is no pressing business to consider for review, we will waive the mid-year meeting for 2012. We will look forward to seeing individual club's directors and delegates at the annual meeting to be held on May 18th at 4:00 pm.

Since we are now into 2012, I urge all you to check any deadlines for contests, entries or whatever other activity you are considering. Possible entries can be for the All American Club Award, Website Contest, Editor's submissions for the newsletter, Junior Award, or a competitive display.

A while back I reported about the different awards available to individuals who put in displays at a Federation show. I need to correct some information, as Lyle, who is much more informed than I, gave me some current information. The Darrell Dalton Memorial Trophy that was mentioned before was cancelled in February of 2007. There is an additional award available to Juniors entitled the Lucille Lindner Junior Achievement Award. Please note these two changes to the previous information.

An additional piece of information I want to pass on is that, although I mentioned that we do not currently have any resolutions, the deadline for presenting one is not until February 18 (three months prior to the May 18 meeting). Please keep this in mind if you are considering submitting anything. Don't let time get away from you. Act now and take the pressure off any impending deadlines. And, while you're at it, take time to cut a rock, make a bead, grind a stone, facet a gem or whatever thing that brings you to our hobby in the first place.

Until next time, take care.

Mark Your Calendars:



2012 NFMS Annual Meeting
May 18-20
Hosted by Lakeside Gem and Mineral Club
Benton County Fairgrounds,
Kennewick, WA

2013 NFMS Annual Meeting
August 16-18
Hosted by Butte Mineral and Gem Club
Butte Civic Center, 1340
Harrison Ave.
Butte, Montana

2014 NFMS Annual Meeting
Hosted by Hatrockhounds
Gem and Mineral Society
in Pendleton, OR

A HAPPY
NEW YEAR

What's Inside:

President's Report	1
Juniors' Achievement Award and Application	3
Juniors Report	4
Bulletin Aids Report	4
Endowment Report	4
Editor's Rockpile	4
Judges training and Application	5
All American Award	6
Multi-Federation Field Trip	6
Video Library	6
Conservation and Legislation Committee appointment	6
Rice Museum Curator	7
Website Contest	7
NFMS Show and Meeting	8-11
Ticket2Adventure	12
Land Use	12
AFMS News	13
Hints for the New Year	14
Special Rockhound Retreat Report	15
Rock ShowCalendar	16

THE NEXT NFMS NEWSLETTER WILL BE IN MARCH. MARCH NEWSLETTER ARTICLES ARE DUE ON FEBRUARY 15th

Contact
Beth Heesacker
Email: nfmseditor@coho.net

NFMS Website:
www.amfed.org/nfms

Non-Profit Org.
U.S. Postage Paid
Butte ID 83318
Permit No. 9

NFMS EXECUTIVE OFFICERS 2010-2011

PRESIDENT: Judi Allison, Hatrockhounds Gem & Mineral Society, 1701 NW 11th #A, Hermiston, OR 97838, (541) 720.4950, jall@eotnet.net

1st VICE PRESIDENT: Kathy Moedl, Idaho Falls Gem and Mineral Society, 149 E. 1st N, Rexburg, ID 83440, (208) 356-4169, kmoedl@cableone.net

2ND VICE PRESIDENT: Don Innes, Far West Lapidary, 54416 Arago-Fishtrap Rd., Myrtle Point, OR 97458, (541) 396-5722, donin11@hughes.net

EXECUTIVE SECRETARY: Joan Day, Golden Spike Gem & Mineral Society, 509 Highland Blvd., Brigham City, UT, 84302, (801) 391-2912, joanday@sisa.com

TREASURER: Lyle Vogelpohl, West Seattle Rock Club, 8810 37th Ave. SW, Seattle, WA 98126-3617, (206) 932-3292, nfmstreasurer@comcast.net

NFMS STANDING COMMITTEES

BUDGET: Kathy Moedl, 1st Vice President (see above)

BULLETIN AIDS: Peggy Blickfeldt, Idaho Gem Club, 236 Tollgate Rd., Boise, ID 83716, (208) 345-8774, grumpies@q.com

CIRCULATION: Tom Burchard, Golden Spike Gem & Mineral Society, 875 E 4500 S, S. Ogden, UT 84403, (801) 479-4286, Roxhund@aol.com

COMPETITIVE EXHIBITS:

EXHIBITS REGISTRAR: Dee Holland, Bitterroot Gem/Mineral Soc, Hamilton, MT, P.O.Box 23, Tendoy, ID, 83468, (208) 756-2394, beauholland@centurytel.net

JUDGING DIRECTOR: Carol Cimolino, Everett Rock and Gem Club, 1429 Avenue D, PMB 518, Snohomish, WA 98290, (360)668-0378

RULES & AWARDS CHAIR: Larry Hulstrom, Lakeside Gem and Mineral Club, Kennewick, WA, 5409 W 26th, Kennewick, WA 99338, (509)783-6210, rockhound132@charter.net

CREDENTIALS: Del & Clara Walker, Tualatin Valley Gem Club, 12377 SE Davis Loop, Prineville, OR 97754, (541) 447-7826, dwalkerk@embarqmail.com

CUSTODIAN: Don Innes, 2nd Vice President (see above)

DIRECTORY: Carol Willey, Oregon Coast Agate, 929 Ojalla Rd., Siletz, OR 97380, (541)444-1360, going4rocks@dishmail.net

EDUCATION: Jim & Libby Spencer, Clackamette Mineral & Gem Society, 660 Collins Crest, Gladstone, OR 97027, (503) 650-5027, the_spencers@comcast.net

ENDOWMENT FUND: CHAIRMAN: Edna Nelson, Mt Hood Rock Club, 66830 Maple Crest Rd., Deer Island, OR 97054, (503) 397-5284, rockhoundstoo1966@yahoo.com
TREASURER: NFMS Treasurer (see above)

FINANCIAL ADVISOR: Jon Spunaugle, 4841 Doctor Eldridge Dr., Washougal, WA 98671, (360) 624.7604, jonspe@comcast.net

HISTORIAN: Shirley Leeson, Bitterroot Gem/Mineral Soc, Hamilton, MT, P.O. Box 23, Tendoy, ID., 83468-0023, (619) 460-6128 or (208) 756-2394, beauholland@centurytel.net

JUNIORS CHAIR: Audrey Vogelpohl, West Seattle Rock Club, 8810 37th Ave. SW, Seattle, WA 98126-3617, avogelpohl@comcast.net

NEWSLETTER EDITOR: Beth Heesacker, Clackamette Gem & Mineral Corp., 4145 NW Heesacker Rd., Forest Grove OR, 97116, (503) 357-8804, nfmseditor@coho.net

NFMS Club-at-Large: 1st Vice President (see above)

NOMINATING CHAIRMAN: : Fritz Mack, Everett Rock & Gem Club, 10619 Holly Dr., Everett, WA 98204, (425) 513.0115, rockngem_mack@comcast.net

NORTHWEST ROCKHOUND RETREAT (Hancock):

Lamar Tilgner (Chair), Mt. Hood Rock Club, 200 SE Olvera Ave., Gresham, OR 97080, (503) 666-2905, lstilgner1@verizon.net

PAST PRESIDENTS COUNCIL: Evelyn Cataldo, Lakeside Gem & Mineral Club, 99509 Brandon, Kennewick, WA 99338, (509) 628-0170, ecataldo@cbtbs.com

PUBLIC LANDS ADVISORY: Andy Johnson, Lakeside Gem & Mineral Club, P.O.Box 3251, Pasco, WA 99302, (509)546-1950, washatonian2@hotmail.com

SLIDE/ VIDEO LIBRARIAN: Tim and Sharon DeGrie, Lakeside Gem & Mineral Club, P.O. Box 458 Goldendale, WA 98620, 509-772-2533, cell 509-910-9228 ROCKNlibrarian@yahoo.com

RESOLUTIONS: Fred Burton, Golden Spike Gem & Mineral Society, 90 Lakeview, Tootle, UT 84074, (435)882-8614, fburton@trilobyte.net

SAFETY: Chuck Sonner, Southern WA. Mineralogical Society, 165 Tingle Rd., Winlock, WA. 98596, (360) 785-3909, chuckagate2@yahoo.com

SCHOLARSHIP: Rose Alene McArthur, Hells Canyon Gem Club, 14 Debertin Drive, Orofino, Idaho, 83544, (208) 476-3840, obmcarthur@cpintern.com

SHOW CHAIRPERSON 2012: Larry Hulstrom and Evelyn Cataldo, Lakeside Gem and Mineral Club, 5409 W. 26th, Kennewick, WA, 99338, (509) 783-6210,

SHOW COORDINATION: Pat Lambert, Lakeside Gem & Mineral Club, 26106 S. Oak, Kennewick, WA 99337, palambert@charter.net

STAMPS: Hermina Kolski, Club-at-Large, 208 Riverview 2 East, Great Falls, MT 59404-1534, (406)231-0620

SUPPLIES: Tim Hoff, Butte Mineral & Gem Club, 1016 Waukesha Ave, Butte, MT., 59701, (406) 491-3587, nwfm_timhoff@bresnan.net

WAYS & MEANS: Janice Van Cura, Willamette Agate & Mineral Society, Inc.3448 NW Covey Run, Corvallis, OR 97330 (541)753-2401, jvancura@peak.org

WEBMASTER: Bryan Schroeder, Lakeside Gem and Mineral Club, 153 Spring St., Richland, WA, 99352, (509)371-1572, bryant1939@gmail.com

NFMS WEB SITE: www.amfed.org/nfms

NFMS SPECIAL COMMITTEES

FIELD TRIP CHAIRMAN: Doug True, Billings Gem & Mineral Club, 2622 Broadwater, Billings, MT 59102, 406.670.0506, dtruefossils@yahoo.com

ROCKHOUND OF THE YEAR: Viola Jones, Skagit Rock & Gem Club, P. O. Box 2841, Mt. Vernon, WA. 98273, (360) 424-8340, rocks1x1vi.george@frontier.com

WEBSITE CONTEST: Cheri George

AFMS COMMITTEES (NFMS Representatives)

AFMS PRESIDENT-Lauren Williams, ENDOWMENT FUND- Edna Nelson, **EDITORS HALL OF FAME-Open, NEWSLETTER EDITOR-**Beth Heesacker, **NFMS CLUB BULLETIN AIDS-**Peggy Blickfeldt, **ROCKHOUND OF THE YEAR-**Viola Jones, **CONSERVATION & LEGISLATION-**Darlene Posthuma, **EDUCATION-ALL AMERICAN AWARD-** Jim & Libby Spencer, **INTERNATIONAL RELATIONS-**Bill and Janet Smith, **JUNIORS PROGRAM-Open, PROGRAM COMPETITION-Open, PUBLIC RELATIONS-OPEN, SAFETY-**Chuck Sonner, **SCHOLARSHIP FOUNDATION-**Dee Holland & Rose McArthur, **SUPPLIES AND PUBLICATIONS-**Tim Hoff, **JUDGE TRAINING COMMITTEE-**Dee Holland, **UNIFORM RULES-**Dee Holland (Director), **WAYS AND MEANS-**Glenn Lee (chair) & Janice Van Cura, **WEBSITE-**Bryan Schroeder.

THINGS YOU SHOULD KNOW

The **AMERICAN LANDS ACCESS ASSOCIATION (ALAA)** is a 501(c)(4) organization. Its purpose is to promote and ensure the right of amateur hobby fossil and mineral collecting, recreational prospecting and mining, and the use of public and private lands for educational and recreational purposes; and to carry the voice of all amateur collectors and hobbyists to our elected officials, government regulators and public lands managers. Your annual individual membership fee of \$25.00 helps support their activities. Club membership is \$50 per year. Send dues to: ALAA, Ruth Bailey, 2857 Addison Pl, Santa Clara, CA 95051-1705 For more information contact: Shirley Leeson, ALAA Vice President, P.O. Box 23, Tendoy, ID, 83468, shirleyleeson@cox.net or beauholland@centurytel.net

The **AFMS NEWSLETTER** is published monthly except Jan-Jul-Aug by the American Federation of Mineralogical Societies. Each NFMS member club should have three people (usually the Pres, Secretary, and Editor) receiving the AFMS Newsletter. If they are not, or if anyone else wants to subscribe (\$4.50 per year). Contact: AFMS Central Off., Steve Weinberger, P.O. Box 302, Glyndon, MD 21071-0302 cebar62@aim.com Make checks payable to "AFMS".

The **NORTHWEST NEWSLETTER** is the official publication of the Northwest Federation of Mineralogical Societies (NFMS) and is usually published ten (10) times per year. This publication is brought to you through your club membership in NFMS. The purpose of the Northwest Newsletter is to keep all NFMS members informed of activities and events pertaining to the business and services of the Federation. The Newsletter is printed and mailed to approximately 3500 homes in six states by Burley Reminder in Burley ID. For matters related to the Newsletter (i.e. content, advertising, etc) contact the **Newsletter**

Editor. For matters related to the Newsletter circulation (new members, address changes, etc.) contact **Circulation**.

SHOW COORDINATION. Your Federation provides a free service for NFMS members by listing your show in this Newsletter, on the NFMS website, two magazines ("Rocks and Minerals" and "Rock and Gem") and the on-line Calendar from "Lapidary Journal". Please provide the date and time for the show, the club name and show title (if applicable), the location of the show, and most important a contact person with address, e-mail address and/or phone (e-mail is preferred). Please send your show information four to six months in advance to the **Show Coordination** Chairperson. If you see an error once your show is listed, or if your show is not listed, contact the **Newsletter Editor**.

SAVE STAMPS PROGRAM. NFMS members are encouraged to use and save commemorative stamps. The money generated from the sale of these used (cancelled) stamps is then donated to Cancer Research. The collected stamps can be sent to the **Stamps Chairman**, brought to the NFMS Annual Show or given to your Federation Director in your club.

ATTENTION CLUB TREASURERS**Where to send your money**

To NFMS Treasurer for:

1. Dues and supplies
2. Donations for the general fund
3. Donations to Junior Achievement
4. Advertisement in this Newsletter

Send to: Lyle Vogelpohl, see Treasurer this page.

To NFMS Endowment Fund Treasurer for:

1. Donations to Endowment Fund
2. Memorial contributions

Make check payable to NFMS Endowment Fund, send to Endowment Fund Treasurer.

To NFMS Scholarship Chairperson for:

1. Donations to AFMS Scholarship Fund
2. Memorial contributions to AFMS Scholarship

Make check payable to **AFMS Scholarship Fund**.
Send to: Rose Alene Mc Arthur (see Scholarship this page).

To AFMS Endowment Fund for:

1. Donations to AFMS Endowment
2. Memorials

Send to: See AFMS Newsletter

To ALAA Treasurer for:

1. Memberships, new and renewals
2. Donations

Make check payable to ALAA
Send to Joyce Hanschu, ALAA Treasurer, 6607 Sturbridge Ln; Canton, MI 48187-2638

NFMS NEWSLETTER AND WEBSITE ADVERTISEMENT

Members, Non-members, clubs, etc. can advertise in the Northwest Newsletter. This service is provided to help defray the cost of printing and mailing the newsletter and is encouraged by the Federation. The only criteria for the ad is that it be hobby related (e.g. rocks, equipment, grit, shows, etc.).

Ads for the Northwest Newsletter are \$1.50 per square inch.

Example: 3" x 4" ad = 12 inches

12 inches x \$1.50 = \$18 per issue of the Newsletter
For an additional 50% of the cost of the Newsletter ad, you can have the same ad placed on the NFMS website for the same length of time. The Newsletter ad must be purchased to receive this additional advertisement.

Do not send ads on colored paper because the back-ground will look gray in the ad. The Editor will send a billing statement to the customer which will include instructions to make payment to the NFMS Treasurer. For more information or questions, call, e-mail or write the **Newsletter Editor**

To see this newsletter in living color and to see it by the first of the month go to
<http://www.amfed.org/nfms/newslet2.htm>
and click on the month you want to see.

COMMITTEE REPORTS



NFMS Junior Achievement Award by Audrey Vogelpohl NFMS Juniors Chair

It is time for Junior Rockhounds to consider being famous this year, and win money. You must be a paid up member of your Club and the NFMS. Your age determines if you enter the age 12 and under category or the age 13 to 18 category. The applicant must not have had an 18th birthday prior to April 1st; but the applicant can turn 18 between April 1st and the presentation of the awards. Bottom line is that your Resume and Application together require a postmark by April 1, 2012. Winners will be notified a month later, after the NFMS Judges vote on each candidate's Summary. If any of this sounds too complicated or if

you have any questions just contact me at nfmsjunior@comcast.net OR ask your Juniors Advisor, parent or the Federation Director of your Rock Club, everyone will be delighted to help you in the quest of achieving fame.

Here are your three EZ steps:

- 1. Write or type a short summary (resume/outline) about what your achievements are for the past 2 years (2010 and 2011), following Sections I, II, III & IV from the GUIDELINE below.**
- 2. Photocopy the APPLICATION from the Northwest Newsletter. Fill out the APPLICATION and have your Rock Club representatives sign their spaces.**
- 3. Mail with a postmark by April 1st, 2012, your summary (resume/outline), and completed APPLICATION to the NFMS Junior Committee Chair,**

Audrey Vogelpohl
8810 37th Ave SW
Seattle, WA 98126

NFMS is looking forward to giving out some money awards this year.



10 points

Guidelines for Junior Achievement Award

Section I. HOBBY RELATED (Possible 45 points)

- Club involvement (field trips, committees, show participation)
20 points
- Hobby Craft involvement (faceting, lapidary, metals, collecting)
20 points
- Competitive involvement (display, articles, promotion, awards)
5 points

Section II. EDUCATIONAL ACHIEVEMENT (Possible 25 points)

- Scholastic (honor roll, advanced classes, improvement of grades)
15 points
- Extracurricular (sports, drama, debate, drill team, music)
10 points

Section III. COMMUNITY ACHIEVEMENT (Possible 20 points)

- Events involvement (charity, volunteer, donation programs)
10 points
- Scouts, Campfire, 4H-Club, Other community groups
10 points

Section IV. WORK RELATED (Possible 10 points)

- Employment, Home Chores, Neighborhood Work, Business

APPLICATION--Junior Achievement Award (confidential info)

Applicant Name _____
 Your Date of Birth _____ Age _____
 City _____ State _____ Zip Code _____
 Phone # and Email _____

Applicant's SignatureX _____ Date _____

Rock Club Name _____
 Name of Junior Advisor _____

**The following Club Officials attest to the applicant
being a paid up member of the Club and NFMS
Federation Director**

Name _____

Federation Director SignatureX _____

President Name _____

President SignatureX _____

**Mail your SUMMARY (resume/outline) & APPLICATION to:
Audrey Vogelpohl, NFMS Juniors Chair
8810 - 37th Ave SW, Seattle, WA 98126-3617
(Please be sure to postmark by APRIL 1st --Thank You!)**

COMMITTEE REPORTS



Focus on our Future, the Juniors !

At the NFMS Annual meeting, a vote was taken to purchase for every member Club and Society of the NFMS a 2-year subscription to the monthly publication, *Mini Miners Monthly*. "Mini Miners Monthly" is published by Darryl Powell through his publishing business, Diamond Dan Publications. Darryl is a

life-long mineral collector, a graduate of The University Rochester (BS, Geological Sciences), and has been publishing coloring and activity books about minerals for 18 years.

There is no other publication like it for young mineral enthusiasts. Throughout the year you will receive interesting articles about minerals, crystals, and mineral collecting. "Mini Miners" will bring to you fun activities (like crossword puzzles, word searches, cut-and-fold crystal models, coloring pages) for fun learning. There will be crystal drawings to color, interviews with important mineral collectors of our day, and always suggestions on how to build and take care of a mineral collection.

What benefits will this bring to your club?

Mini Miners Monthly is a resource for your educational purposes. With this subscription, you receive permission to reproduce up to 6 pages per month in your monthly newsletter (attention bulletin editors: here's some quality, educational and fun material to help you in your newsletter publishing endeavors!), on your website and for use at meetings and shows. The purpose and goal of "*Mini Miners Monthly*" has always been to support the growth of children's programming in the AFMS clubs and societies. Since you are receiving this resource, *please make full use of it!* The NFMS is providing this for you to give you a tool for success in the development and growth of your Junior programs. (And trust us, adults like this material, too!)

What do I have to do?

We are in the process of compiling email addresses from the NFMS member clubs. "*Mini Miners Monthly*" will be emailed to your club each month as a PDF file. Darryl would like to email it to the following people in each club and society: the President, the Newsletter editor and the Juniors' Program leaders. Much of this information will be gleaned from the NFMS club and society profiles. However, if you are concerned that the right people receive this resource, please email Darryl Powell directly at diamonddan@rochester.rr.com with names and email addresses. If, at any time in the coming two years, you want or need to change or add recipients, please let Darryl know by email. It is our intention that each member club and society gets the fullest use it can out of this creative and helpful resource.

Thank you for your efforts in educating our communities, and especially our children, about the wonderful world of minerals and mineral collecting. It is our belief that providing this resource for you will ultimately benefit you, your club and your community.



Peggy Blickfeldt Bulletin Aids Chair

Well, it is getting that time again to send your entries in to the Bulletin Aids Contest. The deadline is Jan. 31, 2012. With each entry you must send a score sheet with the top filled in. Go to the AFMS website Home page and scroll down to 2011 Bulletin Editor Contest.

Read the Guide lines for your particular entry then scroll down to the score sheet section. Pull the one you want up and fill out the top on line then print it out and send it with your entry. We cannot judge entries without this score sheet.

If you have any questions please email me at pblick@ymail.com I will email you back or if you need to talk to me call at 208-345-8774. I am sometimes hard to reach so leave a message and I will call you back.

We got twelve entries last year, I would like to see that double this year. Good luck to all of you.



Chris Blickfeldt Endowment Chairman

This year there are two drawings. One drawing has four machines from Hi Tech. They are

1. Cab King-6V3 \$1,500.00
2. Slant Cabber Machine \$600.00
3. All you need machine \$490.00
4. 6" Trim saw \$440.00

If you want to put a ticket in the drawing for a machine, the ticket must have the number of the machine you want on the back of it. That's four drawings for machines.

These tickets will not be in the regular drawing for the other fabulous prizes that they have every year. Tickets are \$5.00 or 5 for \$20.00. This money is for a good cause and it helps keep our hobby alive.



From the Editor's Rockpile By Beth Heesacker

The beginning of a new year. How time seems to fly. In a couple of weeks we will be heading to Italy to see our son, daughter-in-law and our 2 grandboys. While we are there we will be rockhounding including going on a field trip with a geologist from over there on the Island of Sardinia. The island is a beautiful place with lots of geologic history and fantastic rock formations.

The last time we were there, 3 years ago, we found petrified wood and a petrified pine cone. This year we hope to find more and also concentrate on my new fascination, micro-mounts. I will, of course report back to you on my findings. Until then, may you all have a Happy New Year! God bless!!!

JUDGES' TRAINING



Judges' Training Seminar

For those of you in the NFMS interested in joining us at the first regional AFMS Judges Seminar, May 10-13, 2012 in RENO, NEVADA, the application for the event is included this month. Note there are deadlines, Last month's front page information on the Seminar and what it's about has two changes. Mentioned was a second application from the Reno club regarding camping and an application to exhibit. We have decided, because of space to just have the Judges Training

Seminar application, if you are interested in camping you must contact the Reno Livestock Events center at the number listed at the bottom of the application. Staying at the hotel? Then you have to contact them yourself and make your reservation, see what to tell them and number on application form. Want to exhibit and have your exhibit evaluated? Mark yes, and I'll contact you for further information. PLEASE DON'T WAIT TILL THE LAST MINUTE. The hotel, the club and I have to know in advance how many we can expect to attend.

Dee Holland, AFMS Judges Training Chair 2011
beauholland@centurytel.net

AFMS JUDGES TRAINING SEMINAR

Thursday May 10 – Sunday, May 13, 2012
Sparks (Reno) Nevada, Holiday Inn
55 E. Nugget Ave, 1-775-358-6900

DEAD LINE: APRIL 16, 2012

This program/seminar is for judges and exhibitors, sponsored by the AFMS. This is the first of three authorized seminars to be held in the next three years in different Regions each year, and set up in conjunction with a local club and their show. Please fill out the application below and return to:

Dee Holland, AFMS Judges Training Chair, P.O. Box 23, Tendoy, ID 83468

PLEASE PRINT

NAME _____

ADDRESS _____

CITY _____ STATE _____ ZIP _____

EMAIL _____

REGIONAL FEDERATION _____

CLUB/SOCIETY _____

DIVISION YOU ARE INTERESTED IN

OPEN ___ MINERAL ___ LAPIDARY ___ JEWELRY ___ EDUCATION ___

FOSSIL ___ PETRIFIED WOOD ___ SCRIMSHAW ___ BEADING ___ UV ___

YOU MUST HAVE AN AFMS RULES BOOK, updated to 2012

CLASS SCHEDULE

Thursday evening, 7pm, Holiday Inn Orientation Session

Friday & Saturday 9 – 5 CLASSES (Lunch on Premises)

Sunday Morning 9am Reno Events Center, 1350 N. Wells Ave

Evaluation of exhibits -- Evaluation of the program immediately following

There is a \$20. charge for the class for everyone, this includes lunch Fri & Sat.

Make check out to: Dee Holland and this must accompany the application

If you are staying at the hotel, YOU MUST MAKE YOUR OWN RESERVATION

Two Queen or One King room, \$75. including tax, etc per night

Tell hotel it is the AFMS Judges Training Seminar.

DO YOU PLAN TO STAY AT HOTEL? _____

Camping at Reno Livestock Events Center? _____

Dry Camping: Contact direct: 775-688-5751

I'm bringing an exhibit for evaluation _____

COMMITTEE REPORTS



All American Club Awards

by Jim and Libby Spencer

It is that time again. We are fast approaching submission time for the 2011 All American Club Awards. We hope your club already has a good start on its submission but if not, it isn't too late. We think that the All-American Club Award is

a wonderful opportunity for clubs to share their exciting activities and achievements. It was established to encourage clubs to share their activities and expertise with other clubs within their respective regions and with the clubs of the America Federation of Mineralogical Societies. It was also meant to provide an organized approach to an historical record of a club's activities, and provide a means for national recognition of these exceptional clubs.

The application for the Award can be downloaded from the AFMS website (www.amfed.org). There is also an application guide that will help you with tips and instructions. The application is pretty straightforward and while giving clubs an opportunity to share what they are doing, it is also an opportunity for evaluation, discussion and improvement of club programs. "This is not a competition between clubs, but rather a competition of each club against a national standard, established by a committee of judges and regional chairmen. (www.amfed.org)"

The applications for the All American Club Award should be submitted to us by March 15, 2012 for forwarding to the AFMS chairman. One final note--neatness counts. Of the total 100 points possible, 15 are attributed to overall format and presentation. You'll want to make sure your submission is neat, well organized and checked for spelling and grammar. Send your completed packet to: Jim and Libby Spencer, PO Box 250, Gladstone, OR 97027. If you have questions, we can be reached at: 503 657 5290 or the_spencers@comcast.net.



Multi-Federation Fieldtrip 2012

By Doug True

I NEED YOUR INPUT!!!!

The Multi-federation fieldtrip is scheduled for June 13-15th; we will have trips in the Twin Springs area south of Ontario, Oregon. Four trips to collect petrified wood from Grassy Mt. area, Hoodoo Basin, several White plume areas and others,

QUESTION FOR ALL OF YOU: Where would you like to camp? I have made arrangements for the fairgrounds in Ontario, Oregon, \$10 per night dry camp, also water and electricity, restrooms and showers, great spot but about 45 to 60 minutes from collecting site.

Location # 2 Twin Springs camp ground located in the middle of the collecting area, 13 miles into back country. Out house, dry camp, no water or electricity and way out. BUT in the middle of all of the trips for the 4 days, 10-15 minutes to all locations. We will bring in more toilets.

I NEED TO KNOW YOUR INTERESTS AS SOON AS POSSIBLE AS I need to apply for permit for a camp on BLM Twin Springs. E-mail me at dtruefossils@yahoo.com



New Additions to the NFMS Video Library

By Sharon and Tim De Grie

2011 Award Winner

Red-Gold and Polished Agates: Upper Michigan's Hidden Treasures, DVD 32, 32 minutes

2009 Award Winner

Rainbow of Stone: Virgin Valley Opals, DVD 33, 40 minutes

Yellowstone: Imprints of Geologic Time, DVD 34 or VHS 43, 40 minutes

How the Earth Was Made: Season 1, DVD 35, approx 48 minutes each

Disc 1: San Andreas Fault, Deepest Place on Earth, Krakatoa, Loch Ness

Disc 2: New York, Driest Place on Earth, Great Lakes

Disc 3: Yellowstone, Tsunami, Asteroides

Disc 4: Iceland, Hawaii, The Alps

To borrow for your club, please contact Tim or Sharon De Grie, 509-772-2533, cell 509-910-9228 ROCKNlibrary@yahoo.com



Doug True Appointment to AFMS Committee

Doug True of Billings, Montana has joined the AFMS Conservation and Legislation Committee. Doug has been involved with US Forest issues regarding Rockhounding for many years and will bring that expertise and knowledge to the AFMS Conservation and Legislation Committee. Doug will serve as the Liaison between the American Federation of Mineralogical Societies and the US Forest Service at the National Level and will be working on defining uniform rules for Amateur Collecting of Rocks, Minerals and Fossils on all public lands managed by the US Forest Service.

Please congratulate and welcome Doug in his appointment to the AFMS Conservation and Legislation Committee. Doug may be reached through the Northwest Federation website www.amfed.org/nfms and the American Lands Access Association website <http://www.amlands.org/6715.html>.

John Martin

AFMS Conservation and Legislation Committee Chair
afms-conservation@antelecom.net

COMMITTEE REPORTS



RICE NORTHWEST MUSEUM OF ROCKS AND MINERALS
 26385 NW Groveland Drive
 Hillsboro, Oregon 97124
Phone: 503-647-2418 Email:
info@ricenorthwestmuseum.org



NEW CURATOR: RICE NORTHWEST MUSEUM OF ROCKS AND MINERALS

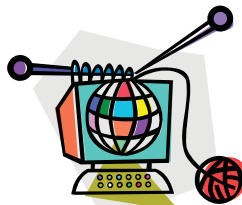
January 2012 will find Lara O'Dwyer-Brown in charge of the collections at the Rice Northwest Museum of Rocks and Minerals in Hillsboro, Oregon. Lara has collected rocks and minerals since she was young and has a passion for specimens. At the California Academy of Sciences in San Francisco she worked with Dr. Peter Roopnarine (curator) and Dr. Jean DeMouthe (collection manager) towards borrowing minerals, rocks, ores and fossils for display at UC Davis. Lara has visited the Rice Museum, toured its galleries, and (in her words) "is excited about working with the museum's phenomenal specimens to develop integrated education and outreach programs that will heighten the museum's role in the local community."

Lara received her B.A. degree in Natural Sciences (Geology) at University of Dublin, Trinity College Dublin, Ireland in 2004 and her Ph.D. in Geology at University of California Davis in 2011.

Her experience includes: being a volunteer Museum Scientist at UC Davis Dept. of Geology, a Teaching Assistant at UC Davis, performing guest lectures, outreach at McLaughlin Natural Reserve as geology module leader and curriculum designer for "KIDS" program in 2011. While at UC Davis, Lara managed the acquisition, cataloguing and integration of more than 1500 minerals from a private donor that enhanced the department's teaching and research resources. She also assembled collections of appropriate minerals and rocks to show elementary school visitors. She has had publications in American Mineralogist and Geophysical Research Letters as well as a number of published abstracts. Upon invitation she has given talks and also won the American Geophysical Union Mineral and Rock Physics Group "Outstanding Student Presentation Award in 2007". Lara is affiliated with the American Geophysical Union and the Mineralogical Society of America.

The Rice Museum looks forward to working with Lara as Curator of its collections and introducing her to not only northwest rock and mineral enthusiasts, but to the mineralogical community throughout the nation.

Sharleen Harvey
 Co-Founder and Interim Curator
 Rice Northwest Museum of Rocks and Minerals



NFMS/AFMS Website Contest
 By Cheri George
 Chairman

HI ALL!! Well, this New Year is off to a great start and I want to remind you that the Website Contest is still open. If you are a webmaster I think you should seriously consider entering! We need all the chances in AFMS that we can get. I know we have some awesome, excellent, fabulous, and most informative websites out there, please consider entering today!!

The closing date for the NFMS Contest is January 30th. I hope that helps you with your planning for your entry. I look forward to seeing all the wonderful website entries from our Federation. Happy New Year to you all!

RICE NORTHWEST MUSEUM OF ROCKS AND MINERALS
 26385 NW Groveland Drive
 Hillsboro, Oregon 97124
 503-647-2418
 Email: info@ricenorthwestmuseum.org
 Website: www.ricenorthwestmuseum.org

HOURS: 1:00 p.m. – 5:00 p.m. Wednesday through Sunday.
 Group tours by appointment.
 Closed major holidays.

**ADMISSION: Adult \$7; Senior (60+) \$6; Student (5-17) \$5.00;
 Under 5 Free**

COMING EVENTS

Jan. 7 – Sat. Gift Shop "SUPER SALE"

Feb. 12 – Sun. "SWEETHEARTS' DAY"
 (2) Adult Admissions for price of (1)

**YOUR NORTHWEST'S FINEST
 ROCKS AND MINERALS MUSEUM**

Astounding Facts About The Earth

The earth is a great space ship which we travel on every day. Every time the clock ticks a second we speed 18 1/2 miles through space. In the time it takes us to read this we have travelled 500 miles.

Earth travels 66,000 miles an hour in its circular path around the sun. It takes 365 days or one year to complete it round trip, a total of 3,417,750,000 miles. No wonder I sometimes feel dizzy.

Via CMS Tumbler 10/11; The Quarry, 9/11; The Roadrunner, 6/11; et. al.; from Alabama Mineral and Lapidary Society

NFMS SHOW AND MEETING



**We May Be A Little Bit Country,
But We Will Show You
A Rock'n Good Time!**

**The NFMS Annual Meeting will be May 18th at 4 pm
Fairgrounds in Kennewick, Washington**

Now's the time to start making your plans to attend the 2012 NFMS Show and Convention at the Fairgrounds in Kennewick, Washington on May 18th, 19th and 20th.

Start your fun-filled weekend off by attending the NFMS Rockhounds Potluck at 6:00 pm on Thursday, May 17th. Lakeside Gem & Mineral will provide the meat; please bring a dish to share.

The big show opens at 10:00 on Friday with four buildings of displays, vendors, kids' activities, demonstrations and meeting areas. Guest lectures will be followed by the ALAA meeting at 2:00 pm and the NFMS Annual Meeting at 4:00 pm.


Saturday and Sunday bring more guests lectures and demonstrations. The Awards Banquet will be held Saturday evening, off site. We will have transportation available for those campers who need a ride to the Banquet.

Future issues of the *Northwest Newsletter* will provide information on additional activities. Watch for details on Sunday's tailgating session. You will find Show registration forms on pages 10 and 11.

The weather should be delightful; average high 75 and average low 50. We have plenty of camping space at only \$15 per night which includes water and electricity. Showers are available. We will have a food vendor available for lunch all three days and for breakfast on Saturday and Sunday.

On Monday and Tuesday, following the show, with a possible field trip on Wednesday, Walt Wright will hold a seminar on petrified wood identification at the Fairgrounds. Information and registration form for the seminar and field trip are on page 9.

**2012 NFMS
Gem & Mineral Show
And Convention**



Special Exhibits
*Ice Age Floods
Coyote Canyon Mammoth Site
And More Coming*

Fantastic Fluorescent Exhibit
27 Top Vendors

"Rock'n The Country"
In
*Kennewick, Washington
May 18, 19 & 20
Benton County Fairgrounds*

Guest Lectures
*Walt Wright - Petrified Wood Expert
Bob Jackson - Geologist
Jack Powell - WA State Geologist*

Outstanding Collector Displays
Sunday Morning Tailgating

Kids Activities Extraordinaire

Come Join The Fun!
www.lakesidegemandmineralclub.com
dac@bioguardtech.com




NFMS SHOW AND MEETING



A REMINDER AND REQUEST FROM THE CREDENTIALS COMMITTEE

The NFMS Credentials Committee Chairpersons, Clara & Del Walker, must receive the NAMES (only) of Club Directors and Delegates as soon as possible (ASAP) for planning purposes of the meeting. The annual meeting will be held at 4:00 p.m. on May 18, 2012. Registration is open one hour prior to the meeting at the Benton County Fairgrounds, Kennewick, WA. The Credential forms below must be completed by the designated director/delegate, signed by the Club President and Secretary, and **BROUGHT BY THE DIRECTOR AND DELEGATE** to the annual meeting. Or, this should be done by the alternate delegate(s), if necessary. Send the name(s) (not the credentials forms) at least two days prior to the meeting to:

Clara & Del Walker
 12377 SE Davis Loop, Prineville, OR 97754
 Phone: 541-447-7826 (cell: 503-812-6540) or email to dcwalker@embarqmail.com

NFMS DIRECTOR'S CREDENTIALS

Name of Director _____
 Name of Club _____
 City, State _____
 Club President Signature _____
 Club Secretary Signature _____
 Date _____

Must be **completed** and **signed** to be seated with voting rights at the Northwest Federation of Mineralogical Societies Annual Meeting

NFMS DELEGATE'S CREDENTIALS

Name of Delegate _____
 Name of Club _____
 City, State _____
 Club President Signature _____
 Club Secretary Signature _____
 Date _____

Must be **completed** and **signed** to be seated with voting rights at the Northwest Federation of Mineralogical Societies Annual Meeting



**Petrified Wood Identification Seminar
 By W. Walton Wright, M.S.**

**Monday and Tuesday, May 21-22
 In conjunction with the NFMS Show
 and Meeting**

Walt Wright is a world renown paleo-botanist and has traveled the globe in search of new and rare plant species in the geological record. He is well known among petrified plant collectors, and donates a lot of his time to group collecting, wood discussions and offering his opinions and expertise to fellow wood and fossil enthusiasts.

Walt Wright will be offering a 2 day seminar (Monday/Tuesday May 21-22, 2012) after the 2012 Federation Show in Kennewick, WA. Walt is planning a one- day field trip following the class to a local wood location for an explanation of the geology and paleobotany (pending site approvals). Cost of the seminar is \$80 (includes printed manual; pre-registration is requested).

Pre-Registration Form

Class size limited – please pre-register if possible. The class involves 2 full days of how to identify and understand the evolutionary aspects of typical petrified woods and plants.

Mail applications and payment to:
 Dom Cataldo (dac@bioguardtech.com)
 99509 E. Brandon Dr.
 Kennewick, WA 99338
 Cell: 509-430-4910

Name (s): _____
 Phone: _____
 Email: _____
 Number of people at \$80/2 days: _____
 Total Payment: _____

A confirmation will be returned and tickets for the class will be available at the Show.
 We plan to arrange for boxed lunches that can be selected (if wanted) and paid for prior to Sunday May 20 at 2pm.
 Camping available at \$15/night.

NFMS SHOW AND MEETING



Northwest Federation of Mineralogical Societies
 Annual Show: Hosted by: Lakeside Gem and Mineral Club
"Rock 'N the Country"
 May 18 - 20, 2012
 Benton County Fairgrounds, Kennewick, WA
 ADVANCE REGISTRATION
 Deadline: April 15, 2012



(Please Print) One form per person. OK to combine payment per family. Form may be duplicated.

Name: _____ (Zip +#)
 Address: _____ (City) _____ (State) _____
 E-mail: _____ Phone: _____

Federation & Local Club Affiliation:

Please check all that apply:
 NFMS Officer: _____ Past President: _____ Delegate: _____ Alt. Delegate: _____
 Editor: _____ Judge: _____ Demonstrator: _____ Other: _____
 Competitive Exhibitor: _____ Noncompetitive Exhibitor: _____

SHOW ADMISSION (Please check)	DAILY RATE	DAYS	3 DAY PASS	TOTAL COST
Adult	\$ 5.00	_____	\$12.00	\$ _____
Children under 14 free, with paid adult				
Hookup (electric and water only)	\$ 15.00/day (about 115 sites available)	_____ days		\$ _____
No-Hookup (dry camp)	\$ 10.00/day	_____ days		\$ _____

CAMPING ON SITE at Benton County Fairgrounds

Note: All food events require reservations (All food events at Fairgrounds unless otherwise noted.)

FRIDAY May 18, 2012 If you plan to attend no cost events please **CHECK LINE**

NFMS Annual Meeting 4:00PM no cost _____

SATURDAY May 19, 2012

All Editors Breakfast 8:00AM - 10:00AM \$10.50 _____

Editor's Symposium following (about) no cost _____

Social Hour (at Country Gentleman) 6:00PM - 7:00PM cash bar _____

Awards Banquet (at Country Gentleman) 7:00PM - 9:30PM \$20.00 _____

SUNDAY May 20, 2012

Tailgating 7:00AM - 10:00AM (NFMS and Lakeside Members only) Pre-registration required _____

Officers/Committee Chairman, Judges and Clerks, and _____

Past Presidents Lunch 12 Noon - 1:00PM \$12.00 _____

Make check payable to: Lakeside Gem and Mineral Club. **TOTAL AMOUNT DUE: \$ _____**

Mail application and remittance before **April 15, 2012** to: Patricia Richardson
2817 W. 19th Ave. #46
Kennewick, WA 98337

Show Co-Chairman: Evelyn Cataldo, 509-628-0470 email: cataldoevelyn@yahoo.com
Show Co-Chairman: Larry Hulstrom, 509-783-6210 email: larryhulstrom@live.com



Northwest Federation of Mineralogical Societies
 Annual Show: Hosted by: Lakeside Gem and Mineral Club
"Rock 'N the Country"
 May 18 - 20, 2012
 Benton County Fairgrounds, Kennewick, WA
 COMPETITIVE DISPLAY APPLICATION
 Deadline: April 15, 2012



COMPETITIVE DISPLAY APPLICATION

Deadline: April 15, 2012

Name: _____ Phone: _____

Name of Spouse: _____ Fee show admission to exhibitor & spouse

Address: _____

City: _____ State: _____ Zip: _____

Member of Club/Society: _____ City/State: _____

Competing in: Division: _____ Class: _____ Junior Exhibitor: Yes No

Junior Only: Date & year of Birth: _____

Cases will be judged according to the current edition of AFMS Uniform Rules, the latest "Gem List", the latest Mineral Classification List, and the latest AFMS Fossil List.
 Exhibitor Group - Master Advanced Novice Junior Society Jr. Society
 (Consult AFMS Uniform Rules, 8th Ed. With updates at www.AMFED.org)

Type of material and/or type of exhibit (including Black Light exhibits): _____

Your case dimensions: _____ width _____ height _____ depth
 Do you need to borrow a case? Yes No
 Please note: loaner cases (4' x 2' x 2') do not have risers; you will need to bring your own. Liners will be provided, if needed.
 Please make your reservations as soon as possible if you wish to borrow a case.

You may set up your case(s) between 3 PM and 8 PM, Thursday May 17, 2012, or between 8:00 AM & 9:30 AM Friday May 18, 2012. Your exhibit may not be removed before 4:00 PM Sunday May 20, 2012. Security will be provided during setup and tear down and during the three days of the show. Should exhibitors for any reason need to open their cases between 10:00 AM Friday, May 18, 2012 and 4:00 PM Sunday, May 20, 2012 they are required to have a member of the show committee or uniformed security present.

LIABILITY: It is mutually agreed that the Lakeside Gem and Mineral Club and/or the Northwest Federation of Mineralogical Societies shall not be liable to any exhibitor in whole or in part. This includes the property of exhibitor or injury to that person resulting from any cause. Submitting this signed application for entry constitutes acceptance of their rules and regulations.

I certify that all materials exhibited in competition are my personal property, and that all workmanship exhibited in competition was done by me as required by the rules. I have read the current rules and agree to abide by them.

SIGNATURE OF EXHIBITOR: _____ Date of form: _____

OFFICER CERTIFICATION: I am an officer of _____ and I certify this exhibitor is a member in good standing of said society and AFMS.

OFFICER SIGNATURE: _____ Title: _____ City: _____

Mail applications to: Dee Holland, P.O. Box 23, Tennyon, ID 83468
 Competitive Exhibit Applications must be postmarked by April 15, 2012. One form per exhibit. Forms may be duplicated.

NFMS SHOW AND MEETING



Northwest Federation of Mineralogical Societies
 Annual Show: Hosted by: Lakeside Gem and Mineral Club
"Rock 'N the Country"
 May 18 – 20, 2012
 Benton County Fairgrounds, Kennewick, WA



NONCOMPETITIVE DISPLAY APPLICATION
Deadline: April 15, 2012

Name: _____ Phone: _____
 Name of Spouse: _____ Free show admission to exhibitor & spouse
 Address: _____
 City: _____ State: _____ Zip: _____
 Member of Club/Society: _____ City/State: _____
 Type of material and/or type of exhibit (including Black Light exhibits): _____

Your case dimensions: _____ width _____ height _____ depth
 Do you need to borrow a case? Yes No

Please note: loaner cases (4' x 2' x 2') do not always have risers, you will need to bring your own. Liners will be provided, if needed. Please make your reservations as soon as possible if you wish to borrow a case.

You may set up your case(s) between 3 PM and 8 PM, Thursday May 17, 2012, or between 8:00 AM & 9:30 AM Friday May 18, 2012. Your exhibit may not be removed before 4:00 PM Sunday May 20, 2012. Security will be provided during setup and tear down and during the three days of the show. Should exhibitors for any reason need to open their cases between 10:00 AM Friday May 18, 2012 and 4:00 PM Sunday, May 20, 2012 they are required to have a member of the show committee or uniformed security present.

LIABILITY: It is mutually agreed that the Lakeside Gem and Mineral Club and/or the Northwest Federation of Mineralogical Societies shall not be liable to any Exhibitor in whole or in part. This includes the property of Exhibitor or injury to their person resulting from any cause. Submitting this signed application for entry constitutes acceptance of their rules and regulations.

SIGNATURE OF EXHIBITOR: _____
 Mail applications to: **RON NORTHEY**
 1506 S. Olson
 Kennewick, WA 99338
 (Tel. 509-783-2655)
 (E-mail: nyandron@charter.net)

Mail this form for **NONCOMPETITIVE EXHIBIT APPLICATION** before April 15, 2012
 Please submit one form per exhibit. Form may be duplicated as needed.

Bess's Wish A Rockhound's Last Request

by Betty Novak, Chicago Rocks & Mineral Society
 From: *The Pick & Dop Stick*, 9/2010
 (2nd Place – AFMS Poetry)

As the jet of night fades to amethyst, an opalescent spray
 Of agate bands streaking the eastern horizon
 Gives way to azure skies studded with pearly clouds
 Lit by the crystalline pure light of the golden sun,

Think of me.

As you walk through fields of malachite and tourmaline,
 Full of garnet and sapphire blooms
 Roses of quartz, bushes of jade
 Forests of aventurine, peridot and emerald trees,

Reminisce about me.

As you hunt in quarries or fields, on mountains or shores,
 For agates, geodes, fossils or gems,
 While you collect, trade, cab, carve, or facet,
 And attend meetings and shows, sharing with others,

Think of me.

And at the end of the day when a rhodonite glow infuses the west,
 While ruby and citrine swirl among the cinnabar clouds
 Casting copper reflections on turquoise and aquamarine waters
 As the sodalite sky darkens to obsidian night
 Studded with diamond stars around a silver moon,

Remember me.

Via Boulder Busters V46, #12, 2011



COMMITTEE REPORTS

NEWSFLASH

Kennewick, Tri-Cities, WA

PERSONAL INVITATION

CHECK IN AND CHECK OUT

By Andy Johnson

The 2012 NFMS Show and Exhibition is being held in Kennewick, WA this coming May 18 through May 20, 2012 at the Benton-Franklin Fairgrounds.

The three cities of Pasco, Kennewick and Richland are affectionately referred to as the Tri-Cities and are nestled along the banks of the Columbia River situated in the desert basin of Southeast Washington. Although known for its fine wineries and dining options and abundant river recreation, much more exists to do and see within a 50 mile radius of the showgrounds.

A Ticket 2 Adventure featuring 10 must-see/do activities while in the Tri-Cities has been provided for your entertainment and enjoyment.

For the more adventuresome travel 90 minutes north and visit the Saddle Mountains to collect petrified wood or drive a bit further north to collect common opal and agate at the Diadomite open pit mine junction near George, Washington.

While in the vicinity do not overlook viewing the life size wild horses sculpture outside Vantage, WA while on your way to the renowned Ginko Petrified Forest museum.

The Lakeside Gem and Mineral Club is proud to host and sponsor this year's Federation Show and cordially invite one and all to attend. Take advantage of this "Oasis in the Desert" by claiming your **Ticket 2 Adventure**. Come join us for a memorable experience and have fun in the sun.

AFMS Conservation and Legislation Report

By John Martin

afms-conservation@antelecom.net

On November 3, 2011 a bill was introduced in congress that has a large impact on all 5 states of the Northwest Federation of Mineralogical Societies. The bill is entitled *Northern Rockies Ecosystem Protection Act* – H.R 3334 and was sponsored by Rep. Carolyn Maloney [D-NY14]. The purpose of the bill is to "Designate certain National Forest System lands and public lands under the jurisdiction of the Secretary of the Interior in the States of Idaho, Montana, Oregon, Washington, and Wyoming as wilderness and wild and scenic rivers, to provide for the establishment of a Northern Rockies Wildlife Habitat and Corridors Information System and Program, and for other purposes."

If enacted, this bill will turn 24-million acres of the Northwest Federation's National Forest and BLM Public land into a massive wilderness. This may have a devastating effect on access to amateur rock, mineral and fossil collecting sites in a five state area. More information on this bill may be found on the American Lands Access Association Website. <http://www.amlands.org/6652/index.html> The American Federation of Mineralogical Societies and the American Lands Access Association recognizes the need to conserve and protect our Natural Resources and Wildlife Habitat with sensible and reasonable Land Management Practices, this bill seems to take that protection to an extreme.

As this congressional legislative session comes to an end it appears that the Rockhound Community has not lost access to any identified collecting sites through legislative actions.

Puzzles of Stone

by Michael Wingo

A lost and vanished race of saurian giants
They ruled the earth, these massive tyrants.
The eons passed and they were its witness
Their rule on the planet seemed limitless
Sharp of tooth and mighty beak,

Massive in size, awesome and sleek.
The terrible lizards held the earth as their stage
As they acted out their primordial rage
Some were massive and mighty of stance,
Eaters of meat, or chewers of plants.
Others much smaller or given flight,
Some lived by day, others by night.

Then they were gone, imbedded in stone.
Puzzles for us to sort, made of their bone.
What was their lesson, and what do they teach?
These animals lone gone, so far out of reach.
Is there something to learn from these ancient times?

The long lost tyrants and their silent minds.
Can they ask us a question or pose for a thought.
Do they live in our imagination or is it all for naught.
A poet would say they have a story to tell
One made of more than just bone, or rocks or shell
Whether we learn from their fossils and broken bones
Or the chapters written of their end preserved in stones.

Via CMS Tumbler 10/11; Quarry Quips, 9/11



TICKET 2 ADVENTURE

1. Learn about **Kennewick Man** at the Benton County Historical Museum in Kennewick.
2. View the **Seven Story Circles** and Interpretive Center at Sacajawea State Park.
3. Bike or Hike a portion of the 23 mile **Sacajawea Heritage Trail**.
4. Visit **CHREST Museum** in Richland and obtain an "Atomic" Marble.
5. See the Lighthouse at **Clover Island** and walk the island and view the art.
6. Discover elk, coyotes, migratory birds and other wildlife on the **McNary National Wildlife Refuge**.
7. Visit the **Hanford Reach**, the last remaining free flowing stretch of the Columbia River remaining in the United States. Designated as a National Monument in 2000 by President Bill Clinton.
8. Walk over the Ed Hendler Bridge, a nationally acclaimed suspension bridge spanning the **Columbia River**.
9. View the collection of Indian artifacts at the **Franklin County Museum** in Pasco.
10. Visit "Rocks, Gems & More" rock shop across from Hubby's Pizza in Kennewick.

ADMIT ANY ONE

AFMS NEWS

Lets Begin the New Year Right !

AFMS Code of Ethics

I will respect both private and public property and will do no collecting on privately owned land without the owner's permission.

I will keep informed on all laws, regulations of rules governing collecting on public lands and will observe them.

I will to the best of my ability, ascertain the boundary lines of property on which I plan to collect.

I will use no firearms or blasting material in collecting areas.

I will cause no willful damage to property of any kind - fences, signs, buildings.

I will leave all gates as found.

I will build fires in designated or safe places only and will be certain they are completely extinguished before leaving the area.

I will discard no burning material - matches, cigarettes, etc.

I will fill all excavation holes which may be dangerous to livestock.

I will not contaminate wells, creeks or other water supply.

I will cause no willful damage to collecting material and will take home only what I can reasonably use.

I will practice conservation and undertake to utilize fully and well the materials I have collected and will recycle my surplus for the pleasure and benefit of others.

I will support the rockhound project H.E.L.P. (Help Eliminate Litter Please) and Will leave all collecting areas devoid of litter, regardless of how found.

I will cooperate with field trip leaders and those in designated authority in all collecting areas.

I will report to my club or Federation officers, Bureau of Land management or other authorities, any deposit of petrified wood or other materials on public lands which should be protected for the enjoyment of future generations for public educational and scientific purposes.

I will appreciate and protect our heritage of natural resources.

I will observe the "Golden Rule", will use "Good Outdoor Manners" and will at all times conduct myself in a manner which will add to the stature and Public "image" of rockhounds everywhere.



National Rockhound & Lapidary Hall of Fame Inductees By Steve Weinberger

The National Rockhound and Lapidary Hall of Fame was founded in 1987 by June Culp Zeitner to recognize excellence in the earth sciences by inducting one or more persons each year in six categories: Minerals, Fossils, Metal Craft, Lapidary, Education and Tribute (Deceased). At this time we have inductees representing 44 states. All of the inductees are experts in their fields. Many of them have published several books and most of them have been active in community service.

The Hall of Fame is housed in the Pioneer Auto Show at Murdo, SD and features numerous gems, minerals and fossils from the collection of June Culp Zeitner and other HOF inductees as well as photographs of each inductee. As you head east or west on I-90, just watch for the looooooong green car at the Murdo, SD exit. It is with great pleasure that I announce the inductees of the "class of 2011".

Lapidary - Harold Smith - North Carolina

A retired professor of biochemistry and award winning faceter, he served on the SFMS Uniform Rules Committee and taught faceting at both the SFMS Wiliam Holland and Wildacres workshops.

Minerals - George Rapp - Minnesota

Professor of geology at the Univ. of Minnesota and AFMS Scholarship Foundation Honorary Recipient, Dr. Rapp is the author of 11 books including the *Encyclopedia of Minerals* (with Roberts) as well as many scientific papers.

Education - Harold Brady- North Dakota

A life-long rockhound, Harold was responsible for urging the state legislature to name a state fossil, and even in his 90's continues to teach classes and give presentations for his club, and always works at the club show of which he was the first organizer.

Tribute - Jack Nelson - Maryland

Jack was a well known gold panner, micromounter and lapidary. His patience at looking at the black sands found in gold panning, led to the discovery of cubic garnets in the sands. He loved writing and leading field trips, especially for children and often shared his "finds" with others.

To see a complete list of all inductees or learn how to nominate someone for consideration visit <www.rockhoundhalloffame.org>.

Via AFMS Newsletter 11/11

HINTS FOR THE NEW YEAR

Getting to the Point

By Ellery Borow,
EFMLS Safety Chair

Getting to the point is important. Making a good point is important. Having the right point on a rock chisel is also important. In the November, 2011 issue of the EFMLS News there was a Safety Matters article about the mushroom – a mushroom head and a dull point on a rock chisel. A question has been raised about the best point to use for a rock splitting chisel.

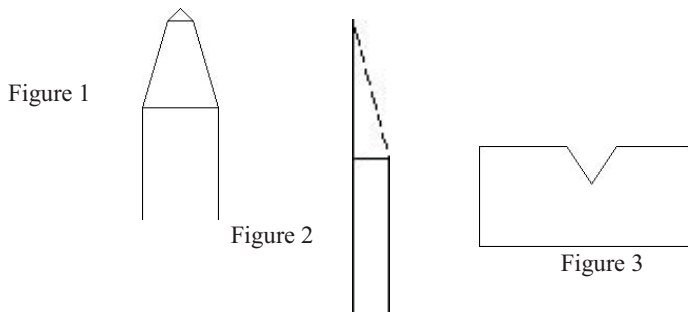
As with many questions, there are several answers as to what is the best point shape for a rock chisel. When one uses a rock chisel on relatively soft and easily split specimens, one might find a sharper edge on their chisel to be beneficial. When one is hammering on stubbornly-refusing-to-split specimens, a shallower (blunter) chisel point may be more useful. It sometimes takes a bit of experimenting to find the best point angle to work with the material one most often encounters.

Rock chisel manufactures usually grind their factory-fresh chisels to a point that works well with the majority of commonly encountered rocks. They take into account the geometry (angle) of the cutting edges and the metallurgy of the steel used in the chisel's construction to fashion the best point for the most frequently encountered conditions.

Figure 1 shows a common configuration of primary and secondary grinds for a rock splitting chisel. Figure 2 shows a common angle for a wood cutting chisel. While the steel in both types of chisels is of high quality, the rock chisel's steel must be treated to a degree that makes it harder, tougher, and very durable for use on rocks. The angle used on a rock chisel is the best compromise of durability and usefulness. The sharper angle on a wood chisel is made for use on wood. The wood chisel's angle is necessarily sharper to cleanly slice the fibers in the wood's structure. Sharpness is necessary for wood. Wood chisel sharpness has the disadvantage of being more easily damaged. Personally I have found that such extra sharp edges may be damaged when cutting through something as soft as a knot in a piece of hardwood. Taking a wood chisel and using it on rocks would most likely result in a severely damaged chisel and, more importantly, the possibility of steel shards in the eye.

Different chiseling requirements mean different chisel point angles. One tip I use, after purchasing a new rock chisel, is to cut a small notch in a piece of cardboard, sheet plastic, or bit of sheet metal such that the notch is the same angle as that on the chisel. When I eventually need to regrind the point, I use the notch as a template or grinding guide for reshaping the point so it once again looks factory fresh. See Figure 3 for the notch guide template.

As with every tool reshaping effort, please observe all safety regulations and guidelines. Your safety matters.



Via EFMLS News 1/12

Don't Be Cheap or Generosity Pays Great Dividends

By Darryl Powell,
EFMLS Junior Activities Chair

The very first time I visited a mineral club meeting, the club regulars had donated specimens for the end of the meeting door prizes. Door prize tickets were given out, not purchased. By the end of the evening I had won a rather nice specimen, one worthy of adding to my collection. Over time, the club members must have used up their better duplicates. Before long, the door prizes were not even good enough to be called leaverites.

Now, imagine you are little Johnny and Jane and Mom and Dad have taken the time to check out the local mineral club (that is, *your* mineral club) and little Johnny wins a sharp calcite dogtooth crystal cluster from the Brushy Creek mine and Jane wins a gem-quality "Herkimer Diamond" quartz crystal on matrix. You can be assured little Johnny and Jane (along with their very impressed and very pleased Mom and Dad) will be back the next month. This single experience of generosity can set the stage for a lifetime of love for minerals and perhaps even a career in Earth Sciences.

Let me present my point very directly: **please be extraordinarily generous to the children in your mineral club or society; it will pay off with great rewards for them and for you.** Mr. Jim Brace-Thompson has been one of the most active and dynamic forces in the AFMS for educating young collectors and encouraging our commitment to Juniors' programs in our clubs and societies. He single-handedly created the AFMS patch program for Juniors. (If you do not use this program, do so immediately. It is interesting, fun, flexible and FREE . . . a benefit of being an AFMS club a benefit of being an AFMS club or society.) Jim did a most amazing thing recently. At the annual Ventura Gem & Mineral Society annual show, Jim personally funded an award for the best display presented by a Junior from their Society. The prize was \$200 (from his own resources) and a high-quality specimen from his personal collection.

This kind of investment in our Junior members is inspiring, exciting, encouraging, and rewarding, for the Juniors and for our hobby. I hereby challenge each club and society of the Eastern Federation to invest, generously and significantly, in your young members. Follow Jim's example and establish a generous prize for a display at your show. Establish an annual scholarship for your local High School (example: \$200 scholarship given each year to an outstanding High School graduate who plans to pursue an education and career in a branch of geology and/or environmental sciences). Give door prizes at your meetings (especially for the children) that are *not* leaverites, but are quality specimens. Take your youth to a significant museum, even if that means traveling and staying overnight somewhere, and pay the cost of the event for them.

For those who already invest significantly – in treasure and time – in your Junior members, thank you! I am confident you see on a regular basis the return on your investment.

Blessings to all.

Via EFMLS News 1/12



**Wishing you a year of
Peace and Love !**

SPECIAL REPORT ON THE ROCKHOUND RETREAT

Three Days At The N.W. Rock Hound Retreat

By Bert Kae-Je'

N.W. Rock Hound Retreat.....What is this?

There it was on a piece of newsprint...saying register.
Never been to that before and no one seems to know,
But sounds right for me... maybe I should go,
Pondering, could I, would I, learn something new,
Would they answer MY QUESTIONS, or force me to a mold?

Havin' taken many a studio courses thru out the years,
For my Ph.D. in Clinical Psychology and Art Therapy,
Courses in lapidary, casting, jewelery fabrication and silver making,
Yet, *I've just begun*, and I'm HUNGRY to LEARN a-MORE,

But go alone? No one seemed to want to go,
No relative, friends, and no one going from the club –so I thought,
Should I go alone, drive hot narrow desert curvilinear roads,
Sleep in those sizzling, pest laden cabins?
Would it be worth it? Worth what, the price wasn't bad,
Worth the time, trip, and obliged socialization for a very private person.

Take the fans, flashlight, selected stones, and my grubby clothes.
The insect spray, water bottle, and what-ever things for swap night.
Take my problems, my QUESTIONS, a trillion QUESTIONS!
I figured if only, if only, I could get some of my questions answered,
About lapidary, about casting, about.....just everything
It would be worth it!

2011, Hancock Field Station, Antelope, Oregon – What a place!
Unbeknown to participants, it was the year of the flu!
Although camp disinfected, leaders held their breath,
Just the week before, the youn-uns had seen a camp wipe-out,
Oh well... I had my flu shot, my shingles shot, my pneumonia shot,
I had my water bottle, my healthy snack food, and my fans,
How could anything else be needed?

Just hydrate they said, keep **hydrated**, hydrate we'll make it.
My fingers crossed, my prayers said,
But in this journey, I was destined, my turn to vomit and moan.
I wanted to make it, but I didn't! I knew I had to go,
Sick, I headed for home on Thursday not Sunday.

But that's all it took, 3 days of the N.W. Rock Hound Retreat,
And many a QUESTION answered, friends made, & new ideas befall,
Top bunk virtually too high to hoist oneself up to sleep,
Stumblin' to the outhouse mid the dark night.

And little frogs sometimes sharing the shower....but OOOOOH,
Park front forward, fires don't wait, so Mini-Cooper re-parked,
Snagged a tree and the *plastic* bumper fell off,
Faceter's put it back on with bailing wire to get me home.

I found, friendly helpful faces that had come for 7 years,
Neophytes, and semi-learned interfacing with those who knew,
No pompous, egotistical, pretentious, know it alls teaching here,
No QUESTION unwelcome and even e-mails shared for the future.

A Slice of Heaven.....streets of gemstones, doublets of fern,
Beads of leather and beauty, cabochons and freeform.
Of Course there were politics involved; in due course I saw some,
What organization doesn't have such?

But they didn't reign; graciousness reined, skills freely shared,
QUESTIONS answered, a fantastic roommate, all friends and affable,
They intrigued me, a creative lot they were with *gems* to share.
Everyone worked to make this Hancock Station buzz a-right.

Silver- making, Seed Beading more beautiful than ever,
Faceter's most serious and laborious of them all,
Wire Wrapper's twisting, turning, not so easy.....
Intarsia, imagination in abundance, and then there was,
Rock cutters oiled and pressin' on, slabing their Ryolite.

As for swap night I got what I wanted and so did they.
Able to learn more than one craft in the week,
Go where you wish, if there is room in the class.
Bead, torch, slab, grind, and carve to your heart's content.

Food was good and lapidary equipment nice and big!
No restrictive rules, free form and originality welcome,
My QUESTIONS answered and now I know in part,
These folks cared for each other and came year after year.
My life was enriched with people, joy, knowledge and skills.

A slice of Heaven offered us all,
Without-a-doubt I'll be back for year two,
I can't wait to do an Ammonite or a bug in a Doublet,
Bead a Cabochon, or polish my new stone from Idar Oberstein!

2012 NW Rock Hound Retreat,
Register me now Lamar!
Lord Wilin' and the Creek Don't Rise, I'll Come,
I'll be there to meet you with a smile
And more, more, new questions of my own!

Thank-You Instructors, Coordinators, Cooks, Helpers and Participants.

By Bert Kae-Je', D. Min., Ph.D. --is a member of Lakeland Rock and Gem Club in Kennewick, WA.
She is also a Clinical Psychologist, Pastoral Counsellor, and Art Therapist. She enjoys her work but for her mental health she often works in the back room. *Just a- makin' somethin'.*



Pictures by Bert Kae-Je'

NFMS MEMBER CLUBS' SHOW SCHEDULE

February 10 - 12 Fri, Sat & Sun 10 - 5	Oregon Agate & Mineral Society	OMSI 1945 SE Water, Portland OR	Craig Prier 503 984 7004 4927 SE Haig St. Portland, OR 97206 oamsrockhound@live.com
February 11 - 12 Sat 9 - 5, Sun 9 - 4	Whidbey Island Gem Club	Oak Harbor Senior Center 51 SE Jerome Street, Oak Harbor, WA 98277	Keith Ludemann 360 675 1837 rock9@whidbey.net
February 25 - 26 Sat 10 - 6, Sun 10 - 5	Idaho Gem & Mineral Club, Inc	Expo Idaho, 5610 Glenwood Boise, Idaho (Corner of Glenwood & Highway 20)	Charlie Smith PO Box 1264 Riggins, ID 83549 208 628 4002 tetongems@frontier.com
March 3 - 4 Sat 9 - 6, Sun 9 - 5	Owyhee Gem & Mineral Society	O'Conner Field House 2200 Blaine, Caldwell, ID	Carolyn Roberts 208 466 6191 ncrobertsrp@msn.com, www.owyheerocks.com
March 10 - 11 Sat 9 - 6, Sun 10 - 5	Magic Valley Gem Club	Twin Falls Co. Fairgrounds 215 Fair Avenue, Filer, ID	Shirley Metts 208 423 4827 rmetts@cableone.net or Jon Cromer 208 293 5846, rokcutter@hotmail.com
March 10 - 11 Sat 9 - 5, Sun 10 - 4	Rock and Arrowhead Club	Klamath Co. Fairgrounds 3531 South 6 th Street, Klamath Falls OR	Linda Watson/Robert Gresham 541 281 9295 watsongresham@charter.net
March 16-18 Fri 10 - 7, Sat 10 - 7 Sun 10 - 5	Timpanogos Gem & Mineral Society with a Junior Club	Spanish Fork Fairgrounds 475 South Main Street, Spanish Fork, UT	Keith Fackrell PO Box 65 Provo, UT 84601 801 592 0410 timprocks@gmail.com, timprocks.weebly.com
March 30 - 31 Fri 8:30 - 6, Sat 9 - 5	The Panorama Gem & Mineral Club	Fort Colville Grange Hall 1 mi. East of junction of US 395 & Hwy 20, Colville WA	Bill Allen 509 935 8779 sago@theofficenet.com
March 31 - April 1 Sat 10 - 6, Sun 10 - 5	Sweet Home Rock & Mineral Society	Sweet Home High School Activity Gym 1641 Long Street, Sweet Home OR	Joe Cota 541 451 2740 PO Box 2279 Lebanon, OR 97355
March 31 - April 1 Sat 10 - 6, Sun 10 - 5	Mt. Baker Rock & Gem Club	Bloedel-Donovan Park 2214 Electric Ave. Bellingham, WA	Daniel Hayes, 360 312-8380, hayes0406@gmail.com, www.mtbakerrockclub.org
March 31 - April 1 Sat 10 - 6, Sun 10 - 5	Southeast Idaho Gem & Mineral Society	Bannock County Fair Grounds 10588 Ifft Road, Pocatello ID	Kevin Taylor 208 232 4269 PO Box 3089 West Neeley Loop American Falls, ID 83211
April 14 - 15 Sat 10 - 6, Sun 10 - 5	Idaho Falls Gem & Mineral Club	Idaho Falls Recreation Center B Street, Idaho Falls, ID	Jim Bosley 208 520 1819 jbosley@cableone.net
April 20 - 22 Fri 9 - 6, Sat 10 - 6 Sun 10 - 4:30	Willamette Agate & Mineral Society (WAMS)	Polk County Fairgrounds 520 South Pacific Hwy West Rickreall, OR	Etheleen Flippo 503 623 4247 reflippoo@hotmail.com
April 21 - 22 Sat 10 - 5, Sun 10 - 5	West Seattle Rock Club	Alki Masonic Temple 4736 40 th Avenue SW, Seattle WA	Audrey Vogelpohl 206 932 3292 avogelpohl@comcast.net www.westseattlerockclub.org
April 21 - 22 Sat 10 - 6, Sun 10 - 4	Yakima Rock & Mineral Club	Washington National Guard Amory 2501 Airport Lane, Yakima WA	Marti Sondgeroth 509 248 6401 evenings cell 509 910 3484, Marthms@q.com
April 28 - 29 Sat 10 - 6, Sun 10 - 4	Hatrockhounds Gem and Mineral Society	Hermiston Conference Center 415 South Highway 395, Hermiston, OR 97838	Mike Filarski 541 922 5091 stonemorlin1@netscape.net, www.hatrockhounds.org
April 28 - 29 Sat 10 - 5, Sun 10 - 5	Gray's Harbor Rock & Gem Club	Gray's Harbor County Fairgrounds 43 Elma - McCleary Road Elma, WA 98514	Gary Emberley 360 533 6196 melissa624@hotmail.com
May 4 - 6 Fri 10 - 6, Sat 10 - 6 Sun 10 - 4	Spokane Rock Rollers Club	Spokane County Fair & Expo Center North 604 Havana (at Broadway) Spokane WA	Mike Shaw 509 244 8542 mikeshawmoose@yahoo.com www.rockrollers.org
May 18 - 20, 2012 Fri 10 - 5, Sat 10 - 5 Sun 10 - 4	2012 NFMS Annual Gem Show, Lakeside Gem & Mineral Club	Benton County Fairgrounds 1500 South Oak, Kennewick WA	Dom Cataldo dac@bioguardtech.com PO Box 6652, Kennewick, WA 99336 www.lakesidegemandmineralclub.com
June 2 - 3 Sat 10 - 6, Sun 10 - 5	Everett Rock & Gem Club	Everett Soccer Arena, 2201 California St. Everett, WA (new location)	Fritz Mack 425 232 0809 PO Box 1615 Everett WA 98206
June 9 - 10 Sat 10 - 5, Sun 10 - 5	Butte Mineral & Gem Club	Butte Civic Center Annex 1340 Harrison Avenue (exit 127 North), Butte, MT	Peter Knudsen PO Box 4492 Butte MT 59702 406 496 4395



Happy Rockhound New Year

