



NORTHWEST NEWSLETTER



Northwest Federation of Mineralogical Societies
Tom Burchard, Circulation
875 E 4500 S
S Ogden, UT 84403-2913

VOLUME 51, NO. 4 Northwest Federation of Mineralogical Societies DEC 2010



Judi Allison 1st VP

Here we are: already into December. Wow! The year certainly is disappearing rapidly. I feel a bit like the White Rabbit in Alice in Wonderland. "So much to do, so much to do and so little time." I guess I'd better keep an eye on my watch and be a bit like Santa. "Make a list and check it twice."

Tomorrow is a day to start planning the Christmas Party for our Lakeside Club. Tuesday will be the first "I Did It" Program for the Hatrockhounds. Dues are coming due, minutes need to be written, dealers have been contacted for the

Lakeside Show, programs have been planned for the Hatrockhounds, and on and on. Of course there are all the other things I seem to get myself involved in also: Secretary of the Kiwanis, volunteering for the Special Olympics Bowling Tournament, Festival of Trees to name a few. Then, there is that necessary evil known as "work" so I can do all the other things.

I try not to let any grass grow under my feet, but in so doing, I find I need to stop and take a breath and remind myself of the important things I need to accomplish in the future, as it sneaks up really fast. As 1st Vice President, I am in charge of the budget projection for the fiscal year beginning in September of 2011. The mid-year meeting will be taking place in Kennewick in April, with the annual meeting to follow the end of July. Although those dates seem far away right now, they will be upon us before we know it. Even though we have the 2011 Federation Show in place for July and the 2012 Show in place for May of that year, we must not get complacent and think that we need not worry about the venue for future shows. With that thought in mind, please consider hosting a Federation Show in 2013 or 2014. If you take up the idea at this time, it gives you plenty of time to "make your list and check it twice." Let's not be like the White Rabbit and run out of time. Let's be ready when the time comes.



Mark Your Calendars:

**Tri-Federation Field Trip – Hampton Butte, OR
Memorial Day weekend, May 27-30, 2011**

Future NFMS Annual Meetings

**2011 – July 29-31, Southwest Washington Fairgrounds,
Chehalis, WA**

**2012 – May 18-20, Benton County Fairgrounds,
Kennewick, WA**



What's Inside:

Officer/Committee Reports	1
Website Contest	3
NFMS Dues	4
Meetings in Quartzsite	4
Rockhound Rendezvous	5
Editor's Rockpile	5
Public Lands	6
Quartzsite Schedule	7
Show Calendar	8

**JANUARY NEWSLETTER
ARTICLES ARE DUE ON
DECEMBER 15TH**

There will not be a NFMS Newsletter in February, 2011 due to the editor being on a rock pilgrimage to Quartzsite, AZ. Please plan your articles and announcements accordingly.

Contact
Beth Heesacker
Email: nfmseditor@coho.net

NFMS Website:
www.amfed.org/nfms

Non-Profit Org.
U.S. Postage Paid
Burley ID 83318
Permit No. 9

NFMS EXECUTIVE OFFICERS 2010-2011

PRESIDENT: Fritz Mack, Everett Rock & Gem Club, 10619 Holly Dr., Everett, WA 98204, 425.513.0115, rockngem_mack@comcast.net
1st VICE PRESIDENT: Judi Allison, Hatrockhounds Gem & Mineral Society, 1701 NW 11th #A, Hermiston, OR 97838, (541) 720.4950, jall@eotnet.net
2ND VICE PRESIDENT: Kathy Moedl, Idaho Falls Gem and Mineral Society, 149 E. 1st. N, Rexburg, ID 83440, (208) 356-4169, kmoedl@cableone.net
EXECUTIVE SECRETARY: Joan Day, Golden Spike Gem & Mineral Society, 509 Highland Blvd., Brigham City, UT. 84302, (435) 723-3830, joanday@sisna.com
TREASURER: Lyle Vogelpohl, West Seattle Rock Club, 8810 37th Ave. SW, Seattle, WA 98126-3617, (206) 932-3292, nfmstreasurer@comcast.net

NFMS STANDING COMMITTEES

BUDGET: Judi Allison, 1st Vice President (see above)
BULLETIN AIDS: Peggy Blickfeldt, Idaho Gem Club, 236 Tollgate Rd., Boise, ID 83716, (208) 345-8774, grumpies@acn.net
CIRCULATION: Tom Burchard, Golden Spike Gem & Mineral Society, 875 E 4500 S, S. Ogden, UT 84403, (801) 479-4286, Roxhound@aol.com
CREDENTIALS: Del & Clara Walker, Tualatin Valley Gem Club, 12377 SE Davis Loop, Prineville, OR 97754, (541) 447-7826, dcwalker@embarqmail.com
CUSTODIAN: Kathy Moedl, 2nd Vice President (see above)
DIRECTORY: Audrey Vogelpohl, West Seattle Rock Club, 8810 37th Ave. SW, Seattle, WA 98126-3617, nfmsdirectory@comcast.net
EDUCATION: Jim & Libby Spencer, Clackamette Mineral & Gem Society, 660 Collins Crest, Gladstone, OR 97027, (503) 650-5027, the_spencers@comcast.net
ENDOWMENT FUND: CHAIRMAN: Edna Nelson, Mt Hood Rock Club, 66830 Maple Crest Rd., Deer Island, OR 97054, (503) 397-5284, snelson@ados.net ;
TREASURER: NFMS Treasurer (see above)
EXHIBITS REGISTRAR: Larry Hulstrom, Lakeside Gem & Mineral Club, 5409 W 26th, Kennewick, WA 99338, (509) 783-6210, rockhound132@charter.net
FINANCIAL ADVISOR: Jon Spunaugle, 4841 Doctor Eldridge Dr., Washougal, WA 98671, 360.624.7604, jonspe@comcast.net
HISTORIAN: Dee Holland, Bitterroot Gem/Mineral Soc, Hamilton, MT, P.O. Box 23, Tendoy, ID., 83468-0023, (619) 460-6128 or (208) 756-2394, beauholland@centurytel.net
JUDGING DIRECTOR: Dee Holland, Bitterroot Gem/Mineral Soc, Hamilton, MT, P.O.Box 23, Tendoy, ID, 83468, (208) 756-2394, beauholland@centurytel.net
JUNIORS CHAIR: Rick Bower,
NEWSLETTER EDITOR: Beth Heesacker, Clackamette Gem & Mineral Corp., 4145 NW Heesacker Rd., Forest Grove OR, 97116, (503) 357-8804, nfmseditor@coho.net
NFMS Club-at-Large: 1st Vice President (see above)
NOMINATING CHAIRMAN: Evelyn Cataldo, Lakeside Gem & Mineral Club, 99509 Brandon Dr. Kennewick, WA, 99336, (509) 628-0170, ecataldo@cbtabs.com
OPERATIONS REVIEW: OPEN
PAST PRESIDENTS COUNCIL: Chuck Sonner, Southern WA. Mineralogical Society, 165 Tingle Rd., Winlock, WA. 98596, (360) 785-3909, chuckagate2@yahoo.com
PUBLIC LANDS ADVISORY: Andy Johnson, Lakeside Gem & Mineral Club, P.O.Box 3251, Pasco, WA 99302, (509)546-1950, washatonian@hotmail.com
SLIDE/ VIDEO LIBRARIAN: Tim and Sharon DeGrie, Lakeside Gem & Mineral Club, P.O. Box 458 Goldendale, WA 98620, 509-772-2533, cell 509-910-9228 ROCKNlibrary@yahoo.com
RESOLUTIONS: Fred Burton, Golden Spike Gem & Mineral Society, 90 Lakeview, Tooele, UT 84074, (435)882.8614, fburton@trilobyte.net
RULES & AWARDS CHAIR: Dee Holland, Bitterroot Gem/Mineral Soc, Hamilton, MT, P.O.Box 23, Tendoy, ID, 83468, (208) 756-2394, beauholland@centurytel.net
SAFETY: OPEN
SCHOLARSHIP: Rose Alene McArthur, Hells Canyon Gem Club, 14 Debertin Drive, Orofino, Idaho, 83544, (208) 476-3840, obmcarthur@cpinternet.com
SHOW CHAIRPERSON 2011: Chuck Sonner, Southern WA. Mineralogical Society, 165 Tingle Rd., Winlock, WA. 98596, (360) 785-3909, chuckagate2@yahoo.com
SHOW CHAIRPERSON 2012: Larry Hulstrom and Evelyn Cataldo, Lakeside Gem and Mineral Club, 5409 W. 26th, Kennewick, WA, 99338, (509) 783-6210,

SHOW COORDINATION: Pat Lambert, Lakeside Gem & Mineral Club, 26106 S. Oak, Kennewick, WA 99337, palambert@charter.net
STAMPS: Hermina Kolski, Club-at-Large, 208 Riverview 2 East, Great Falls, MT 59404-1534, 406-231-0620
SUPPLIES: Tim Hoff, Butte Mineral & Gem Club, 1016 Waukesha Ave, Butte, MT., 59701, 406-491-3587, nwfm.timhoff@bresnan.net
WAYS & MEANS: Janice Van Cura, Willamette Agate & Mineral Society, Inc.3448 NW Covey Run, Corvallis, OR 97330 (541)753-2401, jvancura@peak.org
WEBMASTER: Jack Eads, Kitsap Mineral & Gem Soc., 5169 E. Hillcrest Drive, Port Orchard, WA. 98366-8101, (360) 871-2445, jacke@wavecable.com
NFMS WEB SITE: www.amfed.org/nfms

NFMS SPECIAL COMMITTEES

FIELD TRIP CHAIRMAN: Doug True, Billings Gem & Mineral Club, 2622 Broadwater, Billings, MT 59102, 406.670.0506, dtruefossils@yahoo.com
LONG RANGE PLANNING: Bryan Schroeder, Lakeside Gem & Mineral Club, 153 Spring St., Richland, WA 99354, (509) 371-1572, bks1939@gmail.com
NORTHWEST ROCKHOUND RETREAT (Hancock): Lamar Tilgner (Chair), Mt. Hood Rock Club, 200 SE Olvera Ave., Gresham, OR 97080, (503) 666-2905, lstilgner1@verizon.net
OPERATIONS PROCEDURE UPDATE: OPEN
ROCKHOUND OF THE YEAR: Viola Jones, Skagit Rock & Gem Club, P. O. Box 2841, Mt. Vernon, WA. 98273, (360) 424-8340, rocks1x1vi.george@verizon.net
WEBSITE COMPETITION: Cheri George, 2255 W. Avenue O, Palmdale, CA 93551, (562) 243-8470 lizardwoman3@yahoo.com.

AFMS COMMITTEES (NFMS Representatives)

AFMS 1st VICE PRESIDENT-Doug True, ENDOWMENT FUND- Edna Nelson, EDITORS HALL OF FAME-Open, NEWSLETTER EDITOR-Beth Heesacker, NFMS CLUB BULLETINS-Darlene Posthuma, ROCKHOUND OF THE YEAR-Viola Jones, CONSERVATION & AWARD LEGISLATION-Darlene Posthuma, EDUCATION-ALL AMERICAN AWARD- Jim & Libby Spencer, INTERNATIONAL RELATIONS-Bill and Janet Smith, JUNIORS PROGRAM-Open, PROGRAM COMPETITION-Open, PUBLIC RELATIONS-OPEN, SAFETY-Dale Geer, SCHOLARSHIP FOUNDATION-Dee Holland & Rose McArthur, SUPPLIES AND PUBLICATIONS-Tim Hoff, JUDGE TRAINING COMMITTEE-Dee Holland, UNIFORM RULES-Dee Holland (Director), WAYS AND MEANS-Glenn Lee (chair) & Janice Van Cura, WEBSITE-Jack Eads.

THINGS YOU SHOULD KNOW

The **AMERICAN LANDS ACCESS ASSOCIATION (ALAA)** is a 501(c)(4) organization. Its purpose is to promote and ensure the right of amateur hobby fossil and mineral collecting, recreational prospecting and mining, and the use of public and private lands for educational and recreational purposes; and to carry the voice of all amateur collectors and hobbyists to our elected officials, government regulators and public lands managers. Your annual individual membership fee of \$25.00 helps support their activities. Club membership is \$50 per year. Contact: Shirley Leeson, ALAA Vice President, P.O. Box 23, Tendoy, ID, 83468, shirleyleeson@cox.net or beauholland@centurytel.net

The **AFMS NEWSLETTER** is published monthly except Jan-Jul-Aug by the American Federation of Mineralogical Societies. Each NFMS member club should have three people (usually the Pres, Secretary, and Editor) receiving the AFMS Newsletter. If they are not, or if anyone else wants to subscribe (\$4.50 per year). Contact: AFMS Central Off., Steve Weinberger, P.O. Box 302, Glyndon, MD 21071-0302 cebar62@aim.com Make checks payable to "AFMS".

The **NORTHWEST NEWSLETTER** is the official publication of the Northwest Federation of Mineralogical Societies (NFMS) and is usually published ten (10) times per year. This publication is brought to you through your club membership in NFMS. The purpose of the Northwest Newsletter is to keep all NFMS members informed of activities and events pertaining to the business and services of the Federation. The Newsletter is printed and mailed to approximately 3500 homes in six states by Burley Reminder in Burley ID. For matters related to the Newsletter (i.e. content, advertising, etc) contact the **Newsletter Editor**. For matters related to the Newsletter circulation (new members, address changes, etc.) contact **Circulation**.

SHOW COORDINATION. Your Federation provides a free service for NFMS members by listing your show in this Newsletter, on the NFMS website, two magazines ("Rocks and Minerals" and "Rock and Gem") and the on-line Calendar from "Lapidary Journal". Please provide the date and time for the show, the club name and show title (if applicable), the location of the show, and most important a contact person with address, e-mail address and/or phone (e-mail is preferred). Please send your show information four to six months in advance to the **Show Coordination** Chairperson. If you see an error once your show is listed, or if your show is not listed, contact the **Newsletter Editor**.

SAVE STAMPS PROGRAM. NFMS members are encouraged to use and save commemorative stamps. The money generated from the sale of these used (cancelled) stamps is then donated to Cancer Research. The collected stamps can be sent to the **Stamps Chairman**, brought to the NFMS Annual Show or given to your Federation Director in your club.

ATTENTION CLUB TREASURERS**Where to send your money**

To NFMS Treasurer for:

1. Dues and supplies
2. Donations for the general fund
3. Donations to Junior Achievement
4. Advertisement in this Newsletter

Send to: Lyle Vogelpohl, see Treasurer this page.

To NFMS Endowment Fund Treasurer for:

1. Donations to Endowment Fund
2. Memorial contributions

Make check payable to NFMS Endowment Fund, send to Endowment Fund Treasurer.

To NFMS Scholarship Chairperson for:

1. Donations to AFMS Scholarship Fund
2. Memorial contributions to AFMS Scholarship

Make check payable to AFMS Scholarship Fund.

Send to: Rose Alene Mc Arthur (see Scholarship this page).

To AFMS Endowment Fund for:

1. Donations to AFMS Endowment
2. Memorials

Send to: See AFMS Newsletter

To ALAA Treasurer for:

1. Memberships, new and renewals
2. Donations

Make check payable to ALAA

Send to Joyce Hanschu, ALAA Treasurer, 6607 Sturbridge Ln; Canton, MI 48187-2638

NFMS NEWSLETTER AND WEBSITE ADVERTISEMENT

Members, Non-members, clubs, etc. can advertise in the Northwest Newsletter. This service is provided to help defray the cost of printing and mailing the newsletter and is encouraged by the Federation. The only criteria for the ad is that it be hobby related (e.g. rocks, equipment, grit, shows, etc.).

Ads for the Northwest Newsletter are \$1.50 per square inch.

Example: 3" x 4" ad = 12 inches

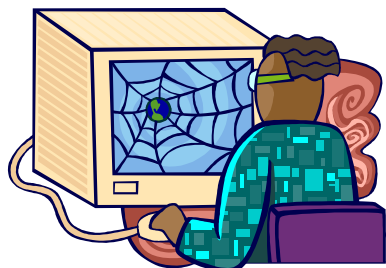
12 inches x \$1.50 = \$18 per issue of the Newsletter
 For an additional 50% of the cost of the Newsletter ad, you can have the same ad placed on the NFMS website for the same length of time. The Newsletter ad must be purchased to receive this additional advertisement.

Do not send ads on colored paper because the back-ground will look gray in the ad. The Editor will send a billing statement to the customer which will include instructions to make payment to the NFMS Treasurer. For more information or questions, call, e-mail or write the **Newsletter Editor**.

To see this newsletter in living color and to see it by the first of the month go to

<http://www.amfed.org/nfms/newslet2.htm>
and click on the month you want to see.

NEWS OF INTEREST



**2011 AFMS Web Site Contest
Webmasters,
Be Sure To Enter!
By Phyllis George
Web Site Contest Chair**

You will be receiving this newsletter around December 1, 2010, and all club webmasters still have plenty of time to enter their club's Web site into the contest! The due date for your federation is listed in the chart below. Please encourage your club's webmaster to enter the contest if he or she hasn't already done so. Your club's Web site will be better for having gone through the process of being judged.

So how does a club Web site enter the contest? The webmaster needs to download a copy of the following three documents: 2011 Entry Form, the 2011 Score Sheet, and the 2011 Score Sheet Guidelines. These forms are all PDF files, and they can be filled out on your computer and saved to your hard drive. Fill out the one-page Entry Form completely, and fill out the top part of the Score Sheet on both pages. When finished, e-mail both forms to your regional federation Contest Committee Chair no later than that federation's due date.

The Score Sheet Guidelines document goes through every item on the score sheet and explains what it is and why it's important to your Web site. EVERY club webmaster (and every contest judge!) should read the Guidelines document closely. These guidelines can help all webmasters tune up their Web site.

These contest files are available on the AFMS Web site http://www.amfed.org/web/website_contest.htm. Make sure you're downloading the 2011 version of these files. Also make sure that you have installed a free copy of Adobe Reader 9 so you can change some of your filled-in answers later if necessary. Adobe Reader 9 is available at <http://www.adobe.com/products/reader/>.

Members of the Web Site Contest Committee and the due dates for entries to their regional federation contests are as follows:

Regional Federation	Contest Chair	E-mail Address	Entry Due Date
California Federation (CFMS)	Merryan O'Neill	mvoneill@comcast.net	01/17/2011
Eastern Federation (EFMLS)	Dan Imel	lapidry@aol.com	02/01/2011
Midwest Federation (MWFMS)	Cindy Root	d-root@sbcglobal.net	01/15/2011
Northwest Federation (NFMS)	Cheri George	lizardwoman3@yahoo.com	01/31/2011
Rocky Mountain Federation (RMFMS)	Phyllis George	pgeorge4@comcast.net	01/15/2011
South Central Federation (SCFMS)	Don Shurtz	don.shurtz@gmail.com	01/15/2011 before 6 p.m.
Southeast Federation (SFMS)	Jim Flora	jimflora@windstream.net	01/15/2011

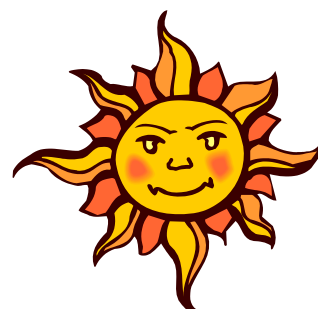
The regional federation judges will give each entrant valuable insight into how to improve his or her club Web site, and they will also tell them what they're doing right. This year all entrants will receive a certificate, and the first place regional federation winners also will receive a plaque awarded by their federation. Federation first and

second places will also receive animated gifs signifying the excellence of their sites for placement on their Web site's home page.

The first place entries will be forwarded to the AFMS level and judged as a finalist. Wes Lingerfelt, our AFMS-level judge for 2011, will give the regional first place winners the benefit of his wisdom, his extensive Web experience, and his knowledge of what works on a Web site and what doesn't. He will analyze each of the sites forwarded to him, and he will give useful feedback on what is being done well and how each site can be improved.

All the contestants participating at the AFMS level will receive a certificate signifying their rank, and the first place winner will also receive an AFMS first place plaque. The top three will also receive animated .gifs for placement on their sites as a symbol of their sites' excellence.

The results of the various regional Web Site Contests will be announced at the annual meetings of the regional federations during their Breakfast with the Editors and Webmasters. The results of the AFMS and EFMLS Web Site Contests will be announced at the AFMS/EFMLS/GMSS joint Show & Convention (July 7-10, 2011) in Syracuse, NY during the Breakfast with the Editors and Webmasters. Hope to see you all there!



**Sunshine Report
From Evan Day**

Joan Day, NFMS Secretary, had a mild stroke (severe TIA?) while we were at a church meeting in Jackson Hole on Oct 10th. She has recovered well, no permanent impairment. Taking Plavix (she was on 4 aspirin per day before), and currently wearing a heart monitor to see if there is any involvement. Then a week ago on Sunday she stumbled going in for coffee after church -- busted foot! Metatarsal behind right big toe. Seems to be healing well. She needs to continue wearing a big ugly velcro boot for another two weeks. Felt well enough to demo beading at the fall gem show in Ogden this past weekend anyway. Prayers are appreciated.



**Lapidary Equipment
Manufacturing Business**

**Name brand lapidary
equipment consisting of:**

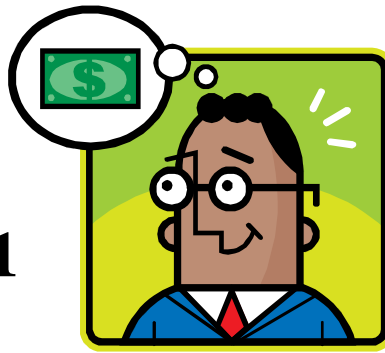
**Rogue brand hydraulic
saws (14, 18, 24, 36 inch)**

- *Large diamond blade
drag saws**
- *Sanders**
- *Polisher**
- *Rock clamps.**

**Call Jerry
503-371-7752**

NEWS OF INTEREST

NFMS DUES ARE DUE JANUARY 1, 2011



Your club should have received a packet of information and forms by the first part of December, 2010. If your club has not received this packet, please let me know right away.

The packet contains three items. The first is a letter of instructions on how to complete the other items in the packet. NFMS dues are \$3.50 for each adult member and \$1.00 for each junior in your club based on your club's membership for the year 2010 - - NOT ON WHO PAYS DUES FOR 2011. The NFMS pays the AFMS \$0,75 for each adult and junior from these amounts. This instruction sheet also contains order information about the 2011 NFMS Directory. The cost remains at \$5.00 each if you wish to purchase your own copy. Each member society receives one free copy each year. The NFMS Directory contains NFMS officer and committee information, all society club and membership information, the NFMS Articles of Incorporation and By-Laws, and the NFMS Program Library information

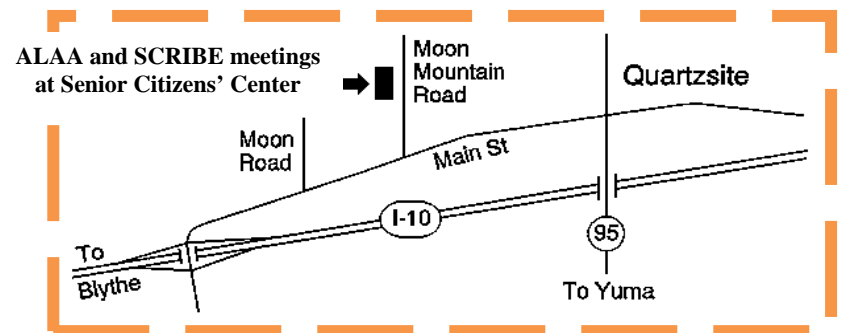
The second item in the packet is a sheet for your club's information. This includes your club's name, website, mailing address, meeting place and time, contact person, and your 2011 officer and committee list. There is space on this form for the names of the three persons in your club to whom the AFMS Newsletter will be sent. I forward those names on to the AFMS. The final items on this sheet are spaces for your club's dues calculations - Adults and Juniors and space for NFMS Directory orders.

The third item in the packet is a listing of your club information, membership names, addresses and telephone numbers that we have in our computer files for the NFMS Directory and NFMS Newsletter mailing list.

This third item is the one that I will ask for your club's assistance on the most. We ask that you please update the list we send your club. Please do not send a copy of your club roster. Think of it this way, the NFMS files contain over 3600 names and addresses. If you send your club roster, they must be checked line by line against our files, a tremendously time consuming task. We ask that you update our list by crossing out names of members who are no longer with your club and list on a separate sheet of paper, names and addresses of those members who moved and names and addresses of your new members who do not appear of the list provided.

Thank you for your help in getting this job done promptly.

Lyle Vogelpohl
NFMS Treasurer



ALAA Meeting in Quartzsite

ALAA, American Lands Access Assn. is having a meeting in beautiful downtown Quartzsite, Wednesday, January 19, 2011 at 9am (Mountain Time, an hour earlier than California Time) This will be at the Senior Center on Moon Mountain Road. ALL are welcome.

The desert will be changing and not for the good of the public, no matter what you enjoy in the desert, large tracts of land will be taken for solar projects and we will lose a number of collecting areas. YOU can help, please attend.

Shirley Leeson, VP ALAA
shirleyleeson@cox.net for additional information

SCRIBE Meeting in Quartzsite

Saturday, 22 January 2011 (9:00 am MST)
Senior Citizen's Center
Moon Mountain Road
Quartzsite, Arizona

S.C.R.I.B.E., the international organization of bulletin editors of amateur gem, mineral, and earth science societies, invites all editors to share ideas, techniques, successes, problems, and concerns with your fellow bulletin editors at its annual workshop and get-together in Quartzsite, Arizona.

Editors are invited to bring copies of their bulletin; original articles, poetry, or puzzles; and write-ups of information or ideas helpful to club editors (50 copies of each item, please) to share with one another. There will be pins, patches, and extra copies of our CD for sale. We'll also have S.C.R.I.B.E. bookmarks and cards.

New editors are especially invited to attend to learn more about S.C.R.I.B.E. and to meet other club and federation editors. "Retired" editors are also urged to attend to share their experiences with the other editors.

A \$2 registration fee per person, payable at the door, will be used to cover expenses. Registration will begin at 8:30 am (Mountain Standard Time), but someone will probably be at the hall between 8:00 and 8:15 am. So if you are an Early Bird, come early, get registered, have coffee, and visit. The meeting generally ends shortly after noon.

For additional information regarding this event, please send e-mail to: Doug Arnold, President (oldjasper@verizon.net) or Bob Hughes, Treasurer (bjhughes@ellijay.com) or Patty Amos, Secretary (packrats2@msn.com).

NEWS OF INTEREST



2011 Inter-Regional Rockhound Rendezvous

by Dick Pankey,
Inter – Regional Field Trips

Central Oregon is known for petrified wood, agate and thunder eggs. If you like petrified wood, agate and thunder eggs, if you like rock collecting, if you like meeting other interesting rockhounds then join us for this 2011 Inter-Regional Rockhound Rendezvous on May 27th to the 30th. This Rendezvous will be to the Hampton Butte green petrified wood area, the Paulina area for pink, green and blue limb casts and to Glass Butte for a big variety of obsidian. Trip logs will be available to 8 to 10 other nearby sites for agate, thunder eggs, jasper and petrified wood for self guided collecting trips. These trips will include: Muary Mtn. jasper, Bear Creek petrified wood, Eagle Rock dendritic/moss agate, Ochoco thunder eggs, and several other petrified wood and thunder egg sites. (I told you that this is a great rockhounding area.)

This Rendezvous will be lead by Doug True and is hosted by the Northwest and California Federations.

We are going to camp on a centrally located private ranch about 35 miles southeast of Prineville, OR. This is a dry camp with no services available. There will be porta potties at camp for those who need them. Motels and RV parks are available in Prineville.

Of course we will have daily happy hours, evening campfires, and a couple of potluck dinners. Doug has lined up several speakers: a USGS geologist to talk about recently discovered calderas in the area; Walt Wright to tell us about what we are collecting and a BLM geologist to talk about the geology of the area.

A flyer with Rendezvous details, directions to camp, a schedule of trips and events, and other useful information will be posted on the AFMS, NFMS and CFMS web sites and newsletters in January.

This trip is open to members and guests of all of the Federations of the AFMS, but I expect most of the attendees will be from the Northwest and California Federations. Everyone who agrees to adhere to the American Federation of Mineralogical Societies Code of Ethics, abide by the direction of the field trip leaders, and practice safe rockhounding is welcome to attend.

Please notify one of the Federation leaders early, but no later than May 20, if you plan to attend; e-mail (or call) if you have questions or need more information. Don't wait – do it now. This will be a great opportunity for rockhounds from all over the west, and all of the Federations of the AFMS, to meet one another, to share stories, and information about collecting in their home areas. Be sure to bring material from your favorite collecting sites to show and share.

Come join us for a great Inter-Regional Rendezvous of collecting, fun and fellowship.

Doug True
Northwest Federation
dtruefossils@yahoo.com
406-670-0506

Richard Pankey
California Federation
dickpankey@juno.com
925-439-7509

This announcement was originally published in the November AFMS Newsletter. This is a great collecting area with a vast variety of material and it is not that far away. Betty and I will be there and hope some other CCM&GS members will join in this great trip. More details will be coming soon.

SOMETHING IMPORTANT JUST HAPPENED

Shirley Leeson, NFMS Historian

For many in the NFMS you might not be aware that one of our large great clubs has gone and a new club has emerged. The Boeing Employees Mineralogical Society and the Boeing Company has severed ties. This was no small feat for the club. They had to rewrite their constitution and bylaws and change the name of the club. Here's what happened in the words of their editor, Keith Alan Morgan:

"This club was founded back in 1949 under the name Seabac Mineralogical Society, then in 1954 it became Boeing Mineralogical Society and in 1956 it became Boeing Employees' Mineralogical Society (BEMS), a name it kept for 54 years and now is the **CASCADE MINERALOGICAL SOCIETY**.

I've heard some members say it is a new club, but that's wrong, it is just a new name. We are the same club we always were, we're just no longer affiliated with the Boeing company and no longer have to go by their rules.

We haven't started over from scratch, we are continuing the existence of the club started back in 1949 and on into the future. Let's make our new name as memorable as the old one." (from their newsletter *The Tumbler*, Oct. 2010)

.....well said



From the Editor's Rockpile By Beth Heesacker

It is almost that magical time of year. Children's eyes start glowing with thoughts of Christmas. I have to admit, I notice the same glow in the eyes of some adults too. Christmas is coming. We spend time preparing the house, the food, the presents, etc. Maybe we even dust off some of our rock specimens to give them a shine for the season.

There are not too many field trips happening but most rock clubs do have a Christmas party of some type. It is a time to relax and enjoy each other's company in a special way.

Hopefully we will also spend some time in service to those less fortunate. Maybe adopting a family for Christmas through your county child services department. Maybe bring a can, or better yet, a bag of food to the Christmas party to be given to a local food bank. Maybe your church or school has a "giving tree" where you take a name and provide a present for someone who is in need. Maybe offer just a smile and a hug for someone you know is hurting due to a family crisis.

I promise you that if you do something for someone this Christmas season that not only will your eyes shine but so will your heart.

PUBLIC LANDS ADVISORY

Outreach to Mining Claimants about Abandoned Mine Hazards



The Bureau of Land Management (BLM) today announced an initiative to reach out to mining claim holders to mitigate abandoned mine hazards. The effort responds to growing concerns about the number of accidents and hazards related to abandoned mines, particularly on the National System of Public

Lands. To assist with this effort, the BLM has identified abandoned mine sites, as well as nearby active claims, using computerized land records and maps.

Nearly 4,000 holders of active mining claims, located mostly in the western U.S. and Alaska, will be contacted by the BLM through the mail to advise them if hazards have been reported within or near the boundaries of their claims. Along with this information, claim holders will be advised of their potential responsibilities if certain mining activities are occurring.

If closing the abandoned sites would interfere with an active mining claim, the BLM plans to contact the claimant to resolve the issues as required by federal regulations. Abandoned mine hazards on active mining claims that are not required for current exploration may be candidates for permanent closure. Active mining claim holders have the right to object to the BLM's proposed closure or mitigation of the abandoned mine hazard, but if they do, they will become responsible for maintaining the mine in a "safe and secure" condition.

This new policy can be reviewed at:

http://www.blm.gov/wo/st/en/info/regulations/Instruction_Memos_and_Bulletins/national_instruction/2010/IM_2010-211.html. Earlier this year, the BLM issued instructions on how the agency will handle mitigation or closure of the abandoned mine hazards (http://www.blm.gov/wo/st/en/info/regulations/Instruction_Memos_and_Bulletins/national_instruction/2010/IM_2010-045.html). In general, the BLM emphasizes that abandoned mine features are potentially hazardous and recommends that mine claimants and members of the public "Stay Out and Stay Alive." The BLM's Washington Office has published answers to many questions about abandoned mine hazards and the responsibilities of holders of active mining claims. For more information, visit the BLM website at www.blm.gov.

IN OREGON

Road Closure Will Affect Access to Benham Falls

Bend, Ore – A road closure will affect visitor's access to Benham Falls from now until May 1, 2011.

An Oregon Department of Transportation closure at the junction of Forest Road 9702 (Crawford Road) and U.S. Highway 97 is in place due to construction activities on a new roadway and bridge for the highway. During construction, visitors will not be able to access Benham Falls. Access to Lava Lands Visitor Center also will be affected; however, the visitor center already is closed and will not reopen until after the construction is completed.

IN IDAHO

Hunters and Recreationists Be Aware of Motorized Restrictions in New Owyhee Wilderness Areas

BOISE, ID – The Bureau of Land Management (BLM) and Idaho Department of Fish and Game are asking all recreationists, including hunters, to become aware of restrictions on using motorized vehicles

and equipment for hunting and other recreational activities within Wilderness Areas. There are six new Wilderness Areas in Owyhee County with the passage of the 2009 Omnibus Public Land Management Act, "The Act".

On the subject of Road Closures, to comply with the Wilderness Act of 1964, BLM is locating and signing wilderness boundary roads, which will remain open to the public. All roads leading into Wilderness Areas will eventually be signed and barricaded. According to the Act, gates will allow passage of motorized vehicles and equipment for emergency purposes, and will also provide grazing permittees access to repair or maintain existing range improvements on a limited and as-authorized basis only.

Hunters and other recreationists accessing Wilderness Areas will not be allowed the use of motorized or mechanized vehicles or equipment. Section 1507(d)(1) of The Act also states, "...all recreational motorized and mechanized off-highway vehicle use [within Owyhee County] shall be limited to roads and trails lawfully in existence on the day before the date of enactment of this Act."

BLM has maps on its website, which can be downloaded, showing where these Wilderness Areas are located in Owyhee County. To view the latest maps of the new Wilderness Areas, go to www.id.blm.gov and click on "Owyhee Wilderness MAPS". The routes on the maps that appear to enter Wilderness Areas are cherry-stem routes that Congress specifically excluded from Wilderness designation. All other routes, whether or not they are currently gated or barricaded, officially end at the wilderness boundaries. Please ensure that you do not enter any Wilderness Area on a closed route.

If you have questions regarding the above information, please call Bruneau Field Manager Arnie Pike at (208) 384-3331, Owyhee Field Manager Buddy Green at (208) 896-5913, or Jarbidge Assistant Field Manager Jill Ralston at (208) 736-2364.

IN MONTANA

Scenic View Road - 1965 Agreement Dug Up Reprinted from Terry Tribune

1965 BLM cooperative agreement with county ensnared in Scenic View Road ownership debate -----By Kay Braddock

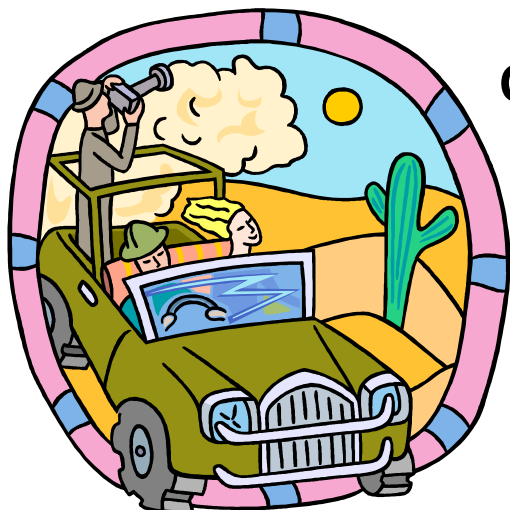
According to Prairie County officials a recent discovery of a 1965 Bureau of Land Management cooperative agreement made between the BLM and Prairie County has added another crinkle to the Scenic View Road ownership debate.

Signed by Prairie County commissioners and the BLM district manager at that time, the 1965 BLM cooperative agreement designates "Badland View Road," currently known as Scenic View Road, as a range improvement project, listing each section of land the road runs through, including state, federal and private lands.

The agreement outlines the county's responsibility to provide continuous normal upkeep and maintenance of the road, specifically listing cattle guards and culverts supplied by Prairie County at that time. County officials also contend the agreement clearly puts ownership of the road in federal hands.

Canceling the "Badland View Road" range improvement In an August 17, 2010 letter, Johnson approved a request made by Michael and Terry Karrels to cancel and abandon the range improvement project known as "Badland View Road" from their BLM file of range improvements. The request had been submitted to the BLM just one month prior to approval. Johnson said the current litigation occurring between Prairie County and the Karrels, regarding Scenic View Road had no influence on the BLM's decision to cancel the range improvement.

QUARTZSITE SCHEDULE



QUARTZSITE CALENDAR OF EVENTS

QUARTZSITE, ARIZONA
SHOW SCHEDULE
2010 - 2011

TYSON WELLS MARKET SQUARE

Oct 1st 2010 - Mar. 30th 2011

Annual RICE RANCH "Yaw! Come" SHOW

Nov 1st 2010 - Feb 28th 2011

MAIN STREET TRADERS *OPEN YEAR ROUND*

Nov 1st 2010 - Feb 28th 2011

HI ALI SWAPMEET

Nov 1st 2010 - Mar 28th 2011

MARKET PLACE SHOWGROUNDS

Nov 1st 2010 - Feb 28th 2011

PROSPECTOR'S PANORAMA

Nov 1st 2010 - Feb 28th 2011

GREASEWOOD SWAP

Nov 1st 2010 - April 1st 2011

DESERT GARDENS 10th. ANNUAL INTERNATIONAL

GEM, MINERAL & JEWELRY SHOW

JAN. 1st 2011 - FEB. 28th 2011

THE MAIN EVENT

Jan. 8th 2011 - Jan. 23rd 2011

Steam Engine Show

TYSON WELLS SELL-A-RAMA

JAN. 21st 2011 - JAN.30th 2011

BIG TENT...SPORTS, VACATION & R.V. SHOW

JAN. 22th 2011 - JAN. 30th 2011

45th Annual Q I. A. POW WOW

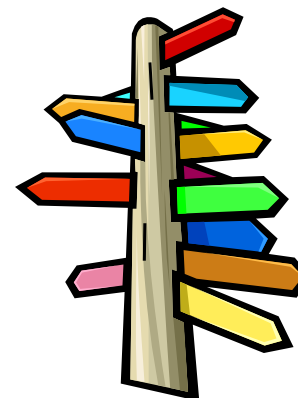
JAN.

BIG TENT...HOBBY CRAFT & GEM SHOW

Feb 2th 2011 - Feb 6th 2011

BIG TENT CLASSIC CAR SHOW

Feb 5th 2011 — Feb 6th 2011



Courtesy of the QUARTZSITE BUSINESS CHAMBER OF COMMERCE

<http://www.quartzsitebusinesschamber.com/calendar.html>



NFMS Member Clubs - Gem and Mineral Show Calendar

Date	Club/Show Name	Show Location	Contact Person
February 12 - 13 Sat 9 - 5, Sun 9 - 4	Whidbey Island Gem Club 46th Annual Sweetheart of Gems Show	Oak Harbor Senior Center 51 SE Jerome Street, Oak Harbor, WA 98277	Keith Ludemann, 360-675-1837 rock9@whidbey.net
February 26 - 27 Sat 10 - 6, Sun 10 - 5	Idaho Gem and Mineral Club	Expo Idaho, 5610 Glenwood St., Boise, ID 83714	Charlie Smith, 208-628-4002 P.O. Box 8443 Boise, ID 83707
February 26 - 27 Sat 10 - 6, Sun 10 - 5	Everett Rock & Gem Club 58th Annual Gem & Jewelry Show	Washington National Guard Armory 2730 Oakes Avenue, Everett, WA 98201	Fritz Mack, PO Box 1615, Everett, WA, 98206, 425-232-0809
March 5 & 6 Sat 10-6, Sun 10-5	Owyhee Gem & Mineral Society 57th Annual Rock & Gem Show	O'Conner Field House 2200 Blaine, Caldwell, Idaho	Carolyn Roberts, 208-466-6191 ncrobertsrp@msn.com
March 11 - 13 Fri 10 - 6, Sat 10 - 6 Sun 10 - 5	Tualatin Valley Gem Club 53rd Annual Rock and Mineral Show	Washington Co. Fairgrounds 873 NE 34th Avenue, Hillsboro, OR (Cornell Road, across from Hillsboro Airport)	Roy Woo, rwoo12648@gmail.com PO Box 641 Forest Grove, OR 97116
March 12 - 13 Sat 9 - 5, Sun 10 - 4	Rock and Arrowhead Club, Annual Show Featuring Petrified Wood	Klamath County Fairgrounds 3531 South 6th Street, Klamath Falls, OR	Jennifer Zimmerlee, jlazys@hotmail.com, 541-545 6773 or Marv Stump 541 882 8341
March 12 - 13 Sat 9 - 6, Sun 9 - 5	60th Annual Gem Show Magic Valley Gem Club	Twin Falls County Fairgrounds, East side of Filer ID on US Highway 30, Filer, ID	Harold Waggoner, 208 423 9668 or Shirley Metts 208 423 4827 rmetts@cableone.net
March 18 - 20 Fri 10 - 7, Sat 10 - 7 Sun 10 - 5	Timpanogos Gem & Mineral Society 52nd Annual Spring Parade of Gems	Spanish Fork Fair Grounds 475 South Main Street Spanish Fork, UT	Keith Fackrell, 801-489 7525 PO Box 65 Provo UT 84601 krfackrell@msn.com www.timprocks.weebly.com
March 26 - 27 Sat 10 - 6, Sun 10 - 5	Sweet Home Rock & Mineral Society 63rd Annual Show, Featuring Fossils	Sweet Home High School Activity Gym 1641 Long Street, Sweet Home, OR	Joe Cota, 541-451-4027 PO Box 2279 Lebanon, OR
April 1 - 2 Fri 8:30 - 6, Sat 9 - 5	Panorama Gem and Mineral Club	Fort Colville Grange Hall, Hwy. 20, Colville, WA	Bill Allen (509) 935-8779 sago@theofficenet.com
April 2 & 3 Sat 10 - 5, Sun - 10 - 4	South East Idaho Gem & Mineral Society	Bannock County Fairgrounds Commercial Bldg Pocatello ID	Kevin B. Taylor, 208-232-4269 246 Washington Avenue, Pocatello, ID 83201
April 8 - 10 Fri 10 - 6, Sat 10 - 6 Sun 10 - 5	Rock Rollers Club 52nd Annual Gem, Jewelry, Rock and Mineral Show	Spokane County Fair & Expo Center North 604 Havana at Broadway Spokane, WA	Gerry Pfeiffer, 509-924-1927 pfeiffer@webband.com
April 9 - 10 Sat 10 - 6, Sun 10 - 5	"Golden" Family Affair - 50th Anniversary, Mt. Baker Rock and Gem Show	Bloedel Donovan Park 2214 Electric Avenue, Bellingham, WA	Wes Gannaway, 360-384-4209, debnwes@comcast.net
April 15 - 17 Fri 9 - 6, Sat 10 - 6 Sun 10 - 4:30	Willamette Agate Mineral Society 56th Annual Show	Polk County Fairgrounds 520 South Pacific Hwy West, Rickreall, OR	Kristi Edwards, 541-738-6811 edwardskk@gmail.com
April 30 & May 1 Sat 10 - 5, Sun 10 - 5	West Seattle Rock Club	Alki Masonic Temple, 4736 40th Ave SW, Seattle, WA	Audrey Vogelpohl, 206-932-3292, avogelpohl@comcast.net www.westseattlerockclub.org
May 14 - 15 Sat 9 - 5, Sun 9 - 4	The Bitterroot Gem and Mineral Society	First Interstate Events Center Ravalli County Fair Grounds 100 Old Corvallis Road Hamilton, MT 59840	Steve Vieth, 406-369-5489 viethsteve88@gmail.com or Mike McConnell, 406-360-4944 micker1949@yahoo.com
June 11-12 Sat 10 - 6, Sun - 10 - 6	Butte Mineral & Gem Club	Butte Civic Center Annex 1340 Harrison Avenue (ext 127 North) Butte, MT	Pete Knudsen, 406-496-4395 PO Box 4492, Butte, MT 59702
July 23 - 24 Sat. 10 - 6, Sun. 10 - 4	Northwest Montana Rock Chucks - 4th Annual Gem and Mineral Show	Flathead County Fairgrounds - 265 N. Meridian Rd., Kalispell, MT	Milahn Gano 406-844-3560 mallard_g@centurytel.net Jim or Vi Hoover 406-862-1316
July 29-31 Fri 10 6, Sat 10-6, Sun 10-5	NFMS Annual Meeting and Show	Southwest Washington Fairgrounds, Chehalis, WA	Chuck Sonner csonner2011@gmail.com



**HAVE A VERY MERRY
AND
BLESSED CHRISTMAS**

