



MWF News

OCTOBER 2014 - ISSUE No. 535

WEB SITE - www.amfed.org/mwf

Member of the American Federation
of



President

Tony Kapta
1483 E. Wood St.
Decatur, IL 62521
217.233.1164
tkapta@comcast.net

1st Vice President

James Marburger
P.O. Box 64
Hickman, NE 68372
402.792.2348
jm24122@windstream.net

2nd Vice President

David Rich
1166 Broadview
Tallmadge, OH 44278
330.630.9625
birdman035@hotmail.com

Secretary

Donna Moore
25235 North State Route 97
Cuba, IL 61427
309.789.6501
MWFSecretary@gmail.com

Treasurer

Sandy Fuller
8445 Grange Blvd.
Cottage Grove, MN 55016
651.459.0343
MWFtreas@Rock-Biz.biz

PRESIDENT'S MESSAGE

by Tony Kapta

Although I still have two months to go in my term as MWF President, this will be my last letter to all of the members of the MWF that is printed in the newsletter. I hope that you found the letters interesting, or least informative, over the last months.

The MWF Convention is almost here. I hope that by the time this is printed, you have your clubs' delegate forms in, and have made plans for attending the show and field trips. I had complete information about the convention in my last letter, and all of the

information and forms are on the MWF website. It sounds like it is going to be a great show; plus a chance to go on a field trip before the show and MWF meetings makes it a great opportunity. Hope to see you all there.



I know that some people think that the MWF is simply an organization that your club has to pay dues to every year. If you have been reading my letters, I hope you realize now that the MWF is here for you. Who are the people who run the Midwest Federation of Mineralogical and Geological Societies? All of us are simply volunteers from our home clubs who have taken on the extra work and expense of helping all of our Midwest clubs to be the best they can be. My home club is the Central Illinois Gem and Mineral Club at Decatur, Illinois; Jim Marburger's home club is Lincoln Gem & Mineral Club at Lincoln, Nebraska; David Rich's home club is Summit Lapidary Club at Cuyahoga Falls, Ohio; Donna Moore's home club is West Central Illinois Rock & Mineral Club at Macomb, Illinois; and Sandy Fuller's home club is Minnesota Mineral Club at Falcon Heights, Minnesota. I think that many also belong to other clubs that are members of the MWF. This continues on to include all of the State Directors and Committee Chairs - we all come from the clubs that we started as members of, before we volunteered to take positions in the MWF. Thank you to all who

CONTENTS

AFMS Scholarship - You Can Help	5
AFMS Contest Winners.....	5
Another Side of the Story	4
Convention Silent Auction	5
Dues & Event Forms Coming in November	7
MWF News Editor	8
President's Message	1,8
Scholarship Honoree for 2015.....	4
Show & Convention Updated Schedule	3
Submission of Articles.....	4
Time to Take Stock of Your Shop.....	4
Upcoming Events	2
Where Do Ratites Come From?.....	6,7

(Continued on page 8)

UPCOMING EVENTS

OCTOBER

- 10-12 WARREN, MI.** Michigan Mineralogical Society's Greater Detroit Gem, Mineral, Fossil & Jewelry Show; Macomb Sports & Expo Center, Building P, 14500 E. 12 Mile Rd.; Fri. 9-6, Sat. 9-7, Sun. 11-5; Contact: Stan Woollams, 734.994.3048, wooll@comcast.net, www.michmin.org/Show.
- 17-19 FT. WAYNE, IN.** Three Rivers Gem & Mineral Society's Annual Show; Allen County Fairgrounds, 2726 Carroll Rd.; Fri. 10-7; Sat. 10-6; Sun. 11-5; Contact: Michele Yamanaka, 260.427.2196, yamanakam@cs.com.
- 18-19 CHICAGO HEIGHTS, IL.** South Suburban Earth Science Club's Annual Rock, Mineral, Fossil and Jewelry Show; Prairie State College gymnasium, 202 S. Halsted St.; Sat. & Sun. 10-5; Contact: Jan Podbielski, 708.625.5876, jan@janskidesigns.com.
- 18-19 DES MOINES, IA.** Midwest Federation Show & Convention; Des Moines Lapidary Society in participation with the Central Iowa Mineral Society Annual Gem, Mineral & Fossil Show; Paul R. Knapp Animal Learning Center, Iowa State Fairgrounds, East University Ave.; Sat. 10-5, Sun. 10-4; Contact: Karen Leibold, 515.205.8875, leibolddsm@mchsi.com or Steven Cunningham, 515.262.4578, steverw90@gmail.com.
- 18-19 COTTAGE GROVE, MN.** Minnesota Mineral Club's Annual Show; National Guard Training & Community Center, 8180 Beldon Blvd.; Sat. 10-5, Sun. 10-4; Contact: Phil, 763.717.1641, info@minnesotamineralclub.org.
- 18-19 SPRINGFIELD, MO.** Ozarks Mountain Gem & Mineral Society's Annual Show; Expo Center, 635 E. St. Louis St.; Sat. 10-5, Sun. 10-4; Contact: Eddie Maples, 417.725.3001.
- 21 WYOMING, MI.** Indian Mounds Rock & Mineral Club's Silent Auction; Wesley Park United Methodist Church, 1150 32nd St. SW; Tues. 7 p.m.-9 p.m.; Contact: Ed Krzeminski 616-530-9571 or Club Liaison, donvandyke@tm.net.

OCTOBER - cont'd

- 24-26: MASON, MI.** Central Michigan Lapidary and Mineral Society's 49th Annual Show; Ingham County Fairgrounds Main Arena, 700 E. Ash St.; Fri. 6-9, Sat. 10-7, Sun. 11-5; Contact: Roger Laylin, 517.349.3249, l.r.laylin@gmail.com, michrocks.org.
- 25-26: CUYAHOGA FALLS, OH.** Summit Lapidary Club's and Akron Mineral Society's Semi-Annual Show; Emidio's & Sons Expo, 48 E. Bath Rd.; Sat. 10-6, Sun. 10-5; Contact: Joyce Kish, 330.753.7081, skish1@neo.rr.com, www.lapidaryclub@outlook.com.
- Oct. 31 – Nov. 2 CLEVELAND, OH.** Micromineral Society of the Cleveland Museum of Natural History's Micromineral Symposium; Cleveland Museum of Natural History, 1 Wade Oval Dr.; Fri. 3-10, Sat. 8:30-5, Sun. 9:30-3; Contact: Dick Green, 330.929.2395, jgreen2@neo.rr.com, www.cmnh.org/site/GetInvolved/clubsandsocieties.

NOVEMBER

- 1-2 STURTEVANT, WI.** Racine Geological Society's Gem & Mineral Show; Fountain Banquet Hall, 8505 Durand Ave.; Sat. 10-5, Sun. 10-4; Contact: John Lowman, 262.554.5370, lowman.john@sbcglobal.net, rgs.wi.tripod.com.
- 1-2 MIDLAND, MI.** Mid-Michigan Rock Club's Annual Show; Midland Convention Center, 1500 W. Wackerly St.; Sat. 10-6, Sun. 10-4; Contact: Dale Foster, 989.837.1829, dale989@sbcglobal.net, www.midlandrockclub.com.
- 10 BLOOMFIELD HILLS, MI.** Michigan Mineralogical Society's Annual Auction; Cranbrook Institute of Science, 39221 Woodward Ave.; Mon. 7 p.m.; Contact: Mildred Hurt, 248.398.6693, hurtmillie@gmail.com.



EONS EXPOSED!!! MWF SHOW AND CONVENTION UPDATED SCHEDULE (SUBJECT TO CHANGE)

DMLS Gem, Mineral & Fossil Show
Paul Knapp Animal Learning Center
Iowa State Fairgrounds
3000 East Grand Avenue
Des Moines, IA 50317

October (17), 18 & 19, 2014

MWF HOST HOTEL: Sleep Inn & Suites
5850 Morning Star Court
Pleasant Hill, IA 50327
Front Desk: (515) 299-9922

by Karen Leibold

Friday, October 17

Breakfast at hotel included with room. Others pay \$5.00.

9:00 a.m. ASSEMBLE: Field Trip to a local gravel quarry. Meet at the Iowa State Fairgrounds, Knapp Animal Learning Center (ALC) parking lot (across the street from the West entrance) to ride-share. The Des Moines area is a massive terminal moraine, so gravel quarries are massive pits of glacial till. (Adults only! Hard hat, boots, etc. suggested.) Please be prompt!

9:15a.m. DEPART on Field Trip.

1:00 p.m. Show Setup begins at the ALC Fairgrounds.

Saturday, October 18

Breakfast at hotel included with room. Others pay \$5.00.

8:00 a.m. Sleep Inn, State Directors' Meeting

9:00 a.m. ALC Fairgrounds, Show Opens

9:00 a.m. Sleep Inn, Executive Meeting

Lunch Break

1:00 p.m. Sleep Inn, Council of Delegates Meeting

5:00 p.m. ALC Fairgrounds, Show Closes

5:00 p.m. ALC Fairgrounds, Set-up for Awards
Banquet & MWF Silent Auction

6:00 p.m. Silent Auction

7:00 p.m. Buffet Dinner

7:30 p.m. Program

Sunday, October 19

Breakfast at hotel included with room. Others pay \$5.00.

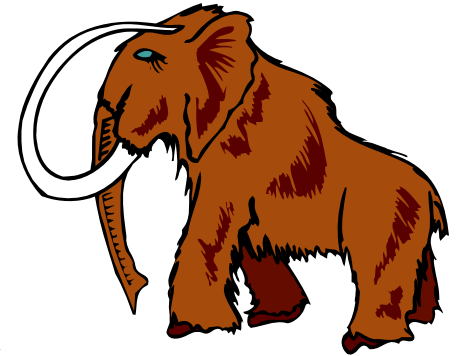
8:00 a.m. Sleep Inn, Editors' Breakfast

9:00 a.m. Sleep Inn, Editors' Meeting

10:00 a.m. Fairgrounds, Show Opens

4:00 p.m. Fairgrounds, Show Closes

4:00 p.m. Tear-down begins



On-your-own field trip suggestions:

The Iowa State Capitol Building:

Free Admission. Tours are scheduled between 8 a.m. and 3:30 p.m. Monday-Friday. Saturday tours are every half hour from 9:30 a.m.-2:30 p.m. The 23 carat gold central towering dome can be seen for miles. The building features many types of local and imported stone, was built by a company that is still in business in Des Moines, has historical murals, a spectacular rotunda, a dramatic marble grand staircase. The location is considered to be the termination of the Des Moines Lobe of the Wisconsin Glacier. A total restoration was completed in 2001.

Iowa's State Historical Museum:

Atrium Exhibit: Mammoth: Witness to Change. In preparation for building the new Allied Insurance and Farmland Insurance parking ramp in downtown Des Moines, support pillars were formed by drilling down to bedrock with an enormous auger and pouring reinforced columns of concrete. On August 14, 2001, the auger struck bedrock—and bone. Construction workers recognized the significance of the discovery and eventually the mammoth bones were donated to the State Historical Museum and are on display in this fascinating exhibit. This exhibit also displays an impressive full-skeleton replica of a Hebior mammoth found in southeastern Wisconsin in 1994.

TIME TO TAKE STOCK OF YOUR SHOP

by David Rich, Safety & Field Trips Chairman

Can you believe it? Fall is here. This is the time of year rockhounds and fossil hunters slowly haul their full buckets of goodies into their little corners in the basements and garage shops. This is also a great time, too, to think about safety first.

1. Check your equipment for broken wires and machines without guards.
2. Make sure you have a ground fault plug on every electrical outlet in your shop, especially when using water and electricity together.
3. Check containers that hold acids or cleaning agents. They should be in a well-ventilated area and the containers should be suitable for the contents. The containers should also be well-marked with what is inside; with use, the labels get faded or just plain messed up.
4. Now would be a good time to clean up from last year. I like to clean, throw away, put back, and reorganize my shop. It is amazing how much better I feel when the snow starts flying and I sit in my safe and well-organized shop.

So take some time look around. I am sure you can find something to make your shop a safer place.

Remember, "Safety is an attitude. Get it or get hurt."

SUBMISSION OF ARTICLES

Material may be e-mailed to Sharon Marburger at mwf.editor@windstream.net, or submitted via the U.S. Mail (see address on page 1). Acceptable e-mail formats include MS Word (.DOC & DOCX), Adobe (.PDF), rich text format (.RTF), or plain text (.TXT). Pictures must be in png, jpg, tiff, or gif format. If e-mailing an article, it may be included within the body of the e-mail message or sent as an attachment. Thank you for your submissions!

ANOTHER SIDE OF THE STORY

by Sharon Marburger

The following excerpt is a portion of what I received in response to my editorial in the September issue of the MWF News, "Editor's Two-Cent's Worth." I print this in fairness to the parties involved. However, I still stand by statement that we are representatives of our organizations, and we should act accordingly. The entire situation was unfortunate. Hopefully, we can avoid such exchanges in the future by club members and Federation representatives communicating calmly, reasonably, and respectfully.

I'm sorry you didn't hear the angry, arrogant exchange between the show chair and [us] outside in the parking lot earlier in the morning. He told us to **MOVE YOUR CAR SO THAT PAYING CUSTOMERS CAN PARK THERE.**

We parked in the handicapped parking area near the entrance to the show -- we do have a handicapped placard. [W]hen we send in pre-registration to any show, regional, national, or local, we always pay for our registration, we do not use a 'get in free' pass even though we usually work at the shows in the judges area and others areas where needed.

To say I was angry at the arrogant behavior doesn't even come close to what I was feeling. You thought he was sincere in his apology, but I didn't think so because of how he had behaved earlier. I was told he only came in to apologize to 'smooth things over.'

If you were appalled at the situation you witnessed, I am sorry. But I'm not sorry for my outburst... . Respectful was not the way we were greeted by the show chairman. We have attended both regional and national shows for years and have never been so disrespectfully treated before, and with such malice.

2015 MWF SCHOLARSHIP HONOREE

If you or your Club would like to nominate someone, or a couple, for the 2015 MWF Scholarship Honoree(s), in recognition of their service to your Club and Community, details are described in the Green Pages of the MWF Directory, on our website www.amfed.org/mwf, or contact David Rich at birdman035@hotmail.com.

YOU CAN HELP (AFMS SCHOLARSHIP)

by Marge Collins

AFMS Scholarship needs \$5000 in donations before November 1, 2014, to maintain the required ratio of donations to grants in order to maintain a "Public Charity" status. Even small donations will add up to meet this need - otherwise a tax will be imposed, resulting in draining resources. This is an unusual situation, brought about by the lowest donations in many years. Could this be a residual effect of "the economy"?

We trust you, as an individual or as a Club, will send an outright donation or a Memorial to bolster the Fund. Memorials are now listed in the MWF Directory and Club participation is also recorded.

Checks made payable to "AFMS Scholarship Fund" should be sent with either a note or the form provided below, to MWF Chair, Marge Collins, 3017 Niles-Buchanan Rd., Buchanan, MI 49107. You will receive an acknowledgement, and a note will be sent to next of kin for a Memorial donation, if that name and address is included.

Donations from Midwest Federation affiliates and individuals, along with those from the other five participating Regions, keep the Fund growing. The interest is currently used for twelve \$4,000 student grants each year (2 per Region). Each student is

working on an advanced degree and is a U.S. citizen. The 2014 MWF recipients, Deserae Wojick and Joshua O'Brien, were introduced in the MWF September *MWF News*. Detailed information about AFMS Scholarship are in the Green Pages of MWF Directory. All gifts to AFMS Scholarship are tax-deductible as allowed by law.

Please direct any questions to margaret@qtm.net (QTM.net). Thank you for helping the Fund grow!

Donor: _____ \$ _____
 Address: _____
 Memorial to honor: _____
 Next of kin: _____
 Address: _____

(individual donors can accrue credit toward a Founders Certificate [\$500.00] or assign credit to their Club)

Assign Credit to: _____

Send check payable to "AFMS Scholarship" to MWF Chair, Marge Collins, 3017 Niles-Buchanan Rd., Buchanan MI 49107.



2014 CONVENTION SILENT AUCTION

By Ed Dvorak, Silent Auction Chairman

Just a reminder about the "EONS EXPOSED!!" show and convention coming up in October at Des Moines, Iowa. The silent auction to benefit the MWF will be held at the Awards Banquet on Saturday, October 18, and we need donated specimens.

Since this silent auction will be limited to those attending the banquet, nicer specimens would be appreciated, however, nothing will be refused. If you have no place to store them, please contact me. If you live close to me, I will pick them up, otherwise, they can be mailed via priority flat rate mail. Thank you for your donations. You may call 402.946.3041 and leave a message or e-mail: ed20649@windstream.net.

Many of you ask why this editor doesn't publish award winners as soon as they are available. In this particular instance, I don't want to ruin the surprise for those attending the MWF Awards Banquet in October in Des Moines. Don't worry, I will publish all MWF winners and MWF winners of the AFMS competitions in the November newsletter.

WHERE DO RATITES COME FROM?

Published in Paleontograph, Volume 3 Issue 3, August 2014

By Bob Sheridan, May 24, 2014

Ratites are flightless birds that live or once lived in the southern continents.

1. Ostrich (Africa)--extant.
2. Elephant bird (Madagascar)--extinct
3. Rhea (South America)--extant
4. Tinamou (South America)--extant
5. Cassowary (New Guinea)--extant
6. Emu (Australia)--extant
7. Moa (New Zealand)--extinct
8. Kiwi (New Zealand)--extant

The tinamou and kiwi are chicken-size; the others are very large, up to 9 feet tall. These birds seem to be linked by common anatomical features. For example, ratites are referred to as paleognaths: they have a fairly primitive palate structure. Assuming all these birds are really related, how did they get where they are in terms of geography? One can imagine two extreme scenarios:

1. Ratites had their current flightless form in Early Cretaceous Gondwana. As the continent split into Africa, South America, etc., the ratites were carried along with them. This is called "continental vicariance."
2. The ancestral ratite could fly. It crossed the ocean and settled down on different continents. Ratite descendants independently became large and flightless.

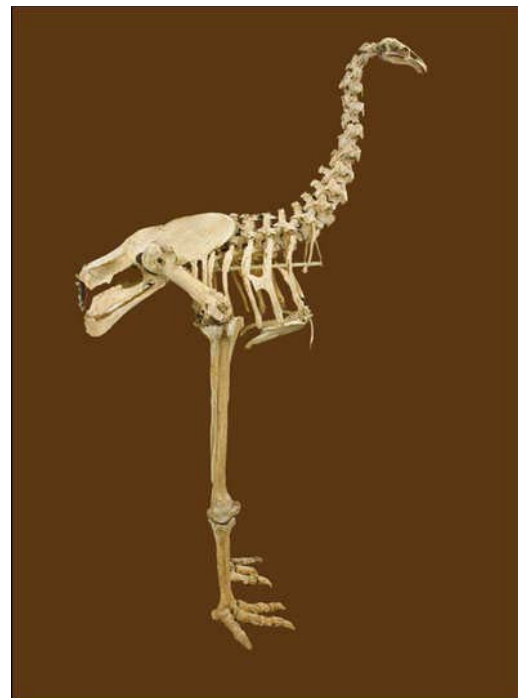


Great Tinamou

The first scenario is simpler and makes a very simple prediction: ratite phylogeny should reflect the time the continents split off: Madagascar from Africa (160 Myr), Africa from the other southern continents

(120 Myr), and New Zealand from Australia (80 Myr), and Australia and South America from Africa (50 Myr). That is, the kiwi should be most closely related to the moa, the rhea should be most closely related to the tinamou.

The elephant bird should be the most different from the other birds. The second scenario would also make a prediction: ratites could be in different stages of flightlessness. In fact, the tinamou is not completely flightless and has a keeled sternum, which implies its recent ancestors might have been strong fliers.



Moa Skeleton

Many anatomical comparisons seem to support the first scenario. However, anatomical comparisons have their limits, the most important of which has to do with convergence: different animals can have similar features just because they have the same "jobs," not because they are closely related. An alternative approach to deriving phylogenies is to use molecular information, i.e. comparing the DNA of the animals. Until recently we could do this only with extant animals. However, nowadays it is quite routine to sequence the DNA from the bones of extinct animals if they have been extinct less than tens of thousands of years, especially for mitochondrial DNA (which is more chemically robust and exists in many copies per cell).

The elephant bird and the moa have been extinct only a few hundred years, so this is no problem.

(Continued on page 7)

RATITES - CONT'D

(Continued from page 6)

Molecular phylogeny also has the advantage in that there is an intrinsic “clock”; we can roughly predict how many base changes will occur in a given time. Molecular phylogenies are usually consistent with anatomical phylogenies, but sometimes there are big surprises, as in today’s story.

A recent paper (Mitchell et al., 2014) compares the mitochondrial DNA of the ratites, including the extinct ones. The relatedness of some of the ratites by DNA is completely at odds with their current locations: The elephant bird and the kiwi are very closely related. The tinamou is related to the moa. The rhea and the ostrich are not closely related to any other ratite. The only relationship that does make geographic sense is that of the emu and cassowary (they are both in the south Pacific). Also, by the molecular clock the oldest split (the ostrich from other ratites) occurred only 75 Myr.

If this observation holds up, it completely rules out continental vicariance as an explanation of the origin of ratites, and it better explains why the kiwi and tinamou are small, and the tinamou not quite flightless. A final interesting suggestion from the authors has to do with size. It is a general rule that only smaller animals survive mass extinctions. It seems more likely that ratites would survive the Cretaceous-Tertiary extinction if they were small at the time of the extinction and grew bigger only later.

Sources:

Mitchell, K.J.; Llamas, B.; Soubrier, J.; Rawlence, N.J.; Worthy, T.H.; Wood, J.; Lee, M.S.Y.; Cooper, A. “Ancient DNA reveals elephant birds and kiwi are sister taxa and clarifies ratite bird evolution.” *Science* 2014, 344, 898-900.

See you in
Des Moines!

2015 DUES AND EVENT FORMS COMING IN NOVEMBER

by Sandy Fuller, MWF Treasurer

The 2015 Midwest Federation forms for renewing club memberships will be coming in the November *MWF News*. Watch for them! Meanwhile, please alert club officers to begin collecting information for the forms.

One important piece of information needed is the total number of individual adult and youth members during your most recently completed year. You will need these figures for dues and insurance calculations. The rationale is that your total membership is usually very similar from year to year, so you always pay the current year’s dues based on your most recent experience. The treasurer needs this information before January 15 so dues can be submitted on time.

The secretary will provide a roster of current officers, including each preferred mailing address, phone number, and e-mail address. Please clearly state where the newsletter should be sent for the club. If an individual does not want this information published, there will be a place to indicate it on the form. However, please provide us with contact information so we (MWF Officers) can reach you. Also, please send any changes of address to Donna Moore.

Show and event chairs will provide details on their upcoming activities. If this information is submitted with the dues, we will make sure it gets to our website, newsletter, and directory. If it is submitted later, or separately, it is more likely to get overlooked.

In recent years, we have offered an electronic subscription to Diamond Dan publications to clubs with youth members (you must pay dues for the youth) if your renewal is received on time. It is very important that we have a name, position, phone number and e-mail address for the person designated to receive this subscription on behalf of the club.

Finally, and probably most important to many, the rates for 2015 will be the same as the 2014 rates. Dues will be \$2.00 per adult and \$.50 per youth. Insurance will again be \$3.75 per individual to be covered by the policy. Please include all active members (attended or participated in an activity during the past year) when computing your insurance premium.

Sharon Marburger, Editor
Midwest Federation of Mineralogical and Geological Societies
mwf.editor@windstream.net
402.792.2348
P.O. Box 64
Hickman, NE 68372

Non Profit Org
U.S. Postage
PAID
Fiatt, IL
Permit No. 1

MWF NEWS EDITOR

by Sharon Marburger

I have been the editor of the MWF News since being appointed by Rose Blue back in March of 2009. I think it is time for me to step down and let someone else have the pleasure of providing news and information to our member clubs.

Now, there is no need to panic! I told my husband, president-elect Jim Marburger, that I would continue as Editor through his administration. However, if you feel compelled to step forward at any time during the next year, please do so.

I requested to take on the Editor position because I felt it was something I needed to do for the Midwest Federation. I am glad I did, as I have learned far more about our hobby than I would have otherwise. I have made many friends across the country, and I treasure those friendships. But, I have so many other duties with my local club, in addition to holding down a full-time job, that I am finding it more and more difficult to keep up with everything. I would like to leave the position while the newsletter is still in good shape, rather than allowing it to deteriorate.

Please ask the MWF Board of Directors to consider you as a viable candidate to take over as Editor. Once you have been selected, I would be happy to assist by proofreading the newsletter prior to publication.



PRESIDENT'S MESSAGE - CONT'D

(Continued from page 1)

have volunteered, it is because of your commitment to the MWF, that makes the MWF work.

Now, if we could only get more of our club members to help out, locally as well as in the MWF positions - what an even greater time it would be. It seems that only a few people in each club do the majority of the work of running a club. All club members should be looking for areas in each club where they can help out, and this continues on to the MWF. If you are asked to be a chairman for one of the positions in the MWF, please say yes. Better yet, contact the president of the MWF and offer your help. There are always spots that are vacant.

As I have said before, the only reason the MWF is here, is to help all of the clubs of the Midwest be the best that they can be, and we can only do that if everyone pitches in and helps.

It has been a pleasure and a privilege to serve as your president this past year. I hope that the communication between clubs will continue and grow.







