



MWF News

APRIL 2014 - ISSUE No. 531

WEB SITE - www.amfed.org/mwf

Member of the American Federation of Mineralogical Societies



President

Tony Kapta
1483 E. Wood St.
Decatur, IL 62521
217.233.1164
tkapta@comcast.net

1st Vice President

James Marburger
P.O. Box 64
Hickman, NE 68372
402.792.2348
jm24122@windstream.net

2nd Vice President

David Rich
1166 Broadview
Tallmadge, OH 44278
330.630.9625
birdman035@hotmail.com

Secretary

Donna Moore
25235 North State Route 97
Cuba, IL 61427
309.789.6501
MWFSecretary@gmail.com

Treasurer

Sandy Fuller
8445 Grange Blvd.
Cottage Grove, MN 55016
651.459.0343
MWFtreas@Rock-Biz.biz

PRESIDENT'S MESSAGE

by Tony Kapta, President

Hello Everyone,

Well, the weather seems to be testing us this year. It is now the beginning of March and I may be seeing a hint of warmer weather, or at least a lack of snow here in the middle of Illinois. So maybe a new year of field trips is about to begin relatively soon. Yeah!

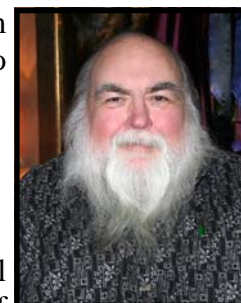
Club shows have begun and that is always a great time to see new specimens and renew old relationships with people we have met over the years in our hobby. Great times.

As I have said before, we are working on putting together a history of the MWF. I think this is important as it makes it easier to see into the future by looking at what has happened in the past. I have selected some of the highlights that have occurred in

the MWF and AFMS past, and am putting them here for everyone to see where we have come from.

Brief History of the MWF (1940 – 1960)

In March 1940, several members discussed the possibility of forming a regional federation like those in California (1935) and the Northwest (1938). On September 22, a trip to the strip mines near Wilmington, Illinois was held, and during the lunch hour, a committee composed of Larry T. Brezan, Frank L. Fleener, George Huss, Bryant Mather, Arthur L. Peck, and Ben Hur Wilson as Chairman, was appointed to organize the federation. Mr. Mather, Assistant Curator of Mineralogy at Chicago's Field Museum of Natural History, would draft a constitution.



On December 7, 1940, about twenty delegates from five organizations met in the Art Room at the Field Museum and the MID-WEST FEDERATION OF GEOLOGICAL SOCIETIES became a reality. Its purpose: "To achieve a more accurate and widespread knowledge and appreciation of geology, in all its phases, especially in the Mid-West, through the co-operative endeavor of individuals and organizations in this region."

CONTENTS

Burgess-Like Fossil Discovery	4
Garnet [January Gem of the Month]	7,8
MWF Convention (2014).....	5,6
President's Message	1,3,4
Program Library	4
Submission of Articles	2
Upcoming Events.....	2

(Continued on page 3)

UPCOMING EVENTS

APRIL

- 5** **LOVES PARK, IL.** Rock River Valley Gem & Mineral Society's Gems, Minerals, Fossils and More Open House; North Suburban Library, 6340 North 2nd St.; Sat. 11-3; Contact: John Wood, 815.978.6960, gotwood63@gmail.com.
- 5-6** **CANTON, OH.** Stark County Gem & Mineral Club's 47th Annual Gem & Mineral Show; Stark County Fairgrounds, 305 Wertz Ave. NW; Sat. 9-5, Sun. 10-5; Contact: Barry Heiks, 330.868.4047, bjheiks@frontier.com.
- 5-6** **COLUMBUS, OH.** Columbus Rock & Mineral Society's Annual Show; Northland Performing Arts Center, 4411 Tamarack Blvd.; Sat. 10-6, Sun. 11-5; Contact: Craig Kramer, 614.436.4511, craig.kramer@wowway.com, www.ColumbusRockAndMineralSociety.org.
- 5-6** **LINCOLN, NE.** Lincoln Gem & Mineral Club, Inc.'s 56th Annual Show; Lancaster Event Center, 84th & Havelock; Sat. 9-6, Sun. 10-5; Contact: Charles Wooldridge, 402.416.3233, charles.wooldridge@nebraska.gov, www.lincolngemmineralclub.org.
- 5-6** **MARION, IL.** Southern Illinois Earth Science Club's Gem & Mineral Show, Pavilion of the City of Marion, 1602 Sioux Dr.; Sat. 10-6, Sun. 10-5; Contact: Mike Chontofalsky, 618.532.0455.
- 12** **NORTH LITTLE ROCK, AR.** Central Arkansas Gem, Mineral, & Geology Society's Rock Swap; Elder Johnson Pavillion, Burns Park, I-40 Exit 150; Sat. 9-5; Contact: Mike Austen, 501.868.4553, steelpony@aol.com, www.centralarrockhound.org.
- 12-13** **CANTON, IL.** Fulton County Rockhounds' Annual Show; Wallace Park, 250 S. Ave. D; Sat. 9-5, Sun. 10-4; Contact: Steve Holley, 309.231.8861, ilfossil@hotmail.com or Deb Coursey, 309.368.2947, courseyfarm@gmail.com.
- 12-13** **EAU CLAIRE, WI.** Chippewa Valley Gem & Mineral Society's Annual Show; The Expo Center, Lorch Ave.; Sat. 9-5, Sun. 10-4; Contact: Paul Tubbs, 715.834.5747. bizpam1@charter.net.

APRIL - cont'd

- 26-27** **DECATUR, IL.** Central Illinois Gem & Mineral Club's 63rd Annual Mineral, Gem & Jewelry Show; Macon County Fairgrounds, 3700 Westlawn Ave.; Sat. 9-6, Sun. 10-4; Contact: Tony Kapta, 309.830.6516, cigmc@comcast.net.

MAY

- 3-4** **CINCINNATI, OH.** Geofair 2014, Cincinnati Mineral Society's and the Cincinnati Dry Dredgers' 49th Annual Gem, Mineral, Fossil, and Jewelry Show; Cincinnati Gardens, 2250 E. Seymour Ave.; Contact: Terry Huizing, 513.574.7142, or tehuizing@fuse.net, or www.geofair.com.
- 3-4** **MARSHFIELD, WI.** Heart of Wisconsin Gem & Mineral Society's 41st Annual Gem, Mineral, Fossil, & Jewelry Show; Marshfield High School Field House, 1401 E. Becker Rd.; Sat. 10-5, Sun. 10-4; Contact: Cynthia Kelman, 715.387.8782, kelman@tzn.net.com, www.fromtherockroom.com.
- 16-18** **JOPLIN, MO.** Tri-State Gem & Mineral Society's Spring Rock Swap; Schifferdecker Park, 7th & Schifferdecker Ave.; Fri. & Sat. 9-6, Sun. 9-3; Contact: Chris Wiseman, 417.623.1180, jmc-cwiseman@sbcglobal.net.
- 17-18** **NORTH OLMSTED, OH.** Parma Lapidary Club's Annual Show; Soccer Sportsplex, 31515 Lorain Rd.; Sat. 10-5; Sun. 10-5; Contact: Sue Zaborowski, 440.213.1153.

SUBMISSION OF ARTICLES

Material may be e-mailed to Sharon Marburger at mwf.editor@windstream.net, or submitted via the U.S. Mail (see address on page 1). Acceptable e-mail formats include MS Word (.DOC & DOCX), Adobe (.PDF), rich text format (.RTF), or plain text (.TXT). Pictures must be in png, jpg, tiff, or gif format. If e-mailing an article, it may be included within the body of the e-mail message or sent as an attachment. Thank you for your submissions!

PRESIDENT'S MESSAGE - CONT'D

(Continued from page 1)

1941

A federation bulletin, *The Mid-West Geologist* had Ben Hur Wilson as editor. The first Convention was held October 18-19, 1941, at Milwaukee Public Library Museum, with Wisconsin Geological Society as host

1945

A new magazine, *Earth Science Digest*, noted that "...over 75 per cent of the new discoveries in the fields of mineralogy and paleontology have been made by amateurs armed only with picks, hammers, and a vast amount of patience."

1946

An exchange of correspondence between Dr. B. H. Wilson and Dr. Richard Pearl of Denver led to a meeting in Ottumwa, Iowa. Here they began the groundwork for a nationwide federation, and each of the four Regional Federations (Rocky Mountain had formed in 1941) was asked to appoint an Advisory Member to the organizing committee. Alger R. Syme represented MWF (now with eight member clubs), and was named chairman of the Constitution Committee.

To more accurately reflect the members' interests, it was decided to add "Mineralogical" to the Federation name, making it MID-WEST FEDERATION OF MINERALOGICAL AND GEOLOGICAL SOCIETIES.

The Midwest Geologist, official bulletin of the MWF, made its debut in January.

1947

In June, two delegates from each federation met at Salt Lake City to create the "American Federation of Mineralogical Societies." Delegates from MWF (now with 11 member clubs) were Ben Hur Wilson and Alger Syme. Mr. Wilson was elected president of the new national organization. At MWF's convention August 23-25, 1947, action was taken to ratify the AFMS Constitution, making MWF the first member. Michigan Mineralogical Society hosted this convention at Cranbrook Institute of Science in Detroit.

1948

The first American Federation convention was June 13-16 in Denver, and MWF travelers could get there in a special 54-passenger "Convention. Car" on the Rock Island Railroad's Rocky Mountain Rocket. Leaving Chicago on June 12, stops included Joliet, Rock Island, Iowa City, Des Moines, Council Bluffs, Burlington, and Omaha.

1949

At the business meeting in the Davenport Museum, it was voted to adopt the formal Articles of Incorporation, and the Constitution, with the name MIDWEST FEDERATION OF MINERALOGICAL AND GEOLOGICAL SOCIETIES. Dues would remain \$1.00 per each member of each society. Banquet attendees received "a choice clam shell favor," and took part in a lively auction "to add to the Federation exchequer." All individuals and clubs had been asked to contribute material for the auction.

1950

Twenty societies now belonged to MWF. The tenth annual convention was the first joint convention of MWF and the AFMS (and their 3rd annual meeting). Wisconsin Geological Society did the honors June 28-30, with show and meetings at Milwaukee Municipal Auditorium and banquet at Hotel Schroeder.

1952

A bimonthly MIDWEST NEWS BULLETIN was begun so all the member clubs could have a "mutual exchange of ideas and opinions and program activities."

Earth Science Digest resumed publication in July, with five Midwest members at the helm -- Ben Hur Wilson, Russell MacFall, J. Daniel Willems, B.J. Babbitt, and William Allaway. Delegates to the convention endorsed the magazine as the official publication of MWF. Club activities were reported in each issue, and subscriptions were \$2.00 per year (6 issues).

(Continued on page 4)

PRESIDENT'S MESSAGE - CONT'D

(Continued from page 3)

1956

There were now 42 adult clubs and 1 junior society in the MWF.

The combined MWF/AFMS Convention was July 12-15 at State Fairgrounds in St. Paul, the Minnesota Mineral Club hosting.

1960

There were 90 clubs, about 4,500 members, and MWF boundaries were set: Michigan, Ohio, and Indiana, Illinois, Wisconsin, Minnesota, Iowa, Missouri, and the eastern half of Nebraska, South Dakota and North Dakota.

As you can see, our organization has had a great start and growth in the first twenty years of its existence. Of course, this is just a short list of the things that I deemed as most important in the history of the MWF. We will have the entire history ready for our 75th anniversary next year.

Remember that our spring meeting is coming up in May, so all State Directors and Chairmen of the Permanent Committees should be getting started on reports for the meeting and getting them to Donna Moore so that she can have them ready for the meeting. I am looking forward to seeing you all there.

LOOKING FOR PROGRAMS FOR CLUB MEETINGS - OR FOR A STUDY GROUP?

Does your club use DVDs or VHS presentations? Have you looked at the list of programs available from MWF Program Library in the MWF Directory - or on the Federation website? You pay the Federation only \$5.00 and the return postage and insurance. That's a lot less than buying a DVD! There are programs about minerals, field trips, "rocks and gems" and much more! There are programs for club meetings, study groups - or individuals interested in specific topics such as wire wrap, intarsia, silversmithing, metal clay, etc. A new updated list will be in the 2014 Directory which will be sent out soon (and extra copies will be available from the Director of Supplies). Pat Powers, Librarian, has asked that all requests for programs be sent by mail or e-mail - no phone requests can be taken at this time.

BURGESS-LIKE FOSSIL DISCOVERY IN CANADA

By Donald Baumgartner

This new discovery was published in February. It is an amazingly rich early Cambrian fossil site, and worth reading the news stories and examining the many photos.

A treasure trove of fossils chiseled out of a canyon in Canada's Kootenay National Park rivals the famous Burgess Shale, the best record of early life on Earth, scientists say. The new site is also in the Burgess Shale formation, and seems to rival the 1909 original in fossil diversity and preservation, researchers report Tuesday in the journal *Nature Communications*. In just two weeks, the research team collected more than 3,000 fossils representing 55 species. Fifteen of these species are new to science. The new fossils were spotted in a mountain cliff, in Marble Canyon, about 26 miles southeast of the original Burgess Shale site.

<http://www.rom.on.ca/en/blog/mighty-burgess-shale-fossil-site-discovered-in-kootenay-national-park#comment-73536>

<http://www.scientificamerican.com/article/mother-lode-of-fossils-discovered-in-canada/?print=true>

<http://www.foxnews.com/science/2014/02/11/mother-lode-amazingly-preserved-fossils-discovered-in-canada/>

<http://www.livescience.com/43264-gallery-amazing-cambrian-fossils-from-canada.html>

<http://www.cbc.ca/news/canada/calgary/new-fossil-bed-found-by-scientists-hailed-as-motherlode-1.2531990>

<http://www.nbcnews.com/#/science/science-news/mother-lode-well-preserved-fossils-discovered-canada-n27736>

<http://www.dailymail.co.uk/sciencetech/article-2557233/Researchers-uncover-epic-new-fossil-site-Canada-say-reveal-dinosaurs-travelled-far-thought.html>

<http://www.rom.on.ca/en/about-us/newsroom/press-releases/rom-researchers-discover-epic-new-burgess-shale-site-in-canadas>

<http://www.artsci.utoronto.ca/main/newsitems/new-burgess-shale-site>

<http://www.rom.on.ca/en/collections-research/rom-staff/jean-bernard-caron>

2014 MWF CONVENTION

by Karen Leibold

MWF Convention PRELIMINARY SCHEDULE

**Paul Knapp Animal Learning Center
Iowa State Fairgrounds
3000 East Grand Avenue, Des Moines, IA 50317**

Friday, October 17

9:00 a.m.: DEPART: Field Trip to a local gravel quarry, and another location to be announced later. Meet at the Iowa State Fairgrounds, Knapp Animal Learning Center parking lot (across the street from the West entrance) to ride-share.

The Des Moines area is a massive terminal moraine, so gravel quarries are massive pits of glacial till! Several possibilities are in the works for our other destination location – stay tuned!

1:00 p.m.: Show Setup begins

Saturday, October 18

8:00 a.m.: Sleep Inn- State Directors' Meeting

9:00 a.m.: Fairgrounds - Show Opens

9:00 a.m.: Sleep Inn - Executive Meeting

Lunch Break

1:00 p.m.: Sleep Inn - Council of Delegates Meeting

5:00 p.m.: Fairgrounds - Show Closes

7:00 p.m.: Fairgrounds - Awards Banquet

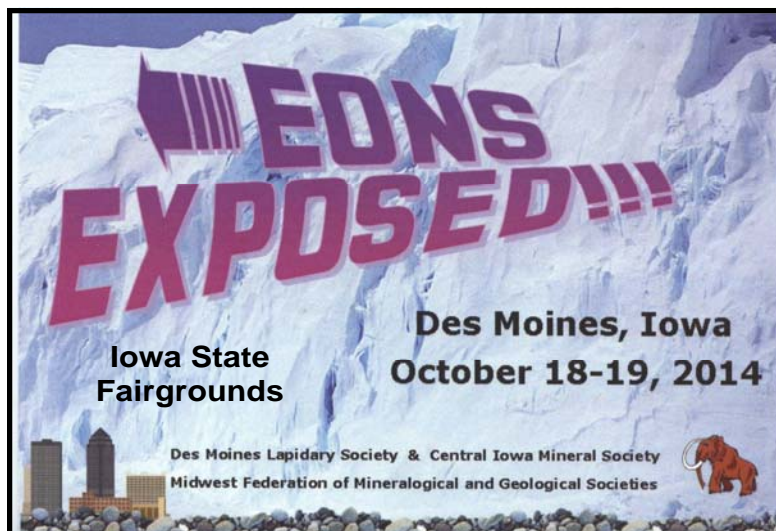
Sunday, October 19

8:00 a.m.: Sleep Inn - Editor Breakfast

9:00 a.m.: Sleep Inn - Editors' Meeting

10:00 a.m.: Fairgrounds - Show Opens

4:00 p.m.: Fairgrounds - Show Closes



October	Reserve	Communicate	Gorge
Des Moines	Hotel	Learn	Spillway
Iowa	Camp	Keokuk	Layers
Lapidary	Explore	Manson	Devonian
Gem	Jumble	Mahaska	Capitol
Fossil	Cobble	Lobe	Gold
Mineral	Boulder	Geode	Marble
Show	Laker	Food	Stone
Mammoth	Dig	Fun	More
Sloth	Terminal	Honor	
Professor	Moraine	Appreciate	
Glacier	Tooth	Tour	
Tall	Fossil	Where	Eons
Exhibit	Fern	Surprise	Exposed
Compete	Find	Shop	!!
Programs	Sort	Talk	COME!
Register	Delegate	Flood	

****On your own field trip to the Iowa State Capitol Building. Free Admission. Tours are scheduled between 8 a.m. and 3:30 p.m. Monday-Friday. Saturday tours are every half hour from 9:30 a.m.-2:30 p.m. The central towering dome can be seen for miles, and is 23 carat gold. The building features many types of local and imported stone, was built by a company still in business in Des Moines, has historical murals, a spectacular rotunda, and a dramatic marble grand staircase. A total restoration was completed in 2001.**

EONS EXPOSED!!!!

Des Moines Lapidary Society – Central Iowa Mineral Society

HOSPITALITY

HOTEL INFORMATION

Host Hotel - \$98.99 + taxes, per night. Includes hot breakfast.

Sleep Inn & Suites
5850 Morning Star Court
Pleasant Hill, IA 50327
Front Desk: (515) 299-9922

This hotel is an easy 3 mile drive East of the Fairgrounds on University Ave, at the Hywy 65 interchange. All MWF meetings will take place on Saturday in the hotel's meeting room. The Saturday evening banquet will be held in the showroom at the fairgrounds.

**Ask for the Des Moines Gem & Mineral Show (at the Fairgrounds) discount.
Reserve your room soon – two other large events on the same weekend!**

OTHER HOTELS IN VICINITY OF IOWA STATE FAIRGROUNDS

The Econolodge is located on the West edge of the Iowa State Fairgrounds. Downtown hotels are 4 miles West of Fairgrounds and accessed by I-235. Altoona hotels are 8 miles Northeast of Fairgrounds in the vicinity of the Prairie Meadows Casino and Adventureland Resort, on I-80.

ECONO LODGE INN & SUITES FAIRGROUNDS

410 E 30th Street
Des Moines, IA 50317
1-800-230-4134

EMBASSY SUITES DES MOINES DOWNTOWN

101 East Locust St.,
Des Moines, IA 50309
1-800-997-5149

HOLIDAY INN EXPRESS HOTEL & SUITES

165 Adventureland Dr.,
Altoona, IA 50009
1-800-230-4134

BEST WESTERN PLUS ALTOONA INN

300 34th Ave. Nw,
Altoona, IA 50009
1-800-997-5148

ADVENTURELAND RESORT HOTEL

3200 Adventureland Dr
Altoona, IA 50009
(515) 265-7321

PRAIRIE MEADOWS CASINO HOTEL

1 Prairie Meadows Dr.
Altoona, IA 50009
(515) 957-3000

CAMPGROUNDS

IOWA STATE FAIRGROUNDS CAMPGROUND

Off-season Camping Rates (effective 1/1/ 12): \$25 / night
To contact the Campgrounds' office, call 515/262-3111 x284.

ADVENTURELAND RESORT - CAMPGROUND

Off Season (10/1-10/31) \$25/night
<https://adventureland-inn.com/lodging/campground/>
515-265-7321

TOURIST INFORMATION

<http://www.catchdesmoines.com/>

SHOW DATES:

MWF Fieldtrip – Friday, October 17
Gem, Mineral & Fossil Show – Saturday & Sunday

GARNET [JANUARY GEM OF THE MONTH]

written by Sakina Bharani, G.G.
Printed in the January 2014 issue of West Suburban Lapidary Club's newsletter, The Opal (submitted by Lee Herrera)

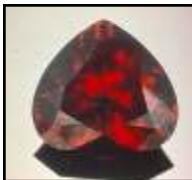
The name Garnet is derived from the Latin for grain because of the rounded crystals and similarity to red kernels of pomegranate. Garnets are a group of differently colored minerals containing silicates that have been used since the Bronze Age as gemstones and abrasives. The garnets form under conditions of high temperature and/or high pressure. The members of this group share a common crystal form (dodecahedral) and degree of similarity in their chemical composition. This group provides classic examples of isomorphous replacement, meaning minerals with similar ionic properties which are interchangeable and form an isomorphous series. The series can be continuous between the two members. The two such series are:

PYRALSPITE SERIES: almandite (almandine), pyrope, spessartite.

UGRANDITE SERIES: grossularite, andradite, uvarovite.

Within the series are also mixed members.

Almandite [almandine] is most frequently encountered garnet. It typically occurs in mica schists. The name is derived from the town in Asia Minor. Deposits are found in Brazil, India, Madagascar, Sri Lanka, Czech Republic, Austria and USA. The most typical inclusions in almandine are numerous fine needles that intersect at 110° & 70°. If these inclusions are particularly dense, a correctly oriented cabochon will reveal a weak four-rayed star.



Pyrope was named after a Greek word for fire. It was most popular fashion stone in 18th & 19th century. It is also called "Bohemian Garnet." Deposits are found in Burma, China, Madagascar, Sri Lanka, South Africa, Tanzania and USA. It is sad to note that this richly colored stone is not widely used in modern jewelry.



Rhodolite is purple red or rose color garnet, between pyrope and almandine in composition.

Rhodolite is most widely accepted within the gem and jewelry industry.

Spessartite is rather rare garnet that occurs in manganese-rich metamorphic environments. Finest facet grade material originates from granitic pegmatites. "Mandarin Garnet" is the trade name for a



superb orange hued spessartite that is mined in northern Namibia. Nigeria, as well as central and east Africa, are important sources but none of these can match the beauty of pure vibrant orange spessartite of Namibian origin. The crystals are generally fragmented and finished stones in excess of five carats are very rare. Another example of replacement of minerals provides a combination of almandite and spessartite giving us a dark orange colored spessartite called "Malaia Garnet" (in Ki-Swahili language means -out of the family).



Grossularite is the calcium-aluminum garnet, which forms in metamorphic environments. The purest available specimens of this garnet are virtually colorless. However such specimens are rare. Presence of different trace elements result in wide range of colorful sub varieties such as:

Hessonite (cinnamon garnet) is a yellow brown, orange or orange-red grossular.

Tsavorite a fine emerald green garnet colored by vanadium is the most important sub variety of grossular. The crystals are invariably shattered during retrieval process and therefore cut stones tend to be small, rarely more than five carats.



Merelani mint garnet is bright transparent green grossular that occurs in association with Zoisite at Merelani mines in Tanzania.

Mali garnet is a brown, olive green or yellow garnet from Mali, is a combination of grossular-andradite.

(Continued on page 8)

Sharon Marburger, Editor
Midwest Federation of Mineralogical and Geological Societies
mwf.editor@windstream.net
402.792.2348
P.O. Box 64
Hickman, NE 68372

Non Profit Org
U.S. Postage
PAID
Fiatt, IL
Permit No. 1

GARNET - CONT'D

(Continued from page 7)

Hydroglossular was originally considered a sub-variety of glossularite. However in 1984, was identified as proper mineral and named "Katoite". This garnet is available in pink, green and colorless varieties.

Leuco garnet is a colorless sub variety, found in Canada, Mexico and Tanzania.

Andradite is a calcium-iron rich garnet which forms in metamorphic environment. The examples of Andradites are:

Demantoid is the most important form of andradite. The name is derived from its adamantine luster. Demantoid has a remarkable brilliance and dispersion. At its best it has fine grass-green hue. On the downside is fairly soft for its use in rings and cut stones seldom exceed two carats. The sources are the Ural Mountains in Russia and Namibia.



Topazolite is a misleading name applied to small yellow andradite crystals found in Ala valley in Italy and near Zermatt, Switzerland.

Melanite is jet black form of Andradite that has found its use in mourning jewelry. It was especially popular in Victorian times.

Uvarovite was named after a Russian statesman. Uvarovite is consistently green garnet and has a beautiful emerald green color. Deposits are found in Russia (Urals), Finland, India, Canada, Poland and California. Mineral samples are much sought after by collectors for their outstanding brilliance and color.



HOW ABOUT SOME TRIVIA!!

- ◆ Garnet is the January birthstone.
- ◆ It is the Connecticut State mineral.
- ◆ It is the New York state gemstone.
- ◆ Star garnet is the state gemstone of Idaho.

Resources: Wikipedia: The Gemstone Handbook by Arthur Thomas Gemstones of the World by Walter Schumann