

EFMLS NEWS

Volume 43, Number 4
February, 2006

Information for members of the Eastern Federation of Mineralogical & Lapidary Societies



You and your club members
are cordially invited to attend
one or both of the
EFMLS Workshops at Wildacres
May 22 - 28, 2006
September 11 - 17, 2006

Join us for a week of
learning, friendship, fun and sharing

Couvert: \$320 per person
Casual attire

more details on page 6

WILDACRES - JOIN US FOR A GREAT EXPERIENCE

by Steve Weinberger
Functioning Committee Chair

Quite frankly, I don't know why more people don't take advantage of the wonderful opportunity that EFMLS Wildacres offers.

The Eastern Federation has held workshops at the Wildacres facility for 33 years now and each session offers those who attend new and exciting experiences.

The Wildacres facility is incredible! It's nestled on its own mountain top just off the Blue Ridge Parkway about an hour from Asheville, North Carolina. The buildings are modern and comfortable with private rooms, a variety of craft shops, comfortable porch and patio seating areas, and much, much more.

The Wildacres atmosphere is casual and comfortable. Our teachers, many of whom have been volunteering their time at Wildacres for many years, are all dedicated, enthusiastic, talented and patient.

You'll find a listing of the classes we're offering this year on pages 7 and 8. Come join us and our guest speakers - Helen Serras Herman in Spring and Tom Tucker in Fall - for a week of fun, learning and sharing. We think Wildacres is a winner! Come share it with us.

ON THE INSIDE

EFMLS & Change.....	2	Slide & Video Programs.....	5
Editor's Corner	3	Safety First.....	6
Region IV Vice President.....	3	New EFF Chair	6
Scholarship News	4	Wildacres Classes.....	7
Federation Dues	4	Wildacres Application	9
Club Rockhound of Year.....	4	2006 Information Form10	
Eastern Foundation Fund	5	EFMLS Committees	11
All American Club Award.....	5	EFMLS Club Shows	12

EFMLS OFFICERS 2005-2006



WAYNE SUKOW
PRESIDENT

<wsukow@earthlink.net>

FRAN SICK
1ST VICE PRESIDENT

<Fran_andEd@webtv.net>

ELLERY BOROW
2ND VICE PRESIDENT

207-547-3154

MARY BATEMAN
SECRETARY

<mbateman1@verizon.net>

LOU BUDELL
TREASURER

<labudell@dreamscape.com>

MILLIE HEYM
ASSISTANT TREASURER

<rockclub@tampabay.rr.com>

CAROLYN WEINBERGER
EDITOR

PO Box 302
GLYNDON, MD 21071-0302
410-833-7926
<cscrystals2@verizon.net>

Deadline is the first of each month prior to publication date (i.e. Feb. 1 for March issue). No issue is normally published during July or August.

Non-commercial reprint permission granted unless otherwise reserved.

EFMLS AND CHANGE

by Wayne Sukow, EFMLS President



Can it be nearly one year since the EFMLS 2005 show in Sayre, PA? It was a great show and I know that the tradition of such shows is not going to change thanks to new clubs stepping forward to host the shows. It's not too early to begin getting ready for the 2006 EFMLS Show in Palm Beach, Florida scheduled for November. Let's have a record year for the number of competitive exhibits; let's keep those EFMLS Wildacres trained and certified judges busy.

What changes have you noticed in our hobby? Do the good changes outnumber the not so good changes during the past year? Here are some that I see.

Good Changes:

- We have an EFMLS show site for the next three years; that's not always been the case.
- Thanks to EFMLS Wildacres we have a supply of qualified judges for competitive exhibits.
- Tucson, Denver, Quartzsite, Federation and club shows as well as Ebay give us great access to high quality specimens if you are willing to pay the price; this seems to be partial compensation for the difficulty some clubs have in arranging field trips.
- EFMLS Wildacres workshops continue to be self-supporting with nearly 50% new enrollees for each of the past three sessions.

The Not So Good:

- Overall, club membership seems to be declining. How can it be reversed?
- Overall, individual club shows seem to be fewer judging from the lists printed in the popular hobby magazines and comparing them to earlier years. Is this accurate or are fewer clubs sending the information to the Lapidary Journal and Rock & Gem?
- Judging from reading numerous club newsletters it appears that the number of club field trips is declining. Yet, at the same time the EFMLS has not had a Conservation & Legislation Committee chair for more than a year. Many were asked and many declined. How can this be reversed?
- Some club newsletters indicate that clubs are having trouble getting club officers. Why is this?
- There is great difficulty in getting people to serve on and chair EFMLS committees. Why? New people need to volunteer. New ideas are needed.
- More collections appear to be sold through dealers rather than being given to grandchildren. How can we engage our youth in the hobby on a club, state, regional and national level?

How do we maintain The Good Changes and minimize or get rid of the Not So Good?

When I began this message I was going to stop at the comments above but time to do some more thinking convinced me to add this section.

- Of course, you, the club members are key to maintaining **The Good Changes** and minimize the **Not So Good**. Regular attendance at club meetings is a good start.
- Club programs that regularly feature interesting speakers and activities support regular attendance. So, if you're asked to give a program consider it an honor and invite your friends.

continued on page 3

•With all the expertise club members have outreach to other groups is another way to interest new members. Again, when another group such as the Scouts, 4-H, church groups, or civic organizations ask you (your club) to give a program consider it an honor and a way of letting your passion for the hobby show.

•Don't wait to be asked to be a club officer, a club committee chairman, or an EFMLS officer or committee chairman; volunteer and learn new things, make new friends, and help the hobby so it'll be viable when your grandchildren are ready to join.

If you have a reaction to things I've said and wish to add some or if you take issue with some of my comments, hey just send me an email. For me it is difficult to prepare an article for the EFMLS newsletter and never know if its read, if my comments are on target, or if they really miss the mark. As I said, hey just send me an email <wsukow@earthlink.net>.

Wayne

NEW REGION IV VP

from Fran Sick, 1st VP

I'm pleased to announce that Region IV (Delaware, Maryland and Virginia) has a new Regional Vice President. He's **Carl Miller**, Immediate Past President of EFMLS and member of the Richmond Gem & Mineral Society.

Carl succeeds **Jennie Smith** who resigned due to personal problems. We thank her for her long-time dedication to the region and Federation. Carl will serve out the remaining months of Jennie's term of office.

EDITOR'S CORNER

by Mary Bateman, BEAC Chair

Congratulations are in order for **Mitch Portnoy** who has been editor of the New York Mineralogical Society's *Bulletin of the New York Mineralogical Society* for ten years--1996-2005. Mitch joins the other members of the Decade Club, a list of those editors who have been editors of their newsletters for ten or more years.

If you are not already a member of the Decade Club and have been an editor of your newsletter for ten or more years, please let me know so that you can become a member of the Decade Club. Also, this year we would like to honor the editor who has edited their newsletter for the longest period of time. If you have been editing your newsletter for 15 or more years, please let me know your name, club, newsletter name and the number of years you have been editor.

February is an "in-between month." The holidays are over and it is too early for field trips. Activities of most clubs are still at a low because of the weather. You are sitting there wondering what to put into this month's newsletter. You don't have to write all the articles for the newsletter. With a little planning ahead, you can ask members of your club to do so. Here are a few suggestions that can be used for February or any month of the year:

Have someone in your club write an article about this month's birthstone, or your state stone. Ask them to include how it came to be the chosen stone, the properties of the stone and what it is used for (i.e., diamonds are used for cutting).

Ask a club member who has an expertise in a certain area to write an article about their expertise or how they became that expert.

Have the president or membership chairman write an article about a long-time club member or one who

should be recognized.

How about someone

writing up that field trip? It could be someone who has never been on a field trip before giving their views or a veteran field tripper writing their point of view.

Did a member of your club go on a collecting expedition over the holidays? Ask them to write an article about their adventure.

Has something exciting, dramatic, funny or unusual happened to the club, at a meeting or to someone in the club?

If you did not include an article and registration form for Wildacres in your January issue, why not do it for the February issue. Wildacres is a great benefit for club members and they can learn about it through your newsletter.

In case you missed it, the point being made is that there is a lot to put into any newsletter, however, it is a matter of getting those articles written. You don't have to do it all. If you ask someone and they say they do not have writing skills, ask them to write the article and you will edit it to make it readable. Sometimes someone's outline can make a terrific article. It may not happen though if you don't ask.

Happy valentines day.



AFMS SCHOLARSHIP FOUNDATION REPORT

by Bob Livingston, EFMLS Coordinator

As your receiver of donations to this hobby-great cause, I am pleased to state that if donations continue as these first two months, I am confident we will have a nice strong showing for 2006. Excellent and thanks to you all below. Since my last report, here is the activity:

Straight Donations:

*Central Pennsylvania
Rock & Mineral Club*
new club donation level - 1000%

Wendell and Jo Ann Mohr
with credit to
Gem, Lapidary & Mineral Society
of Montgomery County, MD
new club donation level - 8,000%

Memorial Donations:

*Southern Maryland
Rock & Mineral Club*
in memory of Paul Smith and
William Petrie

Shirley Greenberg
in memory of Ned Reynolds
with credit to
Mid-Hudson Gem & Mineral Club
new club donation level - 1400%

Shirley Greenberg
in memory of Paul Smith
with credit to
SE New Hampshire Mineral Club
new club donation level - 9700%

Barbara Sky
in memory of
Paul Smith and Ned Reynolds
with credit to
Micromineralogists of the
National Capital Area
new club donation level - 300%

Reivan Zeleznik
in memory of
Ned Reynolds and Paul Smith
with credit to
Stamford Mineralogical Society

Reivan Zeleznik

in memory of
Richard Rebbert and Angelina Lima
with credit to
Stamford Mineralogical Society

Cynthia Payne

in memory of
Paul Smith
with credit to
Micromineralogists of the
National Capital Area

Bob and Joan Livingston

in memory of
Ned Reynolds
with credit to
Gem & Mineral Society of Syracuse

Snowing or not snowing, the mail comes to me daily, so please keep those donations coming with your check made out to AFMS Scholarship Fund, and send to: Bob Livingston, AFMS Scholarship Coordinator, 59 Ely Drive, Fayetteville, NY 13066.

FEDERATION DUES

from Lou Budell

Has your club paid its 2006 Federation dues yet? Not sure? Check the mailing label on this newsletter. If it says "05" then your info form and dues check have not yet been received. For your convenience we've printed a form in this issue.

Please remind your club treasurer to send in the information requested along with your club check for dues. Doing so will enable your club to continue being covered by EFMLS insurance if you've subscribed receive programs from our extensive library, take part in federation programs such as Wildacres and continue receiving this newsletter.

AFMS CLUB ROCKHOUND OF THE YEAR

from Cathy Gaber, AFMS Chair

The Mississippi Gem & Mineral Society's choice for AFMS Club Junior Rockhound of the Year is fourteen year old **Jamie Summers**. Growing up as a "river rat", wading the shallow waters of the



Pearl with her Dad in search of petrified wood, Jamie became an "official" rockhound in 2001 when she joined MGMS. She has a passion for fossils and the many types of rocks she finds in the Mississippi creeks, but she also enjoys helping her Dad as Hospitality Chairman for the Society. At monthly meetings she helps serve the goodies brought by club members, and throughout the show, Jamie sees to it that our workers and dealers are well fed, but food is not her only contribution. She spent several days prior to the show at the workshop helping to paint and spruce up the exhibit cases and was as diligent in helping to put the show together. In addition to her rockhound activities, Jamie is a hard worker and good student in the 8th grade at Pearl Junior High School and an active member of St. Jude Catholic Church in Pearl. She enjoys outdoor activities and sports and has participated in volunteer projects such as collecting and delivering prepared food to homeless shelters and helping with the Annual Tootsie Roll Drive for a local mental retardation center. Jamie is one of our most active members, always ready and willing to join in any project.

submitted by Janie Hand, President

Happy Valentine's Day



EASTERN FOUNDATION FUND NEWS

by Joy Bourne

Belated Happy New Year Greetings, and best wishes to all of our clubs for another growing and successful year in 2006.

The closing months of 2005 did not bode as well as we would have liked for the Eastern Foundation Fund. However, contributions to the Fund have begun to pick up, and we are pleased to report the receipt of gifts from the following individuals and an EFMLS clubs during the closing months of 2005.

The Catawba Valley Rock and Mineral Club of Hickory, North Carolina made a generous first-time donation in memory of deceased member, Ernest Koeberling.

Mrs. Cynthia Payne, of Bethesda, MD sent a memorial contribution in honor of Paul Smith.

Clyf and Joy Bourne, of Towanda, PA, sent their annual gift to the EFF; this year in memory of Alice Bowman, Ned Reynolds and Paul Smith.

We sincerely thank all those who remembered their special EFMLS com-

rades by honoring them with gifts of support for our own Eastern Foundation Fund. As you know, all money received by EFF is used to generate funding for Eastern Federation special projects. In this manner, our departed members continue to work for the benefit of our the organization in which they devoted their time, energy and talents during their lifetimes.

But, contributions to the EFF do not necessarily need to be memorial contributions, either. All contributions received, including memorial contributions, are recorded to the credit of the club designated by the donors for the purpose of special recognition at the next EFMLS convention. This year, EFF presentations will be made at the EFMLS Convention in mid-November at West Palm Beach, Florida.

May we look forward to meeting you there as we recognize your club's special contributions to the building of the Eastern Foundation Fund? We hope so!

Joy

ALL AMERICAN COMPETITION NEWS

by Hazel Remaley

Greetings to all of you out there. Since I am writing this at the end of the year, I am still in the holiday mode. But, hopefully like you, I will be able to get down to some serious work immediately. Much to be done in the very near future.

I hope that you are busy working on you scrapbook entries. Remember, they are due to me on February 20th. If you have questions, Please, please, contact me.

One point that I forgot to mention to you. If you send the book to me through the USPS, ask for

the "book" or "media" rate. Mailing is much cheaper that way, but it will take a bit longer in transit.

A short note this month. Remember, I'm waiting!!

So you will have no excuse, like not knowing my address, phone #, or email, let me refresh your memory.

Hazel Remaley
3298 Centerville Rd.
Gillett, PA 16925-9016
570-888-7544
northridge@infoblvd.net

NEW PROGRAMS AVAILABLE

from Rick Harrison

The EFMLS Program Library is pleased to announce the addition of the following new programs. You can order these for your club at no charge other than return postage and insurance. Contact Rick Harrison (info can be found in the January Newsletter or in the EFMLS Directory).

Video programs:

V579 Those Fabulous Thundereggs, Part 2 by Doug Moore and Lee Kabat in VHS format.

V579A - DVD Format

V579B - PowerPoint Format

V580 Sedimentary & Vein Agates by Doug Moore in VHS Format.

V580A - DVD Format

V580B - PowerPoint Format

V581 The Art of Gem Cutting by Fac-Ette Mfg. in DVD Format. This is a long one at 124 minutes.

Slide Programs:

#112- Exploring Meteorite and Tektite Mysteries by NASA/CORE. 80 slides

#113- Sedimentary & Vein Agates by Doug Moore. 128 slides.

#114- Mysteries of Fossil Preservation by Cecilia Duluk. 62 slides (gift from the AFMS Endowment Fund 2004).

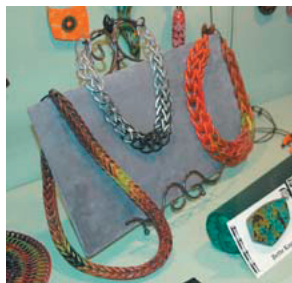


SHOW SAFETY

The sites we select for Gem, Mineral, and Fossil Shows can range from a small local exhibit in a Fire Hall, Mall, or Shopping Center to an International Exhibit in a Major Museum or Exhibition Center. In addition to ensuring that the public enjoys the exhibition, the promoters of the exhibit have a responsibility to all participants that they return home safe and healthy.

The initial step insuring a safe show is the selection of the exhibition facility. It must meet local, State, and National Codes. Do not exceed the floor load (weight) limits, capacity of individuals allowed in the facility at one time, or electrical capacity. The aisle widths and space should allow the public adequate access to the exhibits and dealers, including enough room for handicapped devices such as wheel chairs and electric carts. The facility must have adequate space for the expected number of patrons, including enough parking, including for the handicapped. At large shows there may be a requirement for traffic control and security and this may be provided by the shows sponsors, a security contractor, or local police. The facility must meet the requirements of the American Disabilities Act, with access ramps, disabled bathroom facilities, etc.. Adequate numbers of well lighted and identified emergency exits must be available. Inside and outside lighting should be adequate for viewing the exhibits and to provide security.

Make sure that required licenses, fees, and liability insurance are obtained for the show and



by the dealers and food vendors. Food vendors must meet the standards established by the local health department.

While setting up the exhibits and dealers booths, make sure that the tables are rated for the weight they will be holding. Properly secure heavy, sharp, or hazardous materials (including dangerous chemicals or minerals containing them) so that they will not fall or come in contact with the viewing public. Even small specimens can be a safety hazard in the hands or mouths of children. [Ed Note: It is also essential to double check to see that the table legs are sturdy and "locked" into place properly so they don't collapse.]

Make sure that electrical cords are heavy enough for the service required and are grounded. Properly secure the cords so that they do not present a trip hazard and will not be run over by vehicles or other equipment and become damaged and an electrical shock or fire hazard.

Lighting should be properly ventilated and spaced to reduce heat build up. Material used to decorate the facility should be fire retardant and meet local fire codes.

Display case lids should be provided with positive supports that cannot be knocked out if bumped by mistake when the case is open. Lighted cases should be ventilated to prevent heat build up and potential fire.

Proper lifting and transporting practices should be followed while bringing in and out and setting up and tearing down the exhibits and equipment. These areas should be isolated from the public by ropes or tape during this time.

During the show, keep obstacles such as packages and packing material



secure so as to not create a trip or fire hazard.

Ensure that all appropriate safety precautions associated with demonstrations are followed, such as the wearing of safety equipment, and that proper equipment set up and operation are followed, to keep the exhibitor and public safe and to demonstrate proper safety precautions as well as the purpose of the demonstration.

NEW EFF CHAIR

from Wayne Sukow

I am pleased to announce the addition of the newest member of our EFMLS Committee Chairs. He's *Jerry Lorengo*, a member of the Northern Virginia Mineral Club.

Jerry has accepted the position of Chairperson of our Eastern Foundation Fund and he's eager to start receiving your personal or club contributions. See page 11 for contact information.

My thanks to Joy Bourne for doing such a phenomenal job in chairing the committee for the past several years. Under her guidance and through your generosity, the fund has grown. See her EFF article on page 5 of this issue.

WILDACRES CLASS OFFERINGS

from Al DeMilo, Director

Here is the listing of classes we currently plan to offer at the two EFMLS Wildacres Workshops for 2006. When you send in your application form, be sure to specify your class preference. We will make every effort to honor your 1st or 2nd choice, but should a class be filled, we need to know your other preferences. An application form is included elsewhere in this newsletter and will be accepted beginning January 1 for both sessions. The earlier you register, the better your chance of being assigned to your first choice.

SPRING SESSION - MAY 22 - 28, 2006

CLASS	INSTRUCTOR	DESCRIPTION
Faceting	Reivan Zeleznik	You CAN do it! The mystery of faceting is out the window! Like hundreds of other "never before" faceters Reivan has worked with at Wildacres, you will take home a gem you've created with your own two hands. And it will be better in quality than 90% of the gems (other than diamonds) in your local jewelry store. Spend a week with Reivan and enjoy unlocking your untapped talent. 4 day class.
Cabochons	Bernie Emery	Hands on instruction will be given to show how to transform a rough piece of rock into a shiny well formed cabochon. The use of a trim saw as well as techniques to grind, sand and polish the stone into a standard size and shape will be covered. Slabs will be provided, but you may use your own with instructor's approval. 2 day class offered both semesters.
Exhibiting & Judging	B. Jay Bowman	Return to the roots of EFMLS Wildacres by participating in the Exhibiting & Judging class with the inimitable Jay Bowman. There will be four days of discussion moderated by Jay along with real judging -experience questions that participants have had or have heard about. Discussions are spirited and this is complemented by some practice judging of exhibits prepared by Wildacres participants...often with a deliberate flaw to keep you on your toes and alert. Then hear the debriefing...what an experience! 4 day class.
Silversmithing - Basic	Richard Zollweg	Students will learn basic skills to make jewelry. Among the techniques taught are sawing, filing, soldering, bending and polishing. 2 day class. 1 st Semester
Silversmithing - Intermediate	Richard Zollweg	Students will use basic silversmithing skills, learn new ones and create more advanced jewelry items. Prerequisite: soldering, filing, basic silversmithing skills. 2 day class. 2 nd semester.
Pewter Fabrication	Bruce Gaber	Learn to make functional and decorative objects from a wonderfully versatile metal. Pewter is easy to work and easy to solder. This allows one to make a variety of forms in a much shorter time than working in silver. Pewter can be finished in everything from a glossy, high luster to a deep rich matte. The surface can be further embellished by embossing and the addition of an etch or patina. Join Bruce to explore this most ancient and traditional material. Oh, and by the way, modern pewter contains no lead. 4 day class
Micromounting	Carolyn Weinberger	Micromounting is the art of preparing small mineral specimens so they can best be viewed under a microscope. You will learn how to trim off excess material, mount your specimen on a pedestal and then a small box. 2 day class offered both semesters or can be taken as a 4 day class
Beadcraft - Basic	Mia Schulman	Learn how to form knots between beads (essential for pearls and attractive for other beads) and how to finish necklaces using a variety of clasps. We will also work with wire and beads to form "flower" pendants. Time permitting, the "netting" stitch will be taught which is useful in making chokers, necklaces and decorating Christmas balls. Wear what you finish for your trip home. 2 day class. 1 st semester.
Bead Weaving	Mia Schulman	We'll create a pin (or pendant) using the Peyote stitch which can be used to fabricate amulet bags, necklaces, bracelets and even pictures. Equally important, you will be able to "read" and even design your own pattern. If time permits we will learn the Square stitch which is very useful for bracelets or work on a spiral rope necklace. 2 day class. 2 nd semester.
Wirecrafting - basic	Lisa Roberts	Learn the basics of twisting gold-filled and sterling silver wire to create wonderful wire-wrapped jewelry. 2 day class. 1 st semester.
Wire Sculpture	Lisa Roberts	More advanced projects utilizing skills learned in the basic class. Prerequisite: Basic wirecrafting skills. 2 day class. 2 nd semester.

Fall classes are on the next page

WILDACRES CLASS OFFERINGS
continued

SPRING SESSION - SEPTEMBER 11 - 17, 2006

CLASS	INSTRUCTOR	DESCRIPTION
Faceting	Steve Weinberger	You CAN do it! The mystery of faceting is out the window! Like many other "never before" faceters Steve has worked with at Wildacres, you will take home a gem you've created with your own two hands. And it will be better in quality than 90% of the gems (other than diamonds) in your local jewelry store. Spend a week with Steve and enjoy unlocking your untapped talent. 4-day class.
Cabochons	TBA	Hands on instruction will be given to show how to transform a rough piece of rock into a shiny well formed cabochon. The use of a trim saw as well as techniques to grind, sand and polish the stone into a standard size and shape will be covered. Slabs will be provided, but you may use your own with instructor's approval. 2 day class offered both semesters.
Exhibiting & Judging	B. Jay Bowman	Return to the roots of EFMLS Wildacres by participating in the Exhibiting & Judging class with the inimitable Jay Bowman. There will be four days of discussion moderated by Jay along with real judging -experience questions that participants have had or have heard about. Discussions are spirited and this is complemented by some practice judging of exhibits prepared by Wildacres participants...often with a deliberate flaw to keep you on your toes and alert. Then hear the debriefing...what an experience! 4 day class.
Silversmithing - Basic	Richard Meszler	Students will complete several projects geared to teaching and learning the basics of silversmithing - annealing, bending metal, soldering, piercing and polishing. 2 day class. 1 st semester.
Silversmithing - Intermediate	Richard Meszler	Students will use skills learned in the basic class to complete a bezel set cabochon pin/pendant. Prerequisite: soldering, filing, basic silversmithing skills. 2 day class. 2 nd semester.
Silversmithing/Forging/ Fold Forming	Richard Zollweg	Students will fabricate items using hammers and stakes. Then, they will learn how to texture and polish the items to make lovely jewelry. Minimal soldering is required. 2 day class offered both semesters.
Micromounting	Carolyn Weinberger	Micromounting is the art of preparing small mineral specimens so they can best be viewed under a microscope. You will learn how to trim off excess material, mount your specimen on a pedestal and then a small box. 2 day class offered both semesters or can be taken as a 4 day class
Introduction to Precious Metal Clay (PMC)	Cathy Gaber	Precious Metal Clay is fine silver embedded in a clay. The clay is shaped into various forms, then fired in a kiln causing the clay binder to burn off leaving only the silver. You'll learn how to use the material as you make a variety of small objects. 2 day class. 1 st semester
Beaded Bezels	Cathy Gaber	Cabochons do not always have to be set in metal. Learn to make unusual bezels for cabochons using beads of all kinds. It's a great way to exercise your creativity. The sewing technique is suitable for making pins, bolas, earrings, and other types of jewelry. All work will be fully finished with a leather backing and an appropriate finding. Bring your own cabochons of any shape, size or color or contact the instructor in advance to purchase cabochons. 2 day class. 2nd semester.
Wirecrafting - basic	Lisa Roberts	Learn the basics of twisting gold-filled and sterling silver wire to create wonderful wire-wrapped jewelry. 2 day class. 1 st semester.
Wire Sculpture	Lisa Roberts	More advanced projects utilizing skills learned in the basic class. Prerequisite: Basic wirecrafting skills. 2 day class. 2 nd semester.
Soapstone Carving	Inga Wells	Learn how to create small carvings from a soft material. Minimal tools are used to achieve lovely results. Let the object hidden in the stone come alive under your hand. 2 day class offered both semesters.

SEE PAGE 9 FOR AN APPLICATION

**VISIT THE EFMLS WEBSITE <WWW.AMFED.ORG>
 FOR MORE INFORMATION ABOUT WILDACRES**

2006 EFMLS Wildacres Registration

PLEASE, ONLY one person per form per session

CHECK ONE: May 22 - 28 _____ September 11 - 17 _____

Please fill out a separate registration form for each person attending and return to DEBBIE BARD, Registrar at 8085 Old 126, Warfordsburg, PA 17267. No registration will be accepted prior to January 1, 2006. (To make it easier for the registrar and others, please do not change or revise this form. You may photocopy it as needed.)

Name (as you wish it to appear on your name badge): _____

Street: _____ City: _____ State: _____ Zip: _____

Telephone number with area code: _____ e-mail: _____

Club/Society Affiliation: _____

Fee for each session is \$320.00 per person. Deposit is \$160 per person, payable with registration.
Make checks payable to "EFMLS". Balance of \$160 is due 30 days prior to start of session.

Cancellation policy: If unable to attend, fees paid will be refunded if notification is given prior to one month before the session begins. No refund will be made after that date.

Circle appropriate responses:

Have you been to Wildacres before? Yes No Is your Club sponsoring you? Yes No

Name of roommate: _____ (If none, one will be assigned).
Are you: Male Female (No single rooms are available). Are you a smoker? Yes No

Do you have any physical handicaps and / or special dietary needs? Yes No
If YES, please explain on reverse side.

Do you have material for exhibiting that you would be willing to display at Wildacres? Yes No
If YES, please contact Steve Weinberger <cscrystals2@verizon.net>. Lined display cases are available.

Do you have a skill to demonstrate or a program to share (up to 40 minutes)? Yes No
If YES, please contact Cathy Gaber at <bg@his.com>, or 301-654-7479.

Class Pre-registration.

See EFMLS Newsletter or Website for class offerings. <www.amfed.org/efmls/wildacres.htm>

Which of the classes being offered would you like to take? We will be preregistering you for classes you indicate. When a class is full NO others will be assigned to that class, and you will be assigned your next class choice(s). No class placement is guaranteed.

1st _____ 3rd _____

2nd _____ 4th _____

(No registrations accepted prior to January 1, 2006)

Mail to: Debbie Bard, Wildacres Registrar
8085 Old 126
Warfordsburg, PA 17267

If you have any questions, please contact either Debbie Bard, Registrar at <debbard@frontiernet.net> or 717-294-3667 or Al DeMilo, Director at <abdemilo@aol.com> or 301-262-6014.

2006 EFMLS Club Information Form

Please type or print clearly. Be sure to fill in all spaces!

Club Name: _____

Club Address: _____ Zip Code _____

Club website: _____

Number of Members: Adults: _____ Juniors: _____ Total: _____

Months Officers are Elected: _____ Installed: _____ Take Office: _____

President: _____ Telephone: _____ Email: _____

Address: _____ Zip Code: _____

Vice President: _____ Telephone: _____ Email: _____

Address: _____ Zip Code: _____

Secretary: _____ Telephone: _____ Email: _____

Address: _____ Zip Code: _____

Treasurer: _____ Telephone: _____ Email: _____

Address: _____ Zip Code: _____

Liaison: _____ Telephone: _____ Email: _____

Address: _____ Zip Code: _____

Editor: _____ Telephone: _____ Email: _____

Address: _____ Zip Code: _____

Bulletin Name: _____

Meeting Date: _____ Time: _____ Meeting Address: _____

Show and/or Swap Date: _____ Location: _____

Do you need membership cards? Yes: _____ No: _____ Are you paying for Juniors? Yes: _____ No: _____

Please verify your check is for the correct amount (\$1.25 per voting member) and that you have completed all of the information on the form. Mail your check and one (1) copy of this form to the EFMLS Treasurer, and one (1) copy of the form to the EFMLS Directory Editor. Checks should be made payable to "EFMLS".

Lou Budell, EFMLS Treasurer, 2718 Falls Rd; Marcellus, NY 13108-9783

Carolyn Weinberger, Directory Editor, PO Box 302; Glyndon, MD 21071-0302

Signature of individual completing form: _____ Date: _____

REGIONAL VICE PRESIDENTS

Region I
Kathleen Collins
<kathleenc55@cox.net>

Region III
Hazel Remaley
<northridge@infoblvd.net>

Region V
Judy Budnik
<wisoh@msn.com>

Region VII
Betty James
<mineralid@jam.rr.com>

Region II
Michael Kessler
<quartz7228@aol.com>

Region IV
Carl Miller
<kobold1@erols.com>

Region VI
Barbara Fenstermacher
<bfenster2@bellsouth.net>

Region VIII
Currently Vacant

EFMLS COMMITTEE CHAIRPERSONS

AFMS Endowment Fund *
Joy Bourne
<csprings@epix.net>

Conservation & Legislation *
Open

Safety *
Bill Klose
<seagoatc@aol.com>
Show Coordinator
William Lema
(See Convention Advisory)

Wildacres - Continued
Matt Charsky
<Charsky.Matthew@epa.gov>

AFMS Scholarship Foundation *
Bob Livingston
<bobliv@localnet.com>

Convention Advisory
William Lema
<williamlema@cox.net>

Slide & Video Librarian *
Rick Harrison
<rlh-ss@infoblvd.net>

Director
Al DeMilo
<abdemilo@aol.com>

AFMS Ways & Means *
Open

Directory
Carolyn Weinberger (see Editor)

Supplies
Michael Kessler
(See Region II Vice President)

Registrar
Debbie Bard
<debbard@frontiernet.net>

All American Award *
Hazel Remaley
<northridge@infoblvd.net>

Each One Teach One
Nancy Millard
<nancy_koskie@msn.com>

Uniform Rules
Susanna MacInnis
<suemacdeb@aol.com>

Nominating (Elected committee)

Auction
Bruce Gaber
<bg@his.com>

Eastern Foundation Fund
Jerry Lorengo
703-293-9375

Ways & Means
Open

Cathy Gaber, Chair
<bg@his.com>

Audit
Donald Pitkin
<pitkind@earthlink.net>

Education - All American *
Hazel Remaley
<northridge@infoblvd.net>

Webmaster
Dan Imel
<lapidry@aol.com>

B. J. Bowman
(See Wildacres)

Boundaries *
Carl Miller
<kobold1@erols.com>

Historian
Susanna MacInnis
<suemacdeb@aol.com>

Wildacres Workshop Functioning Committee
Steve Weinberger, Chair
<cweinber@bcpl.net>

Harvey Brickman
<evannac@cs.com>

Budget & Finance
Fran Sick
<Fran_andEd@webtv.net>

Insurance Coordinator
Carl Miller
<kobold1@erols.com>

B. J. Bowman
<bjb@pcwan.net>

Reivan Zeleznik
<rزلapidary@yahoo.com>

Bulletin Editors Advisory *
Mary Bateman
<mbatemani@verizon.net>

Junior Activities *
Kathy Hrechka
<kkhrechka@msn.com>

Barbara Edge
<barbara.edge@gmail.com>

Bylaws
Steve Weinberger
<cweinber@bcpl.net>

Operating Procedures
Steve Weinberger
<cweinber@bcpl.net>

Bill Klose
<seagoatc@epix.net>

Karen Lewis
703-243-5823

Parliamentarian
Bruce Gaber (see Auction)

Carl Miller
<kobold1@erols.com>

Club Rockhound of the Year *
Cathy Gaber
<bg@his.com>

Public Relations *
Open

Ethel Schuele
802-863-5980

EFMLS News

Carolyn Weinberger, Editor
PO Box 302
Glyndon, MD 21071-0302



VISIT THE EFMLS WEBSITE
<www.amfed.org.efmls>

NON-PROFIT ORG.
U.S. POSTAGE
PAID
PERMIT #17
GLYNDON, MD 21071

VISIT A SHOW

from William Lema

February:

25-26: 13th Annual James Campbell Memorial Gem, Mineral & Fossil Show co-sponsored by the NY State Academy of Mineralogy and the Capital District Mineral Club. New York State Museum at Empire State Plaza, Madison Av., Albany, NY

25-26: 47th annual show sponsored by the Mississippi Gem & Mineral Society. Trade Mart Bldg, Fairgrounds at I-55 and High St; Jackson, MS.

March:

4 - 5: 43rd Annual Earth Science Gem & Mineral Show sponsored by the Delaware Mineralogical Society. Delaware Technical & Community College (I-95 Exit 4B, Churchmans Rd), Newark (Stanton), DE

17-19: 36th Annual Unifour Gem, Mineral & Jewelry Show sponsored by the Catawba Valley Gem & Mineral Club. Hickory Metro Convention Center, I-40 exit 125, Hickory, NC

18-19: 42nd Annual Gem, Mineral & Fossil Show sponsored by the Gem, Lapidary & Mineral Society of Montgomery County, MD. Montgomery County Fairgrounds, 16 Chestnut St; Gaithersburg, MD

25-26: 37th Annual Che-Hanna Rock & Mineral Show sponsored by the Che-Hanna Rock & Mineral Club. Athens Twp. Volunteer Fire Hall, 150 Herrick Av; Sayre, PA.

25: 16th Annual Rock, Mineral & Fossil Show sponsored by the Southern Maryland Rock & Mineral Club. Clearwater Nature Center, 11000 Thrift Rd., Clinton, MD

April:

Mar 30 - Apr. 2: Atlantic Micromounters Conference sponsored by the Micromineralogists of the National Capital Area. MHA Conference Center, Elkridge, MD. For registration & info, contact Steve Weinberger at <scrystals2@verizon.net>.

1 - 2: 37th Annual Gem, Mineral & Fossil Show sponsored by the NY Southern Tier Geology Club. Johnson City Senior Center, Brockton St., Johnson City, NY.

May:

13-14: 1st Annual Gem, Mineral & Fossil Show sponsored by the Connecticut Valley Mineral Club. Three County Fairgrounds, Northampton, MA

27: Chesapeake Gem & Mineral Show at Goucher sponsored by the Chesapeake Gem & Mineral Society. Goucher College, Kraushaar Pavilion, Dulaney Valley Rd., just south of I-695, Towson, MD.

September

23-24: 42nd Annual Atlantic Coast Gem, Mineral & Jewelry Show sponsored by the Gem Cutters Guild of Baltimore. Howard Co. Fairgrounds, Md Rt. 32 at I-70, West Friendship, MD.

November:

4 - 5: 37th Annual Gemarama 2006, "The World of Opals" sponsored by the Tuscarora Lapidary Society. CFS, School at Church Farm, Business Rte 30 at Rte 202, Exton, PA

18-19: Annual Gem & Mineral Show and 56th EFMLS Convention sponsored by the Gem & Mineral Society of the Palm Beaches. So. Florida Fairgrounds, West Palm Beach Florida. EFMLS Annual Meeting - November 17

If you are an EFMLS member club and would like to have your show or swap listed here, send information to William Lema, EFMLS Show Coordinator at 74 Ninth St; E. Providence, RI 02914 or e-mail <williamlema@cox.net>.