

EFMLS NEWS

Information for members of the Eastern Federation of Mineralogical & Lapidary Societies



SAFETY FIRST - FIELD HAZARDS

by Bill Klose, EFMLS Safety Chair

The renewal of spring with all its beauty and bounty, also brings out the reptiles, insects, spiders, centipedes, scorpions, and poison oaks, ivy, and sumacs.

Wood and deer ticks, which occur in thick woods or tall grasses, are associated with Rocky Mountain Spotted Fever, Lyme Disease, encephalitis



(brain inflammation), Ehrlichiosis, and Babesiosis.

The symptoms of Lyme Disease include an expanding red rash around small hard white lumps that can resemble a "bullseye", arthritis, fever, chills, aches, enlarged lymph glands, and joint swelling. Not all these symptoms may occur which makes diagnosis difficult. Several weeks to several months later, symptoms may include facial paralysis, joint inflammation, heart palpitations, memory loss/difficulty concentrating, and changes in sleep habits or mood. Early diagnosis and treatment by a doctor will produce complete recovery. There is no immunity built up to Lyme Disease after having had it, but it can't be passed from person to person. A vaccine has been developed, but may not be recommended for everyone, including the very young and the elderly. The disease is restricted to warm weather, normally April through September, in most parts of the U. S. when ticks are active. Not all ticks carry the disease. Even if you are bitten, the tick usually

be lodged in the skin for 36 to 48 hours to pass on the bacteria that causes Lyme Disease.

The best protection from tick born disease is not to allow ticks a point of entry through your clothes, the use of tick repellent in areas where ticks are known to occur, staying clear of tall grass and dense woods, and frequent inspection of you and your pets for ticks. When you find a tick, promptly and carefully remove and dispose of the tick. Do not crush the tick between your fingers which could expose you to the disease. Wash your hands after handling ticks. Make sure you remove the ticks head from the wound. The use of alcohol, a hot needle or cigarette to get a tick to back out is not effective. A good set of tweezers around the ticks head works best.



Caterpillars may have poisonous spines or hairs which can cause skin irritation, itching, redness and a raised rash. Wash well after coming in contact with a caterpillar.

Most animal bites are caused by household pets, however bites from wild animals can be especially dangerous because of the possibility of being exposed to rabies. Bites that only break the skin should be washed thoroughly with soap and water and covered with an antibiotic cream and clean bandage. If you haven't had a tetanus shot in the past 10 years, get a booster shot. A bite where the skin is badly torn or

ON THE INSIDE

WAYNE'S WORLD	2
WILDACRES	3
DIRECTORY	3
MEET THE CANDIDATES.....	4
GLOWING OPPORTUNITY	6
WILDACRES CLASSES	7
WILDACRES REGISTRATION.....	9
EFMLS CLUB SHOWS	10



It's almost Spring!!!!

there are deep punctures and is bleeding should have pressure applied to stop the bleeding and should be shown to a Doctor as soon as possible. If there are signs of infection or you suspect the animal may have rabies (displays odd behavior, is foaming at the mouth, etc.) see your Doctor immediately.

If you are in an arid region and are struck by cactus spines, pull the spines out with tweezers or fine tooth comb, being careful not to break the spines off in the skin. For fine spines, use adhesive tape or



continued on page 2

EFMLS OFFICERS 2005-2006



WAYNE SUKOW
PRESIDENT

<wsukow@earthlink.net>

FRAN SICK
1ST VICE PRESIDENT

<Fran_andEd@webtv.net>

ELLERY BOROW
2ND VICE PRESIDENT

207-547-3154

MARY BATEMAN
SECRETARY

<mbateman1@verizon.net>

LOU BUDELL
TREASURER

<labudell@dreamscape.com>

MILLIE HEYM
ASSISTANT TREASURER

<rockclub@tampabay.rr.com>

CAROLYN WEINBERGER
EDITOR

PO Box 302
GLYNDON, MD 21071-0302
410-833-7926

<cscryystals2@verizon.net>

Deadline is the first of each month prior to publication date (i.e. Feb. 1 for March issue). No issue is normally published during July or August.

WAYNE'S WORLD

by Wayne Sukow, EFMLS President

Perhaps the most rewarding part of being the EFMLS President is getting more mail. This mail is not ads for new products, not solicitations for contributions to a cause, and not complaints about Eastern. Some comes as email but it's not spam; some in brown manila envelopes, and some folded over with a piece of tape holding it. So, what is this mail? Why, it's an eclectic collection of newsletters from mineral, lapidary and geology clubs that make up the Eastern Federation.



What makes these great reading is they are filled with good news, good news of what clubs are doing and events they are planning to do. I wish I would get them all next year to hear how the planned events turned out, and say again, "Keep up the great work!" What a lot of work the editors must do to get these newsletters ready for publication each month...my hat's off to each of you. "Keep up the great work!"

Sometimes you read about the efforts needed to get volunteers for the local shows, committee chairs, or club officers. It is comforting to know you're not alone in your efforts but among friends. To those that persist, "Keep up the great work!" you set an example for those that follow.

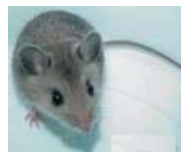
SAFETY FIRST

continued from page 1

apply a thick layer of household glue, letting it dry, then slowly peel it off, taking the attached spines with it. Apply an antiseptic to the punctures and watch for any infection that can be caused by fungus on the spines.

Valley fever is well known to fossil collectors at Shark Tooth Hill in Kern County, California, but it is also known to occur across the Southwestern U. S. to Texas and into Northern Mexico. The disease can last for years, but once recovered, a person is immune. Valley Fever cannot be transferred from person to person and no vaccine is available. Valley Fever is a highly infectious fungus which occurs in the soil and is inhaled as airborne spores into the lungs. Most cases occur during dry periods following periods of rain. It produces flu like symptoms and in rare cases, serious fever and scarring of the lung tissue. It is occasionally fatal or causes meningitis. The cure is bed rest and possibly antibiotics.

Pulmonary Syndrome Hantavirus occurs in rodent urine, feces, and saliva in the Southwestern U. S.. It is primarily carried by the deer mouse, but has also been detected in pinion and brush mice, and the Western Chipmunk. The symptoms include a high fever, backache, respiratory distress, excessive urine produc-



tion (polyuria) and abdominal pain with possible hemorrhaging of the capillaries. Recovery is in three weeks or kidney failure. Death may result from the loss of blood. Person to person transmission and transmission by insects or cats and dogs is not known to occur. Protection includes staying away from areas with heavy rodent infestation and the use of HEPA (High Efficiency Particulate Air) respirators when having to enter areas known to have the infection or heavy rodent infestation. A fairly rare disease, but with a high mortality rate, so well worth being aware of.

LAST CALL FOR MAY....STILL TIME FOR SEPTEMBER

by Steve Weinberger, WA Functioning Committee Chair

Even though this has been a rather warm winter for us here in the east, it's pretty cold outside as I write this and snow is forecast for tomorrow. That's not unexpected for March, even for temperate Maryland. Bundling up in the warm coat, gloves, hat and shoes though makes me long for the warmer weather of spring...and especially for the warmer weather that we're sure to encounter when we visit the Wildacres facility for the first of our two scheduled workshops.



September on the mountain is equally pleasant. Although sometimes warmer than May, the days are always pleasant and the nights comfortable. Yes, there is sometimes a bit of haze on the view, but it's always magnificent. Speaker *Tom Tucker* has prepared his talks carefully and included wonderful

photographs to go with them. And like the May session, you'll have a great time taking classes and being around fellow enthusiasts of the hobby.

We also will have some other activities during the week...

...we'll have an auction. Always fun and always good for many bargains, and laughs along the way.

...we'll have a good old fashioned tail-gate session where you can buy or sell your finished jewelry or cabs, minerals, fossils, equipment etc.

...we'll have short programs given by a few of our participants on a variety of fun topics.

...we'll have Show & Tell where you'll be able to talk about what you learned and made during the week and see what others have learned so you'll know what you want to do when you return next year.

...we'll have a field trip!!!!!!

...there will be a "free day" for you to go off the mountain and explore the area.

So what are you waiting for? Don't let another year of EFMLS Wildacres go by without you and your fellow club members taking advantage of this wonderful opportunity. We've included a registration form and class descriptions elsewhere in this newsletter and you can find out more on the website <www.amfed.org/efmls>. We look forward to meeting you at Wildacres this year.

The first, May 22 - 28 is almost upon us and there may still be a few slots left just waiting for your registration. At \$320 for the week we think the EFMLS Workshops are one of the best bargains around.

May at Wildacres is always wonderful. The heat of summer hasn't "hazed up" the view from the patio, and days are comfortable. We have an all-star line-up of classes for you to select from and we're sure, that whatever you take, you'll enjoy being in the company of a companionable group of folks who share your love of our fabulous hobby.

Guest speaker *Helen Serras-Herman* will enthrall you with her programs as well as her accompanying photographs.



EFMLS DIRECTORY

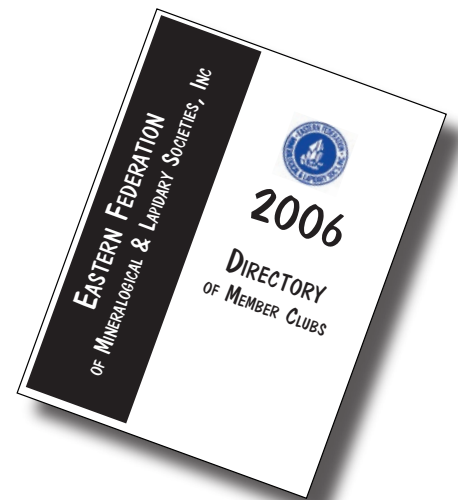
by Carolyn Weinberger

The 2006 EFMLS *Directory* is now in the hands of every club President and Editor. If your club has a separate person who acts as the Liaison between club and federation, that person received one as well. In addition each EFMLS Officer and Committee Chair also received a copy. (The mailing list for the Directory is the same as for this Newsletter).

Now the work for you begins!

Check over the entry for your club to determine if it's accurate. Check over your personal entry if you're an officer or committee chair. If you find an error, let me know immediately so that we can run corrections in future issues of the newsletter. Gremlins are often at work on a volume this large and proofreading is a difficult task when dealing with so many names, addresses, phone numbers and e-mails.

Share the *Directory* with your club!! Make a copy of the Program Library pages for your club program chair. Share the information about Wildacres, other clubs and shows with your members. Make the Directory available for your members who travel so they can find clubs or shows in the area they will visit. Communication is the key to our Success!



EDITOR'S CORNER

by Mary Bateman, BEAC Chair

The January *EFMLS Newsletter* had some good ideas on how to get your members involved writing articles/poems or doing drawings for your newsletter. Here are a few more ideas for articles:

The *EFMLS News* and the *AFMS Newsletter* are great sources for articles and go toward points in the BEAC contest. Be sure to check that permission is granted or if you need to get permission to print the item. The same rules apply as for newsletters in the next paragraph.

Each editor receives a copy of the *EFMLS Directory*. The Directory contains a listing for "Editor" under each club. Contact a couple of the editors and arrange to exchange newsletters each month. When the newsletters arrive, check them for articles, poems, drawings and hints that may be of interest to your club members. Unless specifically stated in a newsletter, most EFMLS newsletters let you use their material as long as you give credit to the author, newsletter, issue and date. If you are unsure if permission is needed, you should contact the editor. There are a lot of terrific articles being printed in our newsletters.

Newspapers and magazines are other sources for articles. **WARNING:** If you are going to copy the article in its entirety or just take excerpts from it, you **MUST** get permission of the publication or you will be in violation of the copyright laws. Again, the source or a reference need to be noted even if you paraphrase the article.

The internet is a great source for information. You need to be aware that not all internet sites are 100% accurate. You might want to check the validity of the information at several other sites. Internet material is considered copyrighted material and should be treated as

such--unless specifically stated, an article/drawing/poem/hint cannot be reprinted without permission, you need to get that permission before printing an excerpt or article. The same rules apply as for paper articles, you need to acknowledge the source and/or reference.

In the case of an internet source or reference, you should referene the title, URL (Web address), author and, if listed, the date of the source. An example for excerpts from a CNN article on Jurassic beavers might be:

Source: "Jurassic beaver' turns theory on its tail," Associated Press, February 23, 2006, CNN, <<http://www.cnn.com/2006/tech/science/02/23/jurassic.beaver.ap/index.html>>.

Ask your club members if they have any ideas for articles or what topics they would like to have covered, then ask one of them to write an article/poem/hint or do a drawing/cartoon.

Don't forget those juniors. They are a terrific source and they love seeing their efforts in print (who doesn't). Perhaps you could print a paper they have done for a school project related to the hobby.

Have you marked your calendar for the EFMLS Convention and BEAC Editors' Breakfast in West Palm Beach November 17-19? The EFMLS business meeting will be on Friday, November 17, and the show will be November 18-19. This year the convention is being sponsored by the Gem & Mineral Society of the Palm Beaches. Watch the EFMLS News for more information on the convention, but plan now to attend.



MEET THE CANDIDATES

from Cathy Gaber, Nominating Committee

The EFMLS Nominating Committee is pleased to announce it's slate of candidates to hold EF office for the fiscal year beginning November, 2006. The election will be held during the Annual Meeting in West Palm Beach, Florida on November 17.

As with all elections, further nominations may be made from the floor during the Annual Meeting. Be certain however, that the person you nominate has given permission to have his/her name put up for election.

President

Fran Sick

Che-Hanna Rock & Mineral Club

1st Vice President

Ellery Borow

Water-Oak Gem & Mineral Society

2nd Vice President

Mary Bateman

Gem, Lapidary & Mineral Society of Washington, DC

Secretary

Cathy Patterson

Gem & Mineral Society of Syracuse

Assistant Treasurer

LaReene Heath

Gem, Lapidary & Mineral Society of Washington, DC

Nominating Committee

Sue MacInnis

Pennsylvania Earth Science Assoc.

K.C. Foster

Miami Mineralogical & Lapidary Guild

A brief bio of each candidate so you'll get to know a little bit about them begins on page 5.

Cathy Gaber, Chair
B. Jay Bowman
Harvey Brickman
Carl Miller
Larry Vandergrift
Reivan Zeleznik

MEET THE CANDIDATES

continued from page 4

Fran Sick (President)



Fran can't remember when she was not fascinated by geology. Since childhood she has always wanted to know how mountains formed and where rocks, minerals and fossils came from. However, her knowledge of the hobby was limited to what she could read in books until she discovered the Che-Hanna Rock and Mineral Club. In 1996 she attended her first club show and in 1997 joined the club. In the nine years she has been a club member she has served four years as club secretary, 6 years as delegate to the EFMLS Convention and is currently in her second year as club President. She has been show and dealer chairman for two years, including 2005 when Che-Hanna hosted the EFMLS Convention.

EFMLS offices and positions held include seven years with the Each One Teach One Committee, six of those years as chairman, 2nd Vice President for six months from March to October, 2005, and she is currently 1st Vice President, having been elected to that office effective November 1, 2005.

With a lifelong love of painting and crafts, when Fran first attended Wildacres in 1998 it opened a whole new world of lapidary arts. She has been to Wildacres seven of the past nine years. She also loves field collecting but does not really have a collection. She prefers to give away the things she makes and collects, either to club or federation shows and auctions, to children or as gifts to friends.

But the best part of being a mem-

ber of the EFMLS and Che-Hanna Rock and Mineral Club is the people. They are the friendliest and most helpful in the world. They know how to get the job done and always have fun in the process. Fran feels it is a privilege to belong to this wonderful organization and she has loved every minute of it.

Ellery Borow (1st Vice President)

Ellery loves life and loves the hobby. His enthusiasm and drive are serving him well as a club member and as a federation officer. He is President, Editor, Program Chair and Show Chair of the Water-Oak Gem and Mineral Society in Waterville, Maine, where he has worked for many years with Regional VP and former 2nd VP, the late Bill Longley. He is the Secretary for the Maine Mineral Symposium and is also active in four mineral clubs in Maine and two in Connecticut. For 19 years, he has been enjoying gem and mineral shows throughout New England and has been coming to the EFMLS convention, often as a delegate, for 12 years.

Some of his many interests include: lapidary, rock and mineral collecting, mineral identification, gold panning, micromounting, mineral photography, silver and goldsmithing, and fluorescent minerals. He is also a ham radio operator and enjoys outdoor activities. Art work, like wood carving, marquetry, painting, scrimshaw, writing, calligraphy and glass engraving, are other pursuits. His good sense of humor should serve him well as a federation officer.

Cathy Patterson (Secretary)

Cathy Patterson currently lives in Baldwinsville, a small suburb to the north of Syracuse (with aspirations of moving south!), New York. She devotes much of her retired, free time to the Gem & Mineral Society of Syracuse, but she is also active in a ballroom dance

group. Her club has hosted EFMLS and AFMS conventions during their big summer show at the state fairgrounds. Her husband Loren and she have been running the club booth at the show for years, and she is now branching outward to work in other capacities to "get the show on the road", so to speak. She enjoys learning every facet of the club's workings and has especially enjoyed serving as secretary for the club these past 2 years. The new beading group, an offshoot of the club, she helped co-create with an accomplished fellow beader over a year ago, and they are proud to say they are growing in numbers and are meeting outside of regular meetings for workshops. Cathy serves on a number of club committees including: membership, hospitality, library, publicity, show committee, and she helps with the editing of the award winning newsletter, the Crack 'N Cab. Cathy Patterson is almost a 20 year member of Gem & Mineral Society of Syracuse and is excited about achieving life member status next year.

Mary Bateman

Mary Bateman has been interested in rocks and gems her entire life, but a chance rock collecting trip in Maine really got her hooked on the hobby. In the later 1980's Mary joined the Gem, Lapidary and Mineral Society of Washington, DC (GLMS/DC). She has served GLMS/DC as the editor of its newsletter, The Dopstick, and has contributed many articles over the years. Mary is a member of a select group of editors who have received the Wildacres Scholarship Award for Editors. For the past three years, she has been the President of GLMS/DC. Her money-saving ideas won her the Society's highest award—a Lifetime Membership. In addition to her activities in GLMS/DC, she is also a member of the Mineralogical Society of the District of Columbia. Mary is active in EFMLS serving for

continued on page 6

MEET THE CANDIDATES

continued from page 5

several years as the Bulletin Editors Advisory Committee chair and the past two years as Secretary. She has been both a director and delegate to the EFMLS conventions.

In addition to her club and EFMLS activities, Mary has a full-time position with The Bond Market Association in their Washington, DC government affairs office where she is a member of the research and policy staff.

LaReene Heath (Asst. Treasurer)

LaReene Heath, a resident of Mercerville, NJ, enjoys minerals and gemstones and loves going to gem and mineral shows. She has been a member of the Gem, Lapidary and Mineral Society of Washington, DC for several years. LaReene has been a willing helper at the EFMLS conventions including having helped sell raffle tickets at the Syracuse Show. She has been an active participant in the Bulletin Editors Advisory Committee contest as a judge of juvenile entries and drawn features. She has also helped behind the scenes in organizing for the Editors Breakfast and helping to give out awards. LaReene is the head teller of the Sovereign Bank in Pennington, NJ, and has received the bank's highest "Red Carpet Award" for excellence in customer service, supported by many letters from the customers. Her branch received several awards last year for achieving almost impossible goals with her help. LaReene has served several years as treasurer of her church. She delights in babysitting and spoiling her granddaughter and grandson.

Sue MacInnis (Nominating Committee)

Sue is an active member of the Pennsylvania Earth Sciences Association. She's held most offices and edited the club newsletter for many years. Currently the chairperson for the EFMLS Uniform Rules Committee, Sue has been an Eastern Certified

Judge (minerals) for many years and, prior to becoming Chair, was a member of the URC. She has also served as the EFMLS Historian, assisting with the research and writing for the 50 year Anniversary Booklet in 1950.

Sue's interests include collecting minerals ranging in size from micro-mount to cabinet size and she's won several competitive exhibits for her displays of self-collected specimens. She's a frequent Wildacres Workshop attendee and loves to sing. She's also a member of the Che-Hanna Rock & Mineral Club.

KC Foster (Nominating Committee)

As the editor of the *Geode*, newsletter of the Miami Mineralogical and Lapidary Guild (MMLG) for about 12 years, KC became well acquainted with all the needs of the club. A member since about 1979, she has volunteered extensively in this club, as president for 3 years, and as teaching and classroom coordinator for cabbing, wire wrapping, faceting and mineral study. She also served on the board and coordinated shows at the Museum of Science. As a member of the West Palm Beach Club, she has served as the shop steward, taught faceting and has just volunteered to be the exhibits chair for the EFMLS show to be hosted by the club this November. When KC lived for a bit in the Washington, DC area, she was a member of the Northern Virginia Mineral Club and the Micromineralogists of the National Capital Area, which she served as secretary. KC holds a BS in Geology (1978) from the University of Miami and was certified as a Graduate Gemologist by the Gemological Institute of America in 1988. She worked in the jewelry industry for many years doing appraisals and sales. If the opportunities had been available, she would have loved to work in a quarry or on an oil rig. She is also quite an experienced pool player.

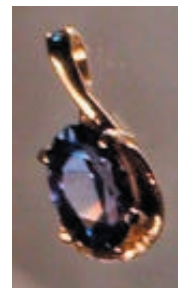
WANNA WIN SOMETHING?

by Carolyn Weinberger

Many of the slide and video programs in our Eastern Federation library have been gifts to us from the AFMS Endowment Fund. The annual AFMS Judging Seminar held at Wildacres in conjunction with our EFMLS workshops are made possible by the AFMS Endowment Fund. From these seminars, members of our federation and all the others receive training to help them be better evaluators of displays at our shows.

One of the major means of adding capital to the invested monies is the annual AFMS Endowment Fund raffle. Over the years there have been some absolutely fantastic prizes and this year is no exception. You can see them all by visiting the AFMS website <www.amfed.org/endow2006.htm>.

One of the donated items up for grabs this year is a Tanzanite pendant faceted by EFMLS Past President and master faceter, Reivan Zeleznik. It weighs 1.38 carats and is set in a 14k gold pendant. The conservative estimated value is \$500.



You could be the proud owner of this pendant or one of the other fabulous prizes IF you hold a winning ticket when the drawing is made this August during the AFMS Convention in Nashville, TN. Tickets are \$5 each or 5 for \$20. All prizes have been donated and all proceeds go to the AFMS Endowment Fund for investment. Remember that only the interest from these investments is used for educational purposes that ultimately benefit your club. Tickets can be purchased from Joy Bourne (RR#1, Box 159A; Towanda, PA. 18848. Checks should be made payable to "AFMS Endowment Fund".) Please include a stamped, self-addressed envelope with your request.

WILDACRES CLASS OFFERINGS

from Al DeMilo, Director

Here is the listing of classes we currently plan to offer at the two EFMLS Wildacres Workshops for 2006. When you send in your application form, be sure to specify your class preference. We will make every effort to honor your 1st or 2nd choice, but should a class be filled, we need to know your other preferences. An application form is included elsewhere in this newsletter.

SPRING SESSION - MAY 22 - 28, 2006

CLASS	INSTRUCTOR	DESCRIPTION
Faceting	Reivan Zeleznik	You CAN do it! The mystery of faceting is out the window! Like hundreds of other "never before" faceters Reivan has worked with at Wildacres, you will take home a gem you've created with your own two hands. And it will be better in quality than 90% of the gems (other than diamonds) in your local jewelry store. Spend a week with Reivan and enjoy unlocking your untapped talent. 4 day class.
Cabochons	Bernie Emery	Hands on instruction will be given to show how to transform a rough piece of rock into a shiny well formed cabochon. The use of a trim saw as well as techniques to grind, sand and polish the stone into a standard size and shape will be covered. Slabs will be provided, but you may use your own with instructor's approval. 2 day class offered both semesters.
Exhibiting & Judging	B. Jay Bowman	Return to the roots of EFMLS Wildacres by participating in the Exhibiting & Judging class with the inimitable Jay Bowman. There will be four days of discussion moderated by Jay along with real judging -experience questions that participants have had or have heard about. Discussions are spirited and this is complemented by some practice judging of exhibits prepared by Wildacres participants...often with a deliberate flaw to keep you on your toes and alert. Then hear the debriefing...what an experience! 4 day class.
Silversmithing - Basic	Richard Zollweg	Students will learn basic skills to make jewelry. Among the techniques taught are sawing, filing, soldering, bending and polishing. 2 day class. 1 st Semester
Silversmithing - Intermediate	Richard Zollweg	Students will use basic silversmithing skills, learn new ones and create more advanced jewelry items. Prerequisite: soldering, filing, basic silversmithing skills. 2 day class. 2 nd semester
Pewter Fabrication	Bruce Gaber	Learn to make functional and decorative objects from a wonderfully versatile metal. Pewter is easy to work and easy to solder. This allows one to make a variety of forms in a much shorter time than working in silver. Pewter can be finished in everything from a glossy, high luster to a deep rich matte. The surface can be further embellished by embossing and the addition of an etch or patina. Join Bruce to explore this most ancient and traditional material. Oh, and by the way, modern pewter contains no lead. 4 day class
Micromounting	Carolyn Weinberger	Micromounting is the art of preparing small mineral specimens so they can best be viewed under a microscope. You will learn how to trim off excess material, mount your specimen on a pedestal and then a small box. 2 day class offered both semesters or can be taken as a 4 day class
Beadcraft - Basic	Mia Schulman	Learn how to form knots between beads (essential for pearls and attractive for other beads) and how to finish necklaces using a variety of clasps. We will also work with wire and beads to form "flower" pendants. Time permitting, the "netting" stitch will be taught which is useful in making chokers, necklaces and decorating Christmas balls. Wear what you finish for your trip home. 2 day class. 1 st semester.
Bead Weaving	Mia Schulman	We'll create a pin (or pendant) using the Peyote stitch which can be used to fabricate amulet bags, necklaces, bracelets and even pictures. Equally important, you will be able to "read" and even design your own pattern. If time permits we will learn the Square stitch which is very useful for bracelets or work on a spiral rope necklace. 2 day class. 2 nd semester.
Wirecrafting - basic	Lisa Roberts	Learn the basics of twisting gold-filled and sterling silver wire to create wonderful wire-wrapped jewelry. 2 day class. 1 st semester.
Wire Sculpture	Lisa Roberts	More advanced projects utilizing skills learned in the basic class. Prerequisite: Basic wirecrafting skills. 2 day class. 2 nd semester.
Fused Glass - Basic 1	Becky Edmundson	Expect to have fun while you learn something new! Fused glass is the art of cutting and layering pieces of glass and then firing them in a kiln. Dichroic-coated glass gives a 3-D look. Students will learn the basics of cutting and firing the glass and will complete at least 2 pieces of jewelry. Please bring safety glasses. If you own them, please bring a glass cutter and breaking pliers. Prerequisites: none. 2-day class offered 1st semester.
Fused Glass - Basic 2	Becky Edmundson	This course can be taken without having taken the Basic 1 course. Students will learn to use a wet saw to cut shapes, a grinder to smooth the glass and a jeweler's bit to cut a channel in the piece before it is fire polished in a kiln. You should expect to complete a minimum of 2 finished pieces. Please bring safety glasses. If you own them, please bring a glass cutter and breaking pliers. Prerequisites: none. 2-day class offered 2nd semester.

WILDACRES CLASS OFFERINGS

continued

FALL SESSION - SEPTEMBER 11 - 17, 2006

CLASS	INSTRUCTOR	DESCRIPTION
Faceting	Steve Weinberger	You CAN do it! the mystery of faceting is out the window! Like hundreds of other "never before" faceters Steve has worked with at Wildacres, you will take home a gem you've created with your own two hands. And it will be better in quality than 90% of the gems (other than diamonds) in your local jewelry store. Spend a week with Reivan and enjoy unlocking your untapped talent. 4 day class.
Cabochons	Derek Levin	Hands on instruction will be given to show how to transform a rough piece of rock into a shiny well formed cabochon. The use of a trim saw as well as techniques to grind, sand and polish the stone into a standard size and shape will be covered. Slabs will be provided, but you may use your own with instructor's approval. 2 day class offered 1st Semester.
Opal Cutting - Basic	Derek Levin	Instruction will be given in bringing out the best in color and beauty from a piece of rough precious opal. The goal of the class is to explore how an opal can be best cut to create a finished stone suitable for setting in a piece of jewelry and cutting that stone. Emphasis will be placed on reading the stone and performing the most effective cutting procedures for the individual stone. You are encouraged to bring your own rough opal or rough will be available for purchase from the instructor. You are required to bring safety goggles and also magnifying glasses to best examine and cut the stone. Bring a plastic apron if you want to stay clean. 2 day class.
Exhibiting & Judging	B. Jay Bowman	Return to the roots of EFMLS Wildacres by participating in the Exhibiting & Judging class with the inimitable Jay Bowman. there will be four days of discussion moderated by Jay along with real judging -experience questions that participants have had or have heard about. Discussions are spirited and this is complemented by some practice judging of exhibits prepared by Wildacres participants...often with a deliberate flaw to keep you on your toes and alert. Then hear the debriefing...what an experience! 4 day class.
Silversmithing - Basic	Richard Meszler	Students will complete several projects geared to teaching and learning the basics of silversmithing - annealing, bending metal, soldering, piercing and polishing. 2 day class. 1 st semester.
Silversmithing - Intermediate	Richard Meszler	Students will use skills learned in the basic class to complete a bezel set cabochon pin/pendant. Prerequisite: soldering, filing, basic silversmithing skills. 2 day class. 2 nd semester.
Silversmithing/Forging/ Fold Forming	Richard Zollweg	Students will fabricate items using hammers and stakes. Then, they will learn how to texture and polish the items to make lovely jewelry. Minimal soldering is required. 2 day class offered both semesters.
Micromounting	Carolyn Weinberger	Micromounting is the art of preparing small mineral specimens so they can best be viewed under a microscope. You will learn how to trim off excess material, mount your specimen on a pedestal and then a small box. 2 day class offered both semesters or can be taken as a 4 day class
Introduction to Precious Metal Clay (PMC)	Cathy Gaber	Precious Metal Clay is fine silver embedded in a clay. The clay is shaped into various forms, then fired in a kiln causing the clay binder to burn off leaving only the silver. You'll learn how to use the material as you make a variety of small objects. 2 day class. 1 st semester
Beaded Bezels	Cathy Gaber	Cabochons do not always have to be set in metal. Learn to make unusual bezels for cabochons using beads of all kinds. It's a great way to exercise your creativity. The sewing technique is suitable for making pins, bolas, earrings, and other types of jewelry. All work will be fully finished with a leather backing and an appropriate finding. Bring your own cabochons of any shape, size or color or contact the instructor in advance to purchase cabochons. 2 day class. 2 nd semester.
Wirecrafting - basic	Lisa Roberts	Learn the basics of twisting gold-filled and sterling silver wire to create wonderful wire-wrapped jewelry. 2 day class. 1 st semester.
Wire Sculpture	Lisa Roberts	More advanced projects utilizing skills learned in the basic class. Prerequisite: Basic wirecrafting skills. 2 day class. 2 nd semester.
Soapstone Carving	Inga Wells	Learn how to create small carvings from a soft material. Minimal tools are used to achieve lovely results. Let the object hidden in the stone come alive under your hand. 2 day class offered both semesters.

2006 EFMLS Wildacres Registration

PLEASE, ONLY one person per form per session

CHECK ONE: May 22 - 28 _____ September 11 - 17 _____

Please fill out a separate registration form for each person attending and return to DEBBIE BARD, Registrar at 8085 Old 126, Warfordsburg, PA 17267. No registration will be accepted prior to January 1, 2006. (To make it easier for the registrar and others, please do not change or revise this form. You may photocopy it as needed.)

Name (as you wish it to appear on your name badge): _____

Street: _____ City: _____ State: _____ Zip: _____

Telephone number with area code: _____ e-mail: _____

Club/Society Affiliation: _____

Fee for each session is \$320.00 per person. Deposit is \$160 per person, payable with registration. Make checks payable to "EFMLS". Balance of \$160 is due 30 days prior to start of session.

Cancellation policy: If unable to attend, fees paid will be refunded if notification is given prior to one month before the session begins. No refund will be made after that date.

Circle appropriate responses:

Have you been to Wildacres before? Yes No Is your Club sponsoring you? Yes No

Name of roommate: _____ (If none, one will be assigned).
Are you: Male Female (No single rooms are available). Are you a smoker? Yes No

Do you have any physical handicaps and / or special dietary needs? Yes No
If YES, please explain on reverse side.

Do you have material for exhibiting that you would be willing to display at Wildacres? Yes No
If YES, please contact Steve Weinberger <cscrystals2@verizon.net> . Lined display cases are available.

Do you have a skill to demonstrate or a program to share (up to 40 minutes)? Yes No
If YES, please contact Cathy Gaber at <bg@his.com>, or 301-654-7479.

Class Pre-registration.

See EFMLS Newsletter or Website for class offerings. <www.amfed.org/efmls/wildacres.htm>

Which of the classes being offered would you like to take? We will be preregistering you for classes you indicate. When a class is full NO others will be assigned to that class, and you will be assigned your next class choice(s). No class placement is guaranteed.

1st _____

3rd _____

2nd _____

4th _____

(No registrations accepted prior to January 1, 2006)

Mail to: Debbie Bard, Wildacres Registrar
8085 Old 126
Warfordsburg, PA 17267

If you have any questions, please contact either Debbie Bard, Registrar at <debbard@frontiernet.net> or 717-294-3667 or Al DeMilo, Director at <abdemilo@aol.com> or 301-262-6014.

EFMLS NEWS

Carolyn Weinberger, Editor
PO Box 302



VISIT THE EFMLS WEBSITE
<www.amfed.org.efmls>

NON-PROFIT ORG.
U.S. POSTAGE
PAID

VISIT A SHOW

from William Lema

March 2006

25-26: 37th Annual Che-Hanna Rock & Mineral Show sponsored by the Che-Hanna Rock & Mineral Club. Athens Twp. Volunteer Fire Hall, 150 Herrick Av; Sayre, PA.

25: 16th Annual Rock, Mineral & Fossil Show sponsored by the Southern Maryland Rock & Mineral Club. Clearwater Nature Center, 11000 Thrift Rd., Clinton, MD

April:

Mar 30 - Apr. 2: Atlantic Micromounters Conference sponsored by the Micromineralogists of the National Capital Area. MHA Conference Center, Elkridge, MD. For registration & info, contact Steve Weinberger at <scrystals2@verizon.net>.

1 - 2: 37th Annual Gem, Mineral & Fossil Show sponsored by the NY Southern Tier Geology Club. Johnson City Senior Center, Brockton St., Johnson City, NY.

1 - 2: Annual show sponsored by the Philadelphia Mineralogical Society and the Delaware Valley Paleontological Society. Lulu Temple, 5140 Butler Pike, Plymouth Meeting, PA.

1 - 2: 38th Annual Gem, Mineral & Fossil Show sponsored by the Buffalo Geological Society. Fairgrounds, Hamburg, NY.

8-9: 23rd Annual Gem & Mineral Show sponsored by the Maine Mineralogical & Geological Society. Finley Gym, Univ. of New England, 716 Stevens Av; Portland, ME

May:

6 - 7: Annual Show & Sale sponsored by the Fulton County Mineral Club. Johnstown Moose Lodge, Rte 30A; Johnstown, NY.

6 - 7: 43rd Annual New England Gem & Mineral Show sponsored by the North Shore Rock & Mineral Club. Topsfield Fairgrounds, Route 1 North, Topsfield, MA.

13-14: 1st Annual Gem, Mineral & Fossil Show sponsored by the Connecticut Valley Mineral Club. Three County Fairgrounds,, Northampton, MA

20-21: 38th Annual World of Gems & Minerals sponsored by the Berks Mineralogical Society. Leesport Farmers Market Banquet Hall, Rte 61, Leesport, PA (6 miles north of Reading, PA).

20-21: Annual Mineral, Gem, Fossil Swap & Sell sponsored by the Orange Co. Mineral Society. Museum Village Green, Monroe, NY

27: Chesapeake Gem & Mineral Show at Goucher sponsored by the Chesapeake Gem & Mineral Society. Goucher College, Kraushaar Pavilion, Dulaney Valley Rd., just south of I-695, Towson, MD.

June:

3: Spring Mineralfest hosted by the Pennsylvania Earth Sciences Association. Maccungie Memorial Park, 8 miles southwest of Allentown, PA.

10: 4th Annual Rock Swap and Sale sponsored by the Connecticut Antique Machinery Association & the Danbury Mineralogical Society. Connecticut Antique Machinery Association, Rt 7, Kent, CT. Sale to benefit the Conn. Museum of Mining & Mineral Science. (Rain date June 11)

July:

8-9: 40th Annual Jewelry, Mineral, Fossil Show and Sale sponsored by the Gem & Mineral Society of Syracuse. Verizon Center of Progress Bldg., State Fairgrounds, Syracuse, NY.

15-16: 37th Annual Gem & Mineral Show sponsored by the Gem City Rock & Mineral Club. Perry Hi-way Hose Co., 8270 Peach St; Erie, PA.

August:

5-6: 57th Annual Gem Show sponsored by The Gem, Lapidary and Mineral Society of Washington, D.C. NEW LOCATION: Stone Ridge School of the Sacred Heart, 9101 Rockville Pike (corner of Rockville Pike and Cedar Lane) Bethesda, MD.

5-6: 36th Annual Mid-State Gem & Mineral Show sponsored by the Water-Oak Gem & Mineral Society. Mout Merici School, 152 Western Av; Waterville, ME

November

18-19: Annual Gem & Mineral Show and 56th EFMLS Convention sponsored by the Gem & Mineral Society of the Palm Beaches. So. Florida Fairgrounds, West Palm Beach Florida. EFMLS Annual Meeting - November 17

If you are an EFMLS member club and would like to have your show or swap listed here, send information to William Lema, EFMLS Show Coordinator at 74 Ninth St; E. Providence, RI 02914 or e-mail <williamlema@cox.net>.